

**Notes:**

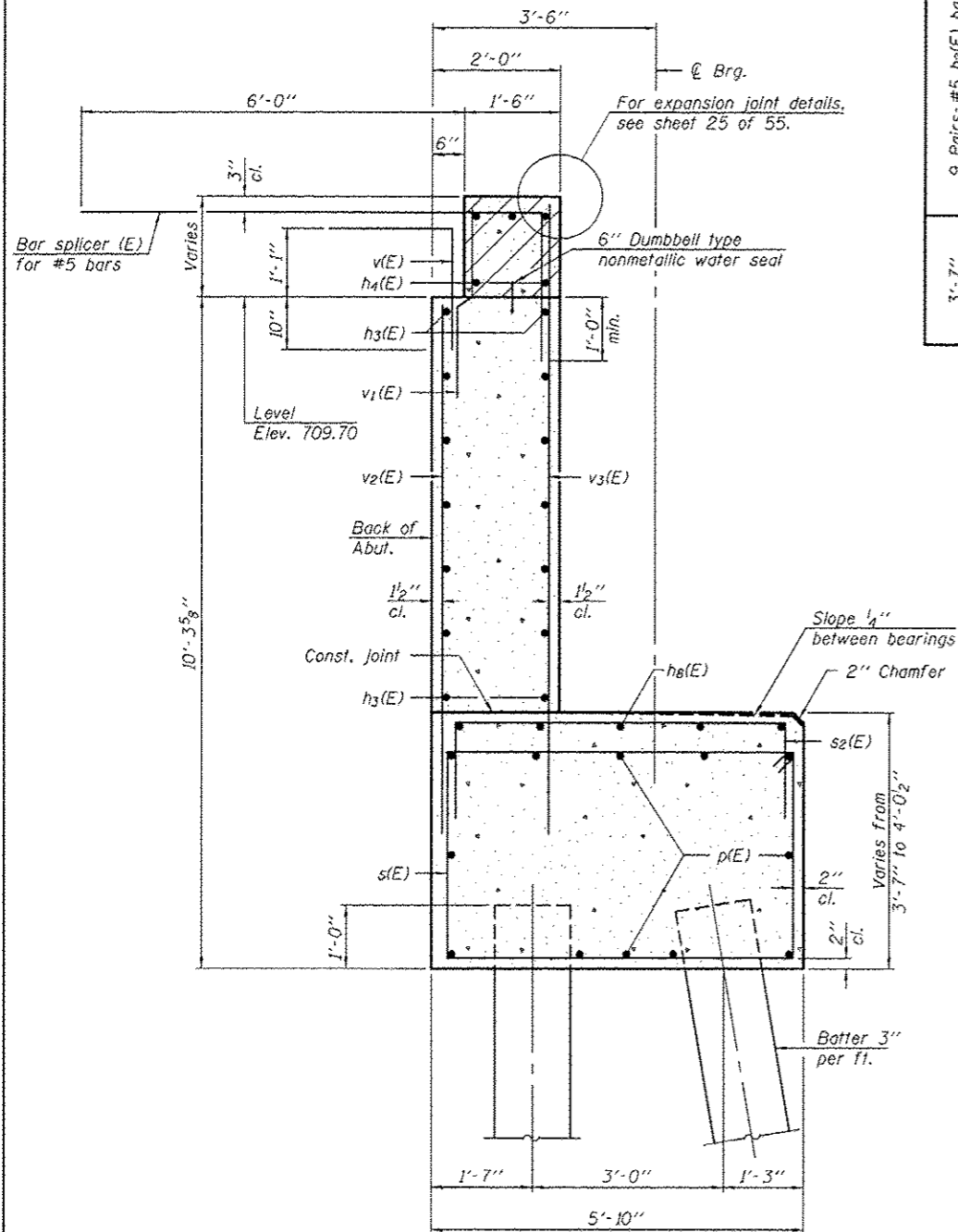
Hatched area to be poured after superstructure false work has been removed. Quantity of concrete included with Concrete Superstructure.

Space reinforcement in cap to miss anchor bolts. Pour steps monolithically with cap.

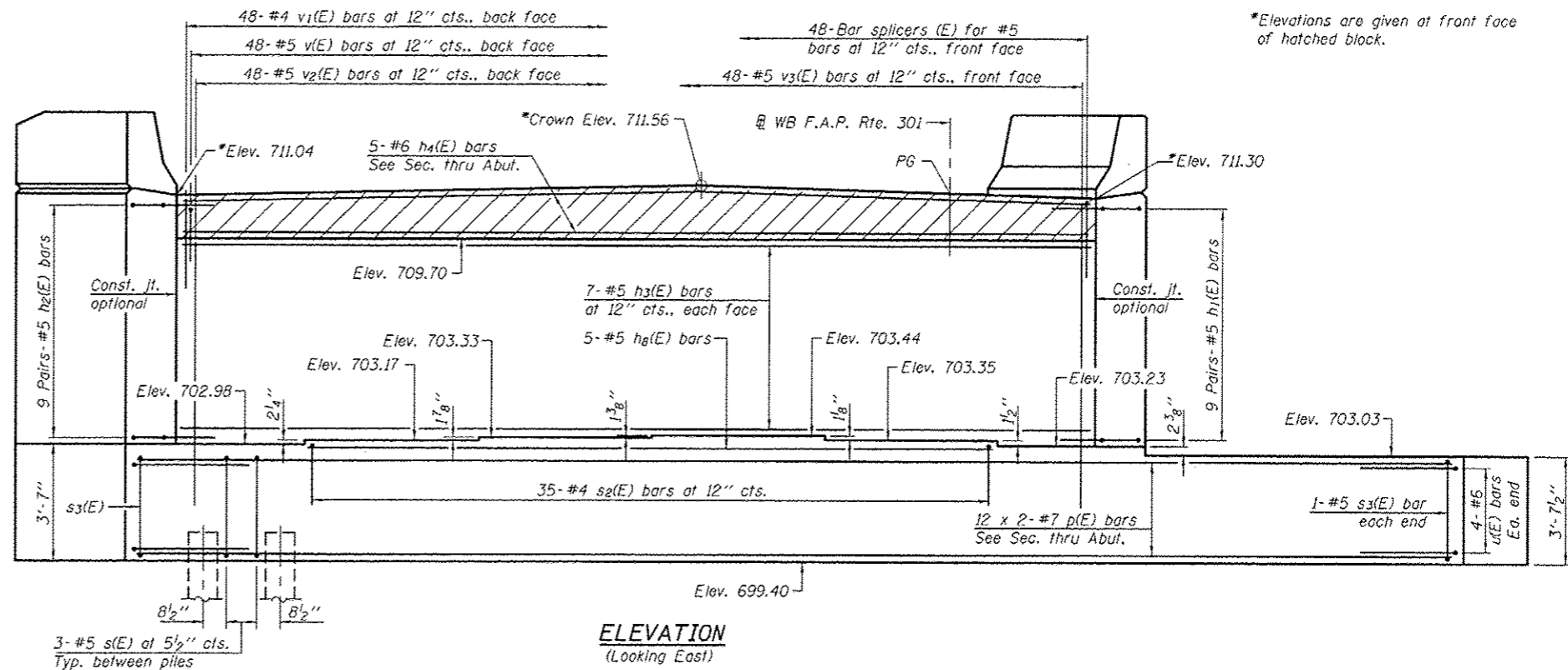
Quantity of concrete in end post included with Concrete Superstructure on sheet 20 of 55.

See sheet 46 of 55 for additional form liner details. Form Liner shall be placed on outside face of wingwalls as shown in the Wingwall Elevation shown below.

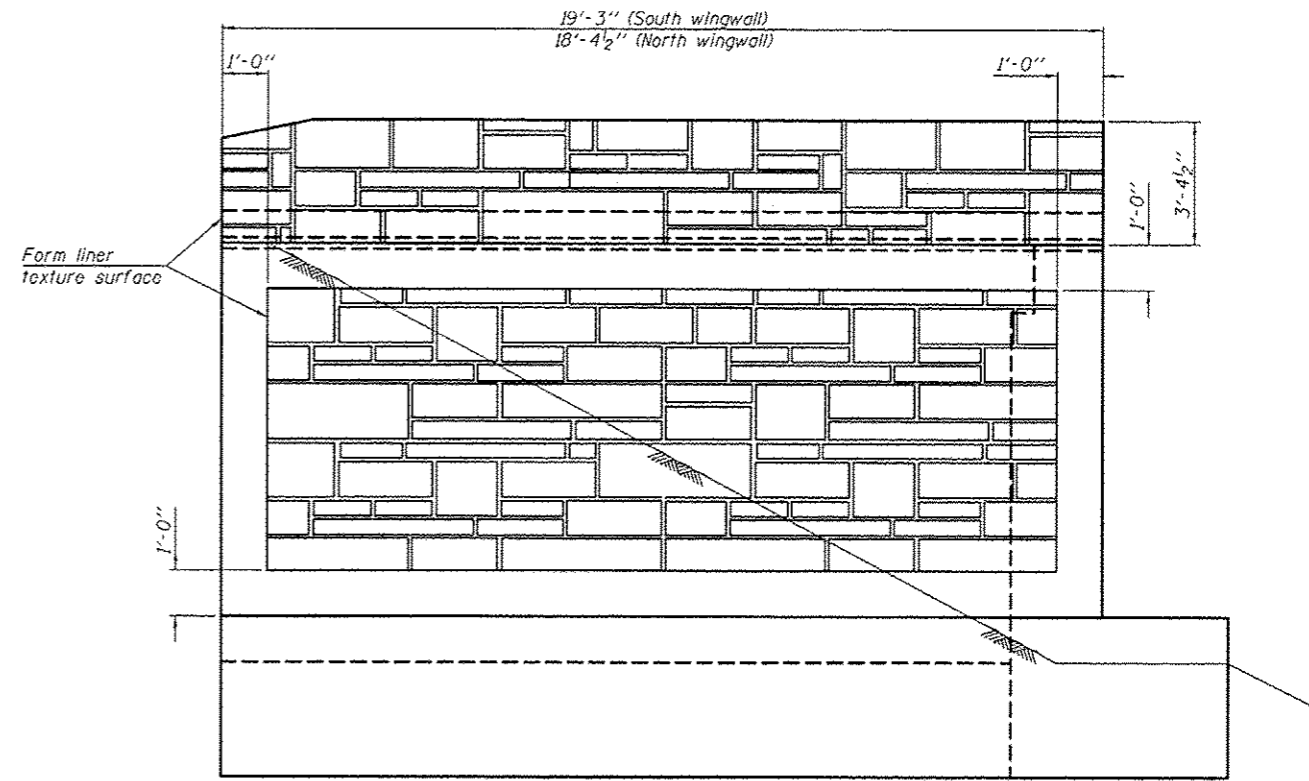
For bar splicer details, see sheet 49 of 55.



**SECTION THRU EAST ABUTMENT**



**ELEVATION (Looking East)**



**WINGWALL ELEVATION (North wingwall shown, South wingwall similar).**

**MIN. BAR LAP**  
#7 bar = 5'-2"

|                                |   |
|--------------------------------|---|
| DESIGNED - NICHOLAS R. BARNETT | EXAMINED - <i>James F. [Signature]</i>    |
| CHECKED - AL-BARRAE R. SHEBIB  | ACTING ENGINEER OF BRIDGE DESIGN          |
| DRAWN - H.T. DUONG / M.B.M.    | PASSED - <i>[Signature]</i>               |
| CHECKED - NRB/GRA              | ACTING ENGINEER OF BRIDGES AND STRUCTURES |

|                        |
|------------------------|
| DATE - OCTOBER 4, 2013 |
| REVISED                |
| REVISED                |

**STATE OF ILLINOIS DEPARTMENT OF TRANSPORTATION**

**EAST ABUTMENT (W.B.) - STAGE II CONSTRUCTION**  
**STRUCTURE NO. 101-0195 (E.B.) & 101-0196 (W.B.)**

|                             |                     |                  |                  |                    |
|-----------------------------|---------------------|------------------|------------------|--------------------|
| F.A.P. RTE. 301             | SECTION 3BR & 3BR-1 | COUNTY WINNEBAGO | TOTAL SHEETS 290 | SHEET NO. 140      |
| SHEET NO. 41 OF 55 SHEETS   |                     |                  |                  | CONTRACT NO. 64D19 |
| [ILLINOIS] FED. AID PROJECT |                     |                  |                  |                    |