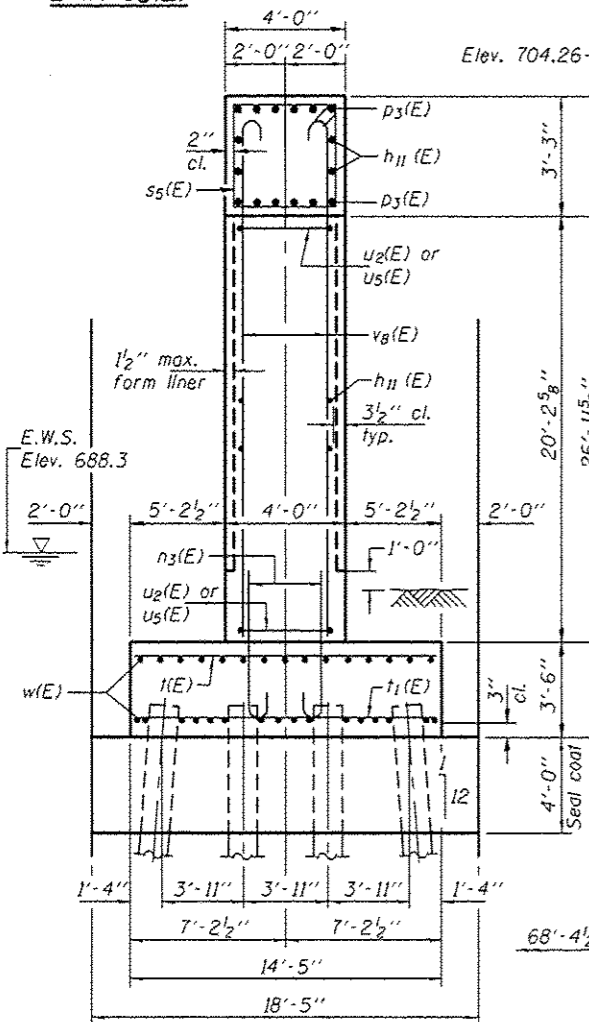
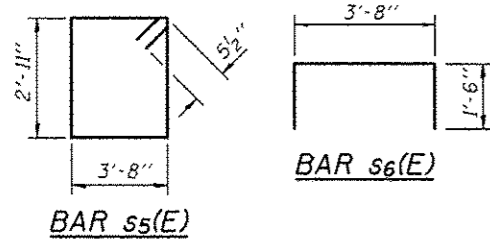


Notes:
 Space reinforcement in cap to miss anchor bolts.
 Pour steps monolithically with cap.
 For details of piles, see sheet 48 of 55.



END VIEW

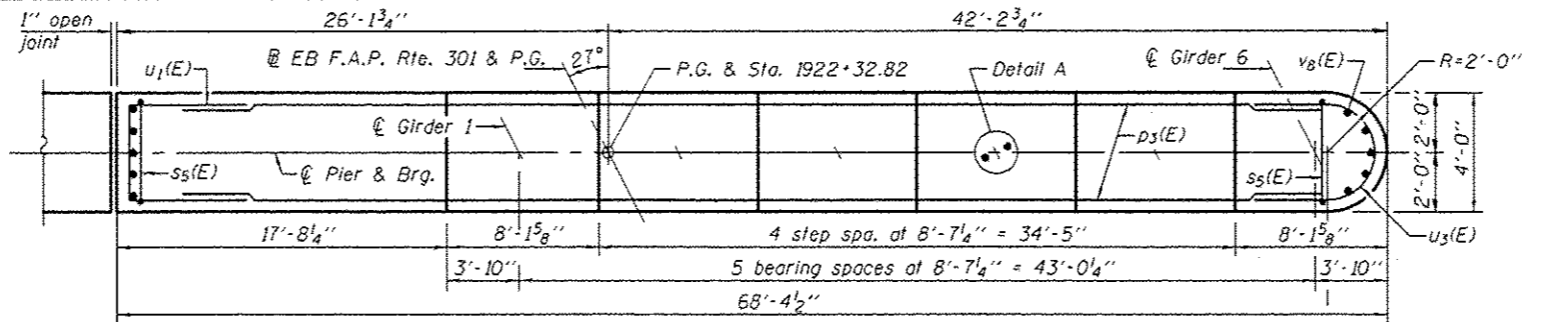
PILE DATA

Type: Metal Shell Piles 14"x .312" with Pile Shoes
 Nominal Required Bearing: 284 Kips
 Factored Resistance Available: 154 Kips
 Est. Length: 33'
 No. Production Piles: 71
 No. Test Piles: 1

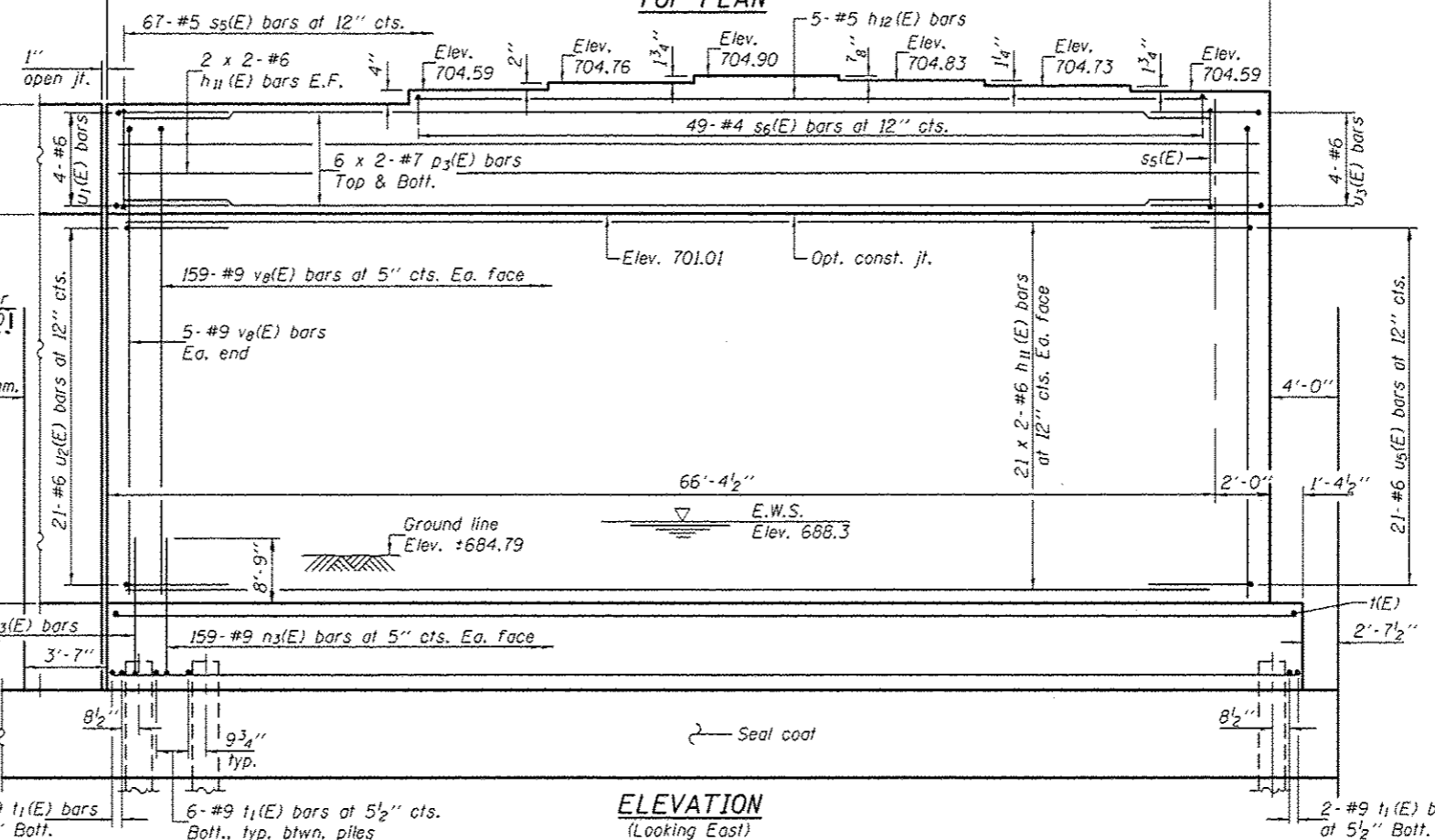
MIN. BAR LAP

#6 bar = 3'-10"
 #7 bar = 5'-2"

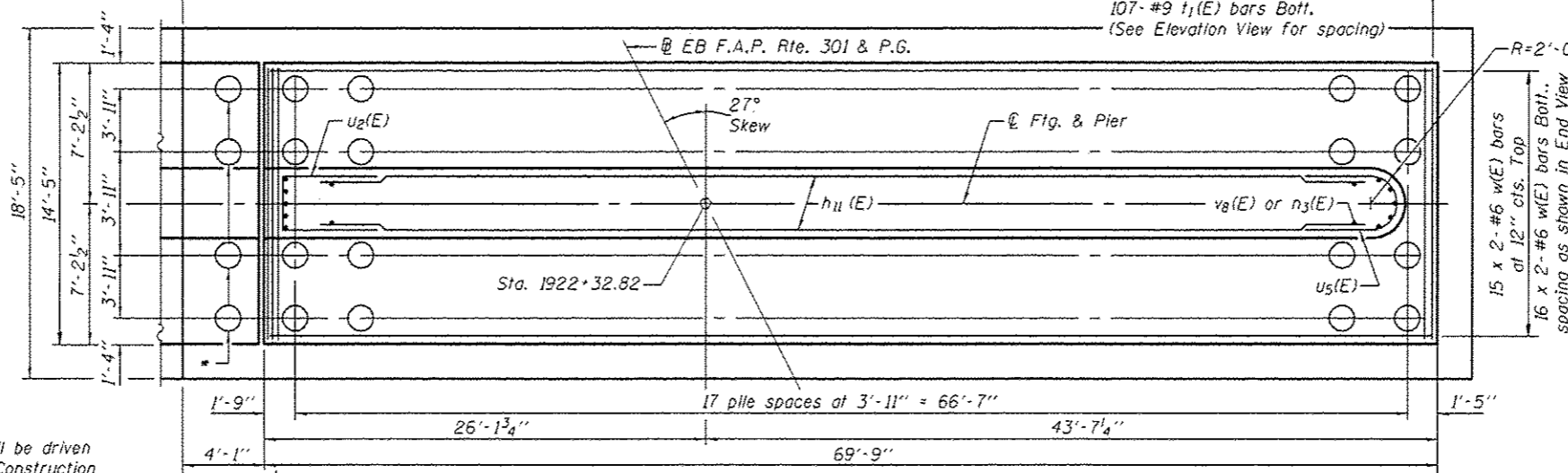
*These piles shall be driven during Stage I Construction to avoid conflict during Stage II Construction.



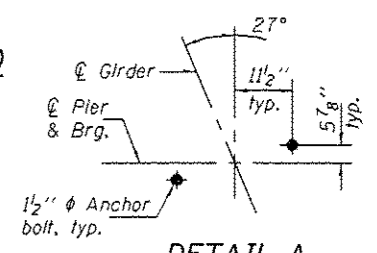
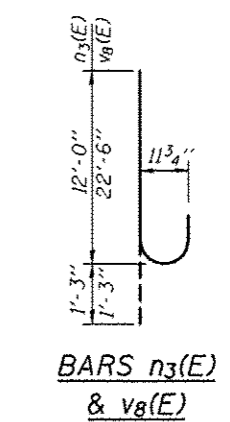
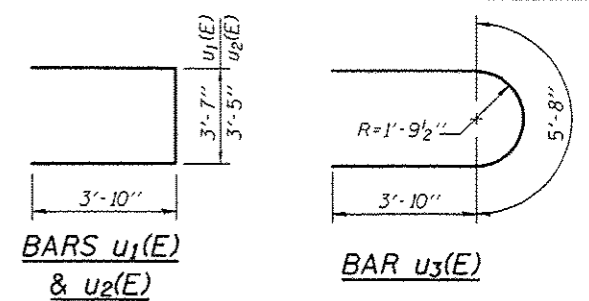
TOP PLAN



ELEVATION
(Looking East)



FOOTING PLAN



BILL OF MATERIAL

Bar	No.	Size	Length	Shape
h11(E)	92	#6	35'-1"	—
h12(E)	5	#5	48'-6"	—
n3(E)	328	#9	13'-3"	U
p3(E)	24	#7	35'-9"	—
ss(E)	67	#5	14'-1"	□
s6(E)	49	#4	6'-8"	□
i1(E)	84	#8	14'-1"	—
i2(E)	107	#9	14'-1"	—
u1(E)	4	#6	11'-3"	U
u2(E)	21	#6	11'-1"	U
u3(E)	4	#6	13'-4"	U
u5(E)	21	#6	13'-0"	U
v8(E)	328	#9	23'-9"	U
w(E)	62	#6	36'-8"	—
Cofferdam Excavation		Cu. Yd.	600	
Concrete Structures		Cu. Yd.	370.2	
Reinforcement Bars, Epoxy Coated		Pound	61920	
Furnishing Metal Shell Piles 14"x .312"		Foot	2343	
Driving Piles		Foot	2343	
Test Pile, Metal Shells		Each	1	
Pile Shoes		Each	72	
Cofferdam (Type 2), Location 1		Each	0.5	
Anchor Bolts 1/2"		Each	12	
Seal Coat Concrete		Cu. Yd.	208.6	

DESIGNED - Nick R. Barnett
 CHECKED - Al-Barrae R. Shebib
 DRAWN - h.f. duong
 CHECKED - NRB/CRA

EXAMINED
 PASSED
 ACTING ENGINEER OF BRIDGE DESIGN
 ACTING ENGINEER OF BRIDGES AND STRUCTURES

DATE - OCTOBER 4, 2013
 REVISED 10/21/2013 NRB
 REVISED

STATE OF ILLINOIS
 DEPARTMENT OF TRANSPORTATION

PIER (E.B.) - STAGE I CONSTRUCTION
 STRUCTURE NO. 101-0195 (E.B.) & 101-0196 (W.B.)
 SHEET NO. 43 OF 55 SHEETS

F.A.P. RTE. 301
 SECTION 3BR & 3BR-1
 COUNTY WINNEBAGO
 TOTAL SHEETS 290
 SHEET NO. 142
 CONTRACT NO. 64D19
 ILLINOIS FED. AID PROJECT