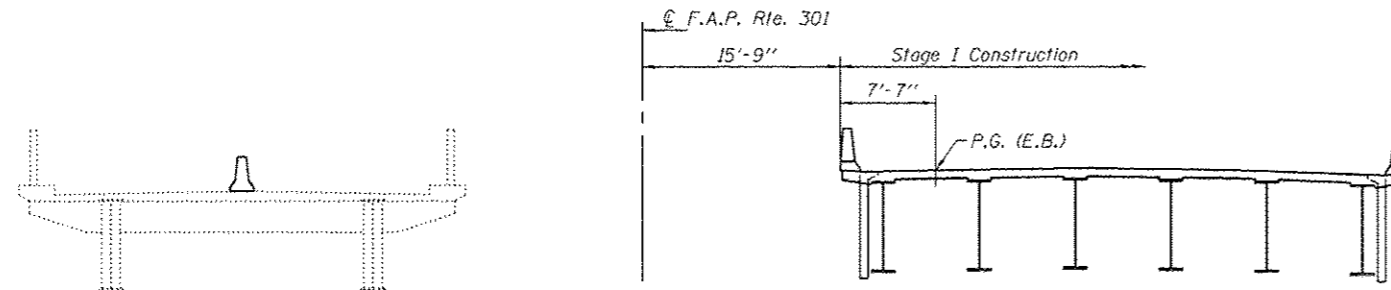
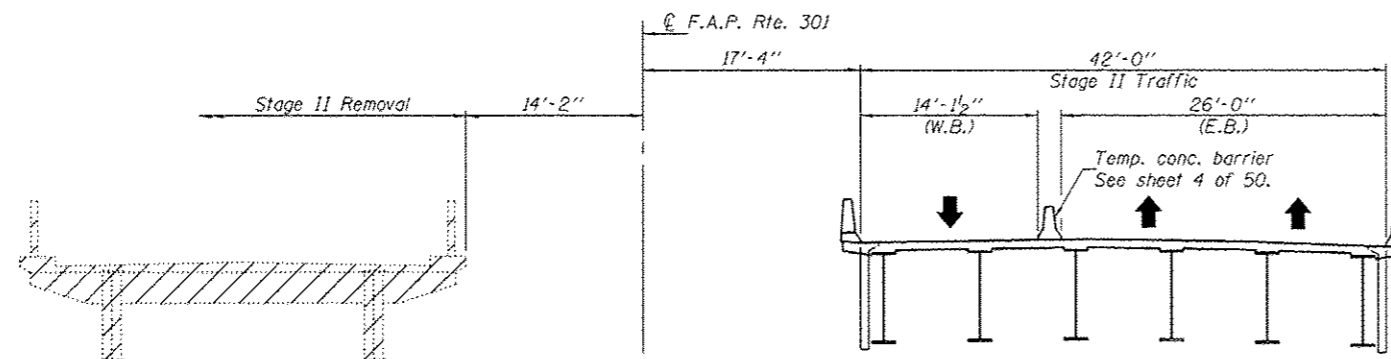


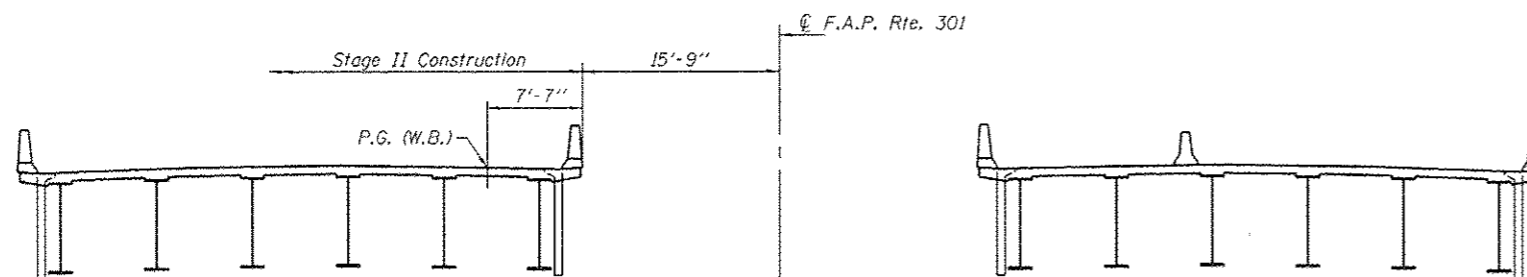
STAGE I REMOVAL



STAGE I CONSTRUCTION

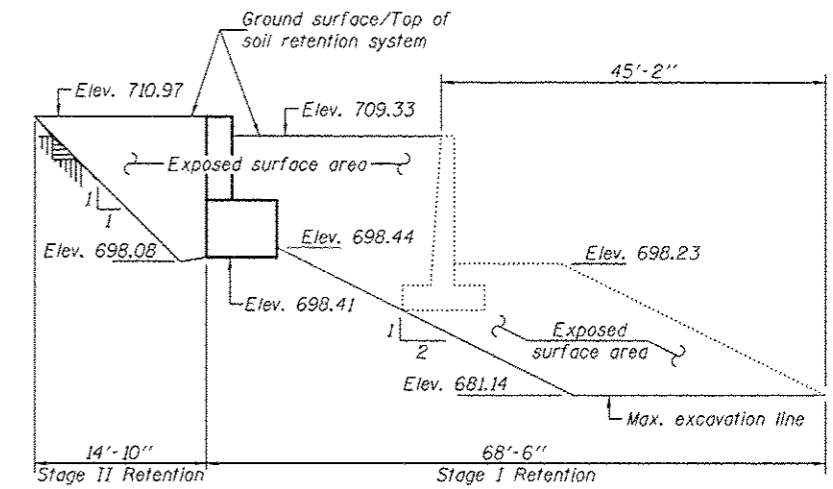


STAGE II REMOVAL

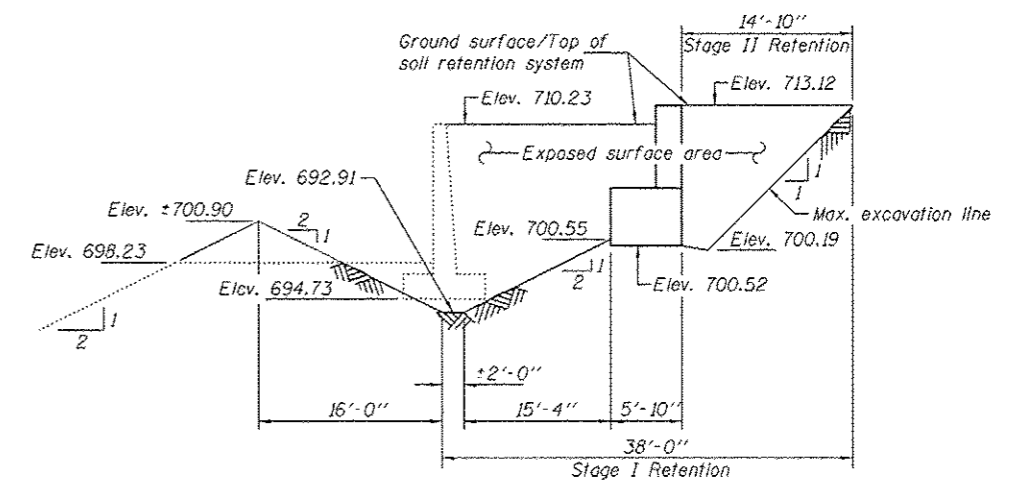


STAGE II CONSTRUCTION

Notes: All sections are looking east.
Hatched area indicates removal of existing superstructure.
For quantity of temporary concrete barrier, see Roadway Plans.



TEMPORARY SOIL RETENTION SYSTEM - WEST ABUT.



TEMPORARY SOIL RETENTION SYSTEM - EAST ABUT.

Note: A cantilevered sheet piling design does not appear feasible and additional members or other retention systems may be necessary. The Contractor shall submit a temporary soil retention system design including plan details and calculations for review and acceptance by the Engineer.

DESIGNED - Nick R. Barnett	EXAMINED - <i>Joan F. [Signature]</i>	DATE - OCTOBER 4, 2013	STATE OF ILLINOIS DEPARTMENT OF TRANSPORTATION		STAGE CONSTRUCTION & TEMP. SOIL RETENTION SYSTEM DETAILS STRUCTURE NO. 101-0197 (E.B.) & 101-0198 (W.B.)		F.A.P. RTE. 301	SECTION 3BR & 3BR-1	COUNTY WINNEBAGO	TOTAL SHEETS 290	SHEET NO. 178
CHECKED - Frank W. Sharpe	PASSED - <i>[Signature]</i>	REVISED -					ILLINOIS FED. AID PROJECT				
DRAWN - n.t. duong	ACTING ENGINEER OF BRIDGES AND STRUCTURES	REVISED -	SHEET NO. 3 OF 50 SHEETS		CONTRACT NO. 64D19						
CHECKED - NRB/FWS/GRA											