

NORTH CURB LINE

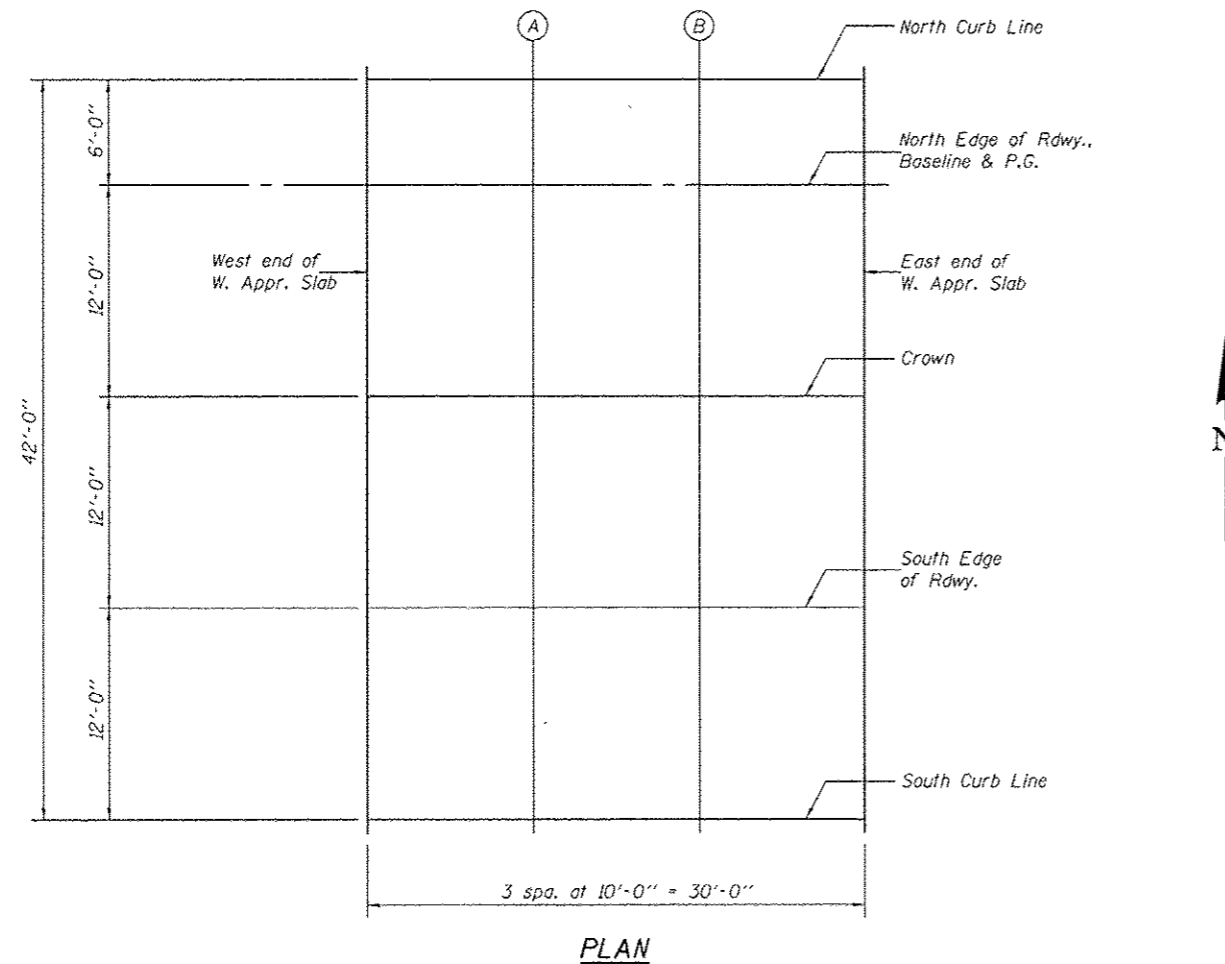
Location	Station	Offset	Theoretical Grade Elevations
West end of W. Appr. Slab	192871.71	-6.00	710.71
A	192881.71	-6.00	710.75
B	192891.71	-6.00	710.80
East end of W. Appr. Slab	192901.71	-6.00	710.85

NORTH EDGE OF RDWY., BASELINE & P.G.

Location	Station	Offset	Theoretical Grade Elevations
West end of W. Appr. Slab	192871.71	0.00	710.83
A	192881.71	0.00	710.88
B	192891.71	0.00	710.93
East end of W. Appr. Slab	192901.71	0.00	710.98

CROWN

Location	Station	Offset	Theoretical Grade Elevations
West end of W. Appr. Slab	192871.71	12.00	711.02
A	192881.71	12.00	711.07
B	192891.71	12.00	711.12
East end of W. Appr. Slab	192901.71	12.00	711.16



SOUTH EDGE OF RDWY.

Location	Station	Offset	Theoretical Grade Elevations
West end of W. Appr. Slab	192871.71	24.00	710.83
A	192881.71	24.00	710.88
B	192891.71	24.00	710.93
East end of W. Appr. Slab	192901.71	24.00	710.98

SOUTH CURB LINE

Location	Station	Offset	Theoretical Grade Elevations
West end of W. Appr. Slab	192871.71	36.00	710.58
A	192881.71	36.00	710.63
B	192891.71	36.00	710.68
East end of W. Appr. Slab	192901.71	36.00	710.73

DESIGNED - Nick R. Barnett	EXAMINED - <i>Joanne F. Hill</i>	DATE - OCTOBER 4, 2013
CHECKED - Frank W. Sharpe	ACTING ENGINEER OF BRIDGE DESIGN	
DRAWN - h.t. duong	PASSED - <i>Carl Perry</i>	REVISED -
CHECKED - NBB/FWS/GRA	ACTING ENGINEER OF BRIDGES AND STRUCTURES	REVISED -

**STATE OF ILLINOIS
DEPARTMENT OF TRANSPORTATION**

**TOP OF WEST APPROACH SLAB ELEVATION (E.B.)
STRUCTURE NO. 101-0197 (E.B.) & 101-0198 (W.B.)**

F.A.P. RTE. 301	SECTION 3BR & 3BR-1	COUNTY WINNEBAGO	TOTAL SHEETS 290	SHEET NO. 188
			CONTRACT NO. 64D19	
ILLINOIS FED. AID PROJECT				