

**NORTH CURB LINE**

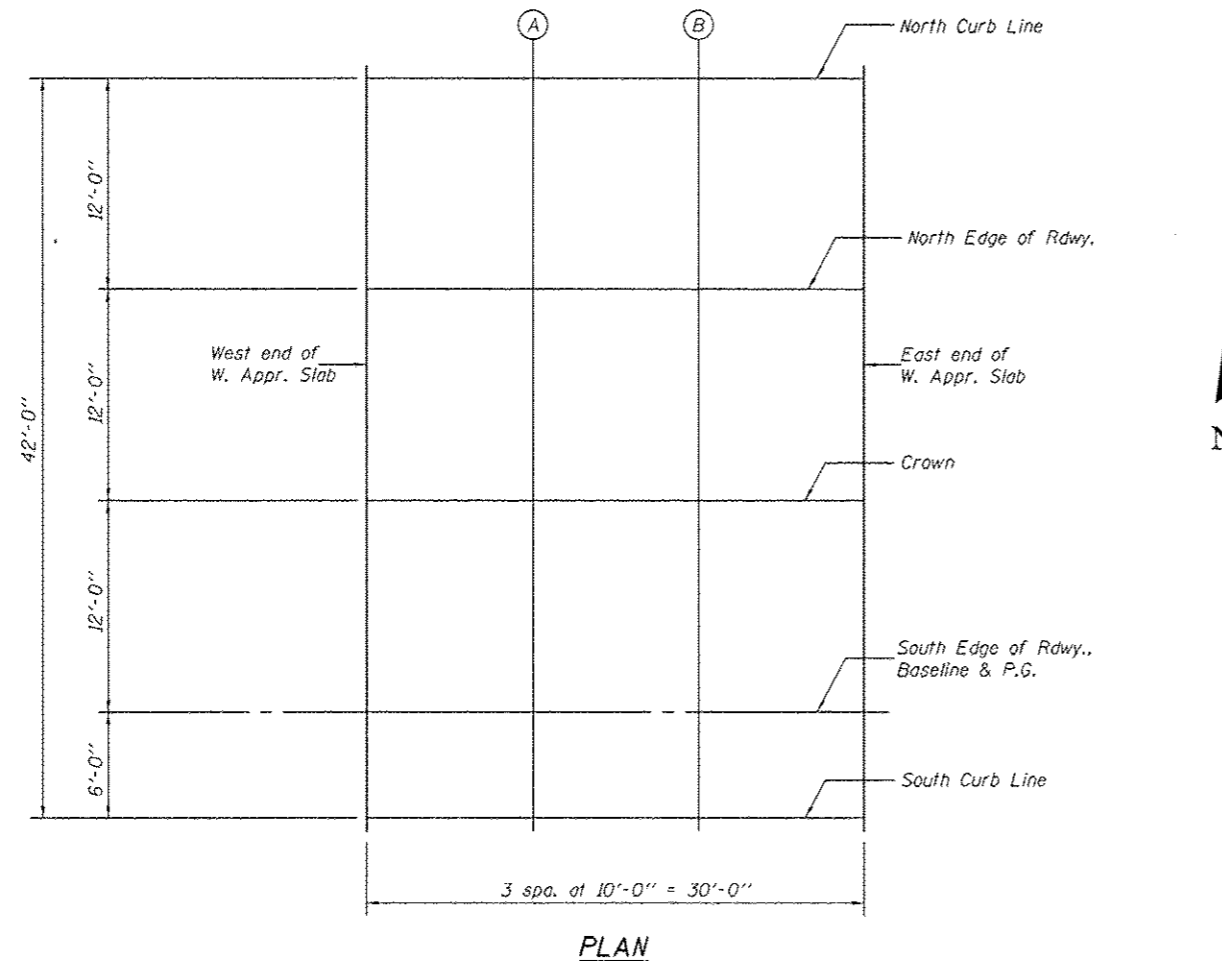
Location	Station	Offset	Theoretical Grade Elevations
West end of W. Appr. Slab	292871.72	-36.00	710.58
A	292881.72	-36.00	710.63
B	292891.72	-36.00	710.68
East end of W. Appr. Slab	292901.72	-36.00	710.73

**NORTH EDGE OF RDWY.**

Location	Station	Offset	Theoretical Grade Elevations
West end of W. Appr. Slab	292871.72	-24.00	710.83
A	292881.72	-24.00	710.88
B	292891.72	-24.00	710.93
East end of W. Appr. Slab	292901.72	-24.00	710.98

**CROWN**

Location	Station	Offset	Theoretical Grade Elevations
West end of W. Appr. Slab	292871.72	-12.00	711.02
A	292881.72	-12.00	711.07
B	292891.72	-12.00	711.12
East end of W. Appr. Slab	292901.72	-12.00	711.16



**SOUTH EDGE OF RDWY., BASELINE & P.G.**

Location	Station	Offset	Theoretical Grade Elevations
West end of W. Appr. Slab	292871.72	0.00	710.83
A	292881.72	0.00	710.88
B	292891.72	0.00	710.93
East end of W. Appr. Slab	292901.72	0.00	710.98

**SOUTH CURB LINE**

Location	Station	Offset	Theoretical Grade Elevations
West end of W. Appr. Slab	292871.72	6.00	710.71
A	292881.72	6.00	710.75
B	292891.72	6.00	710.80
East end of W. Appr. Slab	292901.72	6.00	710.85

DESIGNED - Nick R. Barnett	EXAMINED - <i>Joey F. [Signature]</i>	DATE - OCTOBER 4, 2013
CHECKED - Frank W. Sharpe	ACTING ENGINEER OF BRIDGE DESIGN	
DRAWN - h.t. duong	PASSED - <i>[Signature]</i>	REVISED -
CHECKED - NBB/FWS/GRA	ACTING ENGINEER OF BRIDGES AND STRUCTURES	REVISED -

**STATE OF ILLINOIS  
DEPARTMENT OF TRANSPORTATION**

**TOP OF WEST APPROACH SLAB ELEVATIONS (W.B.)  
STRUCTURE NO. 101-0197 (E.B.) & 101-0198 (W.B.)**

F.A.P. RTE. 301	SECTION 3BR & 3BR-1	COUNTY WINNEBAGO	TOTAL SHEETS 290	SHEET NO. 190
CONTRACT NO. 64D19			ILLINOIS FED. AID PROJECT	