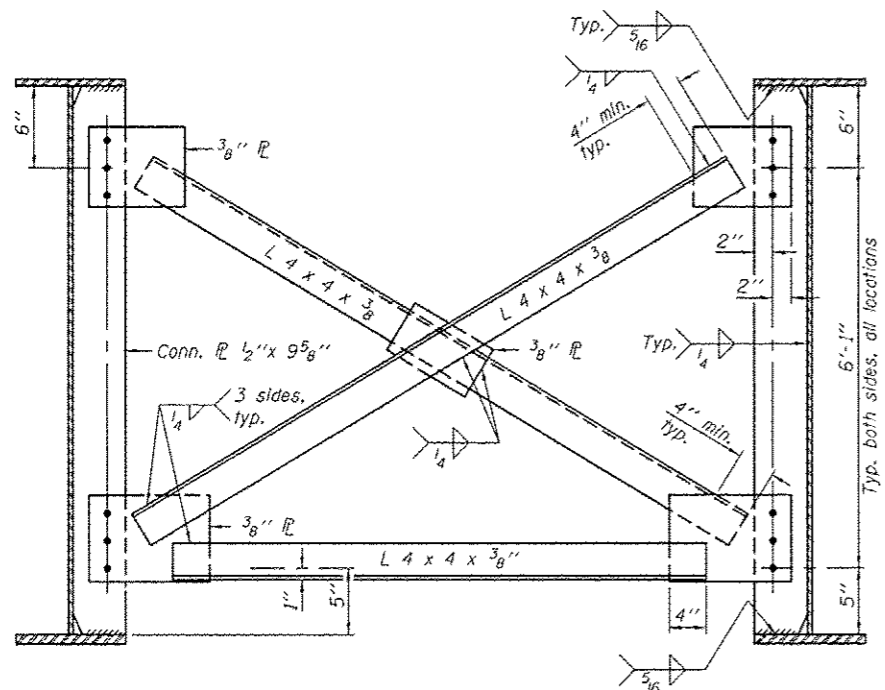
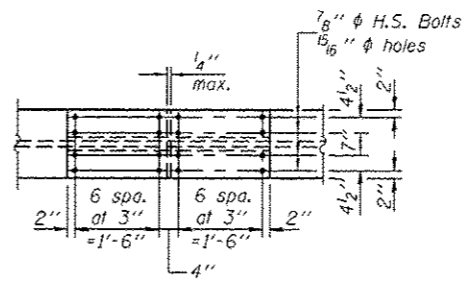


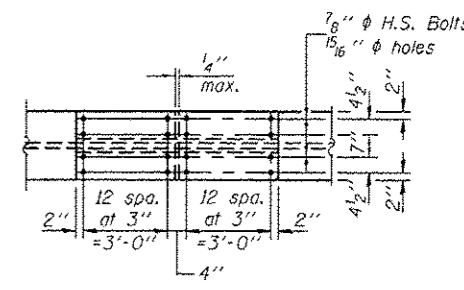
CROSS FRAME CF
(20 Required)



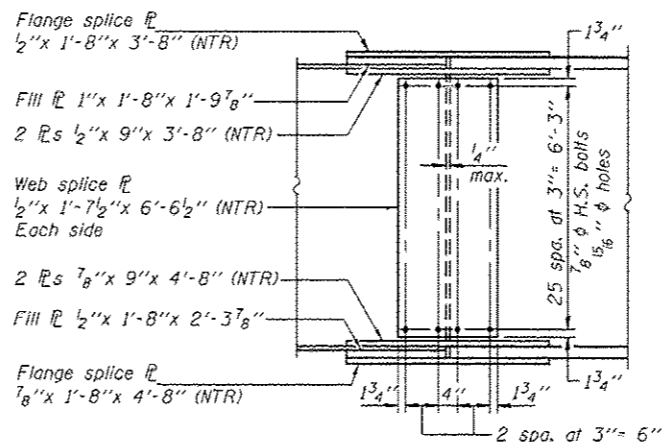
CROSS FRAME CF1
(170 Required)



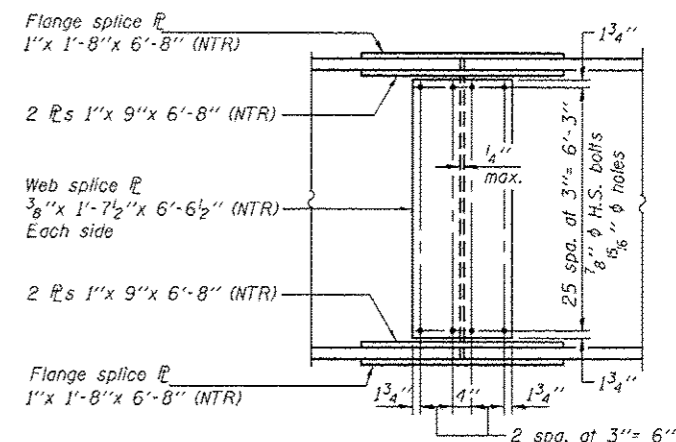
PLAN - TOP FLANGE



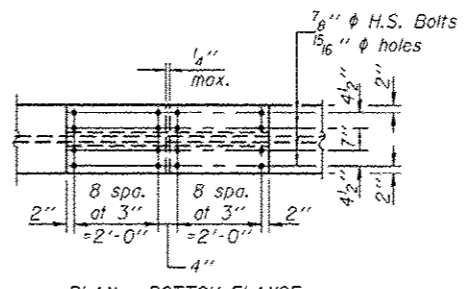
PLAN - TOP FLANGE



ELEVATION

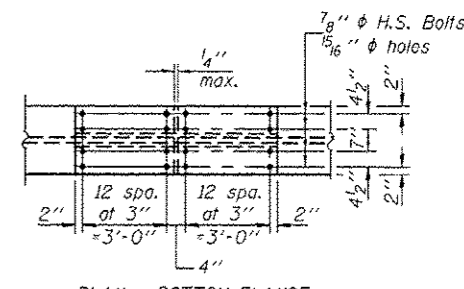


ELEVATION



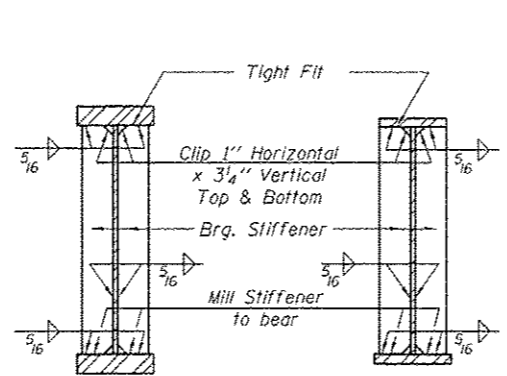
PLAN - BOTTOM FLANGE

SPLICE 1 & 4 DETAILS
(24 Required)

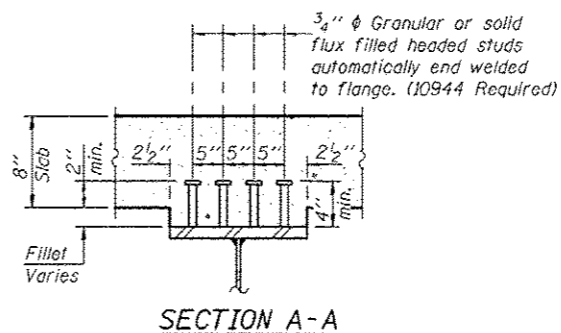


PLAN - BOTTOM FLANGE

SPLICE 2 & 3 DETAILS
(24 Required)



SECTION AT PIER



SECTION A-A

Notes: Load carrying components designated "NTR" shall conform to the Impact Testing Requirement, Zone 2. Use 3/4 inch H.S. bolts with 15/16 inch diameter holes in CF and CF1. Two hardened washers required for each set of oversized holes. Place cross frame with channel flanges and outstanding angle legs outward from abutment backwall. Omit connecting plates on exterior side of exterior girder. All splice plates except filler plate shall be AASHTO M 270 Gr. 50.

DESIGNED - Nick R. Barnett	EXAMINED - <i>James F. Hoff</i>
CHECKED - E. Frank W. Sharpe	ACTING ENGINEER OF BRIDGE DESIGN
DRAWN - h.t. duong	PASSED - <i>Carl</i>
CHECKED - NBB/FWS/GRA	ACTING ENGINEER OF BRIDGES AND STRUCTURES

DATE - OCTOBER 4, 2013	REVISED -
REVISED -	REVISED -

STATE OF ILLINOIS
DEPARTMENT OF TRANSPORTATION

STRUCTURAL STEEL DETAILS
STRUCTURE NO. 101-0197 (E.B.) & 101-0198 (W.B.)

SHEET NO. 28 OF 50 SHEETS

F.A.P. R.T.E.	SECTION	COUNTY	TOTAL SHEETS	SHEET NO.
301	3BR & 3BR-1	WINNEBAGO	290	203
				CONTRACT NO. 64D19
ILLINOIS FED. AID PROJECT				