





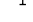

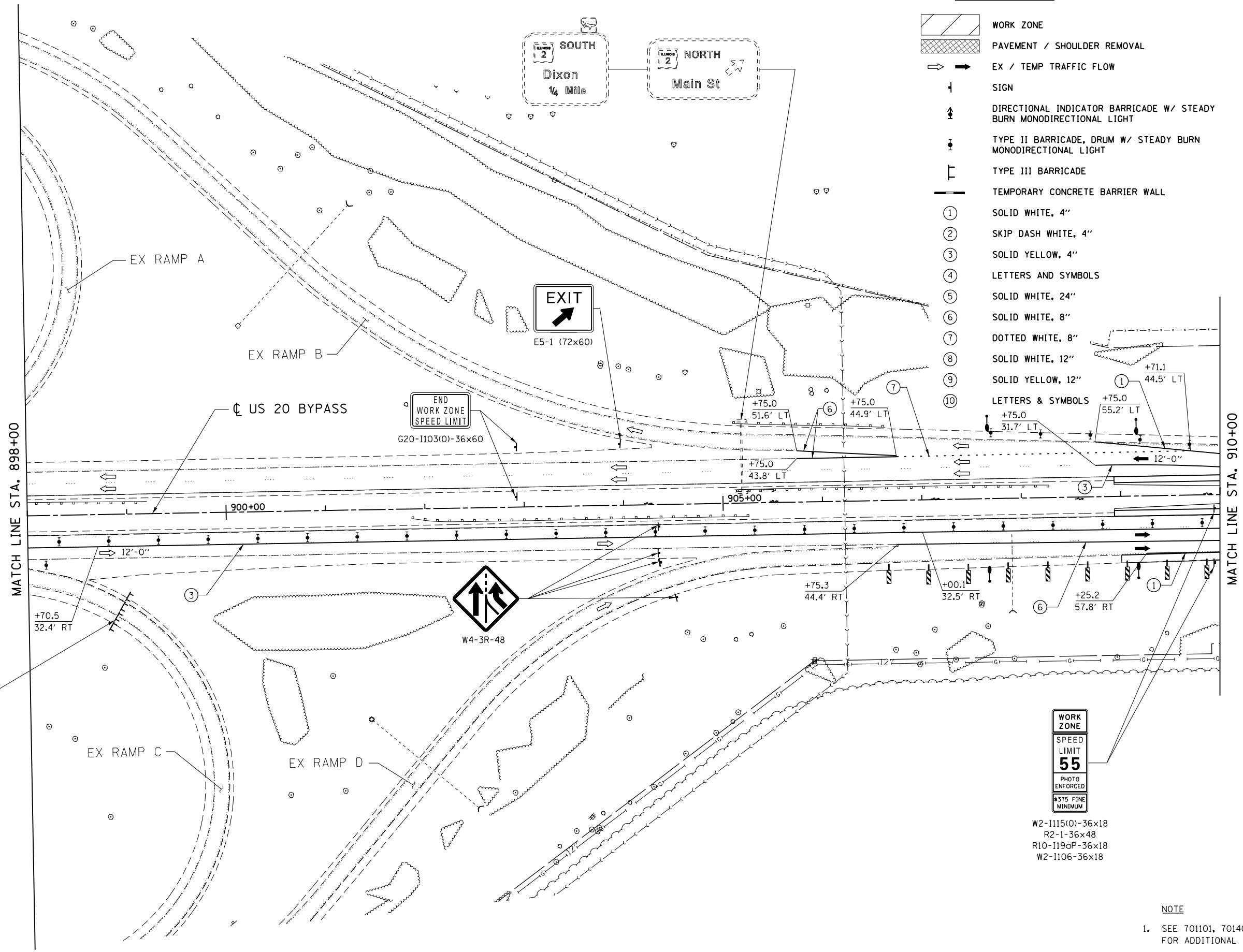
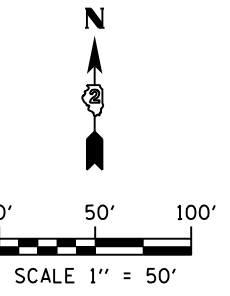


STAGING LEGEND

-  WORK ZONE
-  PAVEMENT / SHOULDER REMOVAL
-  EX / TEMP TRAFFIC FLOW
-  SIGN
-  DIRECTIONAL INDICATOR BARRICADE W/ STEADY BURN MONODIRECTIONAL LIGHT
-  TYPE II BARRICADE, DRUM W/ STEADY BURN MONODIRECTIONAL LIGHT
-  TYPE III BARRICADE
-  TEMPORARY CONCRETE BARRIER WALL
- ① SOLID WHITE, 4"
- ② SKIP DASH WHITE, 4"
- ③ SOLID YELLOW, 4"
- ④ LETTERS AND SYMBOLS
- ⑤ SOLID WHITE, 24"
- ⑥ SOLID WHITE, 8"
- ⑦ DOTTED WHITE, 8"
- ⑧ SOLID WHITE, 12"
- ⑨ SOLID YELLOW, 12"
- ⑩ LETTERS & SYMBOLS



WORK ZONE
SPEED LIMIT 55
 PHOTO ENFORCED
 #375 FINE MINIMUM

W2-1115(0)-36x18
 R2-1-36x48
 R10-119aP-36x18
 W2-1106-36x18

NOTE
 1. SEE 701101, 701400, 701401, 701411, & 704001 FOR ADDITIONAL INFORMATION

FILE NAME = D264019-ah-t-Staging-2.dwg
 MODEL = Default
 PLOT DRIVER = VBA_IIDOT_PDF...11x17.plt



USER NAME = rgoertz	DESIGNED - RG	REVISED -
PLOT SCALE = 100.0000' / in.	DRAWN - TRF	REVISED -
PLOT DATE = 8/16/2013	CHECKED - CMS	REVISED -
	DATE - 07/01/2013	REVISED -

**STATE OF ILLINOIS
 DEPARTMENT OF TRANSPORTATION**

STAGING PLAN STAGE 2 - US 20 BYPASS			
SCALE: 1" = 50'	SHEET NO.	OF SHEETS	STA. 898+00 TO STA. 910+00

F.A.P. RTE.	SECTION	COUNTY	TOTAL SHEETS	SHEET NO.
301	3BR & 3BR-1	WINNEBAGO	290	70
CONTRACT NO. 64D19				
FED. ROAD DIST. NO.	ILLINOIS	FED. AID PROJECT		