

NORTH CURB LINE

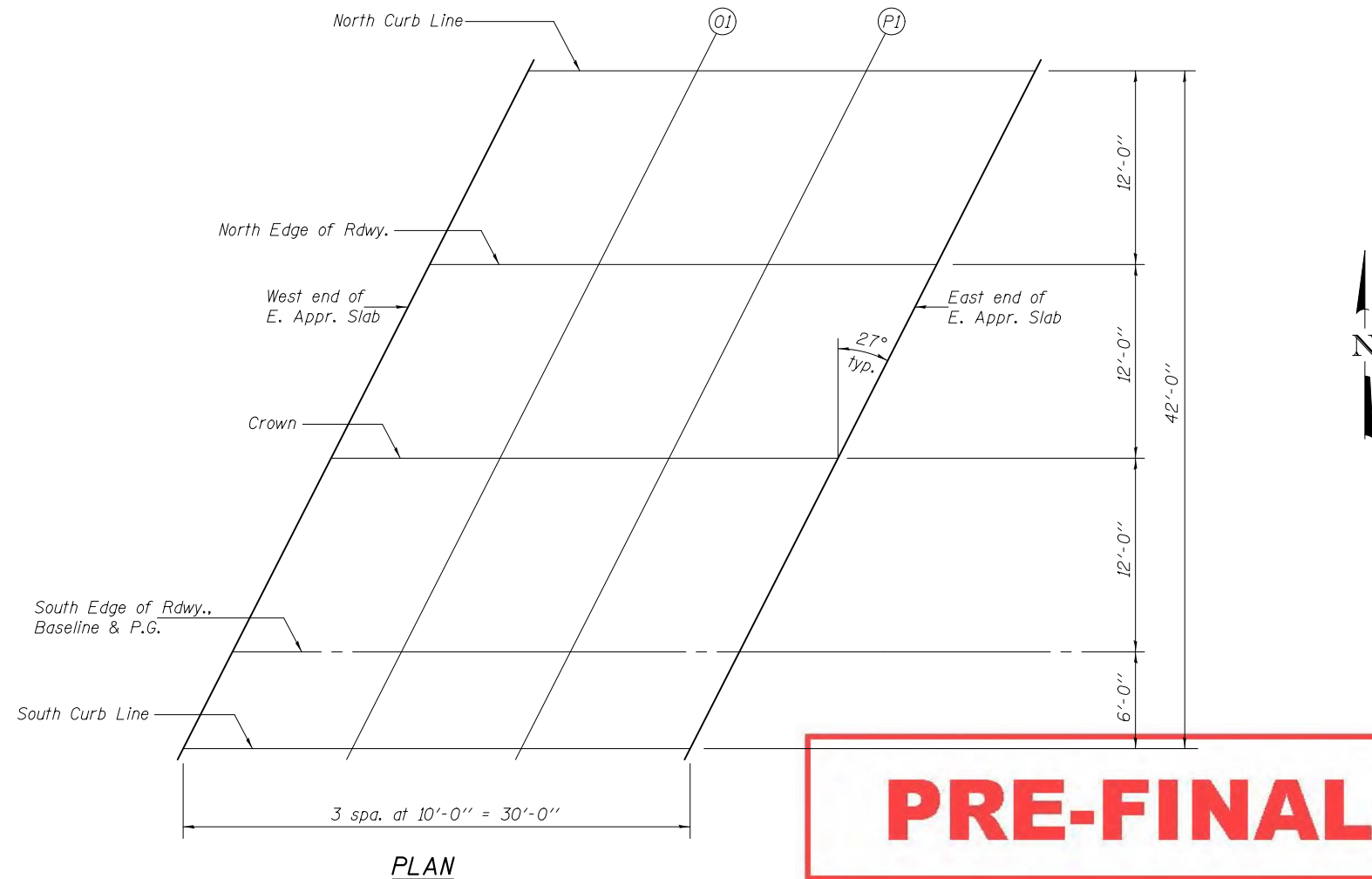
| Location | Station | Offset | Theoretical Grade Elevations |
|---------------------------|-----------|--------|------------------------------|
| West end of E. Appr. Slab | 292478.31 | -36.00 | 711.03 |
| O1 | 292488.31 | -36.00 | 710.96 |
| P1 | 292498.31 | -36.00 | 710.90 |
| East end of E. Appr. Slab | 292508.31 | -36.00 | 710.83 |

NORTH EDGE OF RDWY.

| Location | Station | Offset | Theoretical Grade Elevations |
|---------------------------|----------|--------|------------------------------|
| West end of E. Appr. Slab | 292472.2 | -24.00 | 711.32 |
| O1 | 292482.2 | -24.00 | 711.25 |
| P1 | 292492.2 | -24.00 | 711.19 |
| East end of E. Appr. Slab | 292502.2 | -24.00 | 711.12 |

CROWN

| Location | Station | Offset | Theoretical Grade Elevations |
|---------------------------|-----------|--------|------------------------------|
| West end of E. Appr. Slab | 292466.08 | -12.00 | 711.54 |
| O1 | 292476.08 | -12.00 | 711.48 |
| P1 | 292486.08 | -12.00 | 711.41 |
| East end of E. Appr. Slab | 292496.08 | -12.00 | 711.35 |



SOUTH EDGE OF RDWY., BASELINE & P.G.

| Location | Station | Offset | Theoretical Grade Elevations |
|---------------------------|-----------|--------|------------------------------|
| West end of E. Appr. Slab | 292459.97 | 0.00 | 711.40 |
| O1 | 292469.97 | 0.00 | 711.33 |
| P1 | 292479.97 | 0.00 | 711.27 |
| East end of E. Appr. Slab | 292489.97 | 0.00 | 711.20 |

SOUTH CURB LINE

| Location | Station | Offset | Theoretical Grade Elevations |
|---------------------------|-----------|--------|------------------------------|
| West end of E. Appr. Slab | 292456.91 | 6.00 | 711.29 |
| O1 | 292466.91 | 6.00 | 711.23 |
| P1 | 292476.91 | 6.00 | 711.16 |
| East end of E. Appr. Slab | 292486.91 | 6.00 | 711.10 |