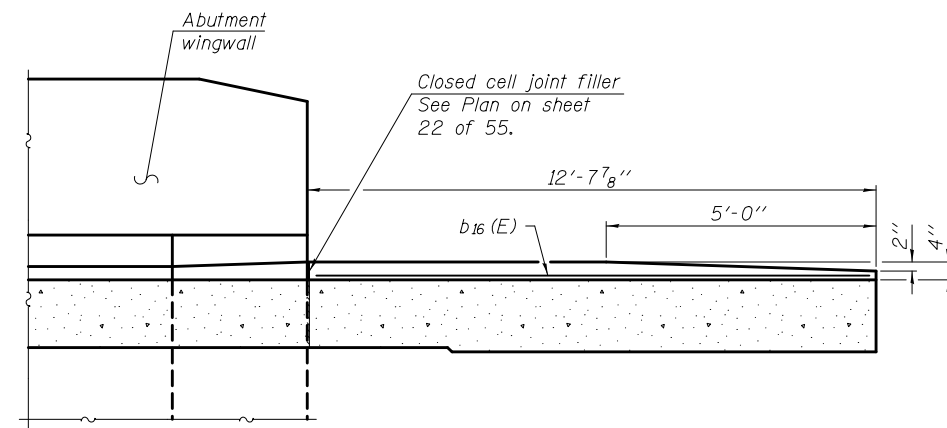
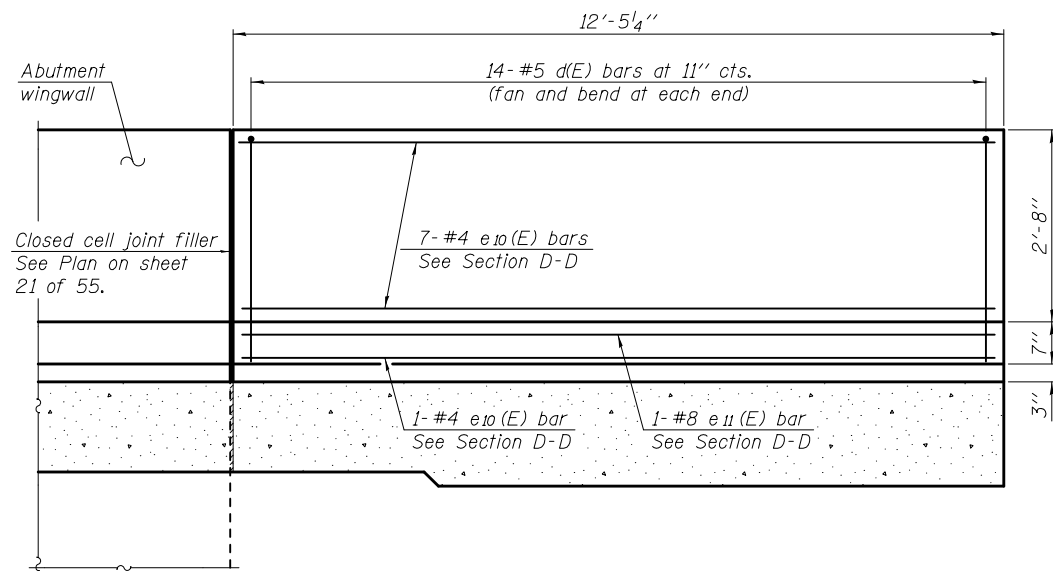


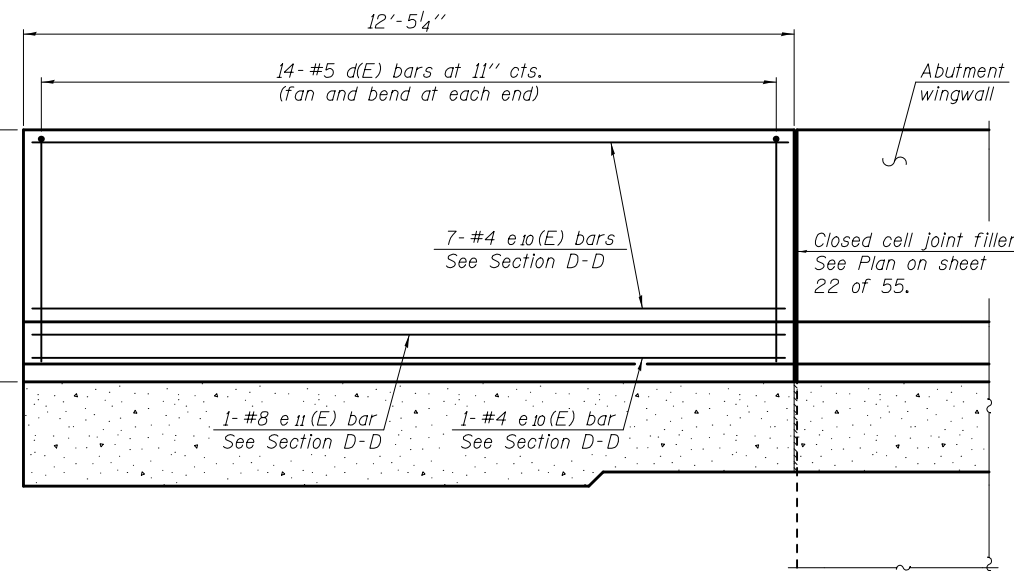
**VIEW E-E**  
(Showing curb reinforcement)



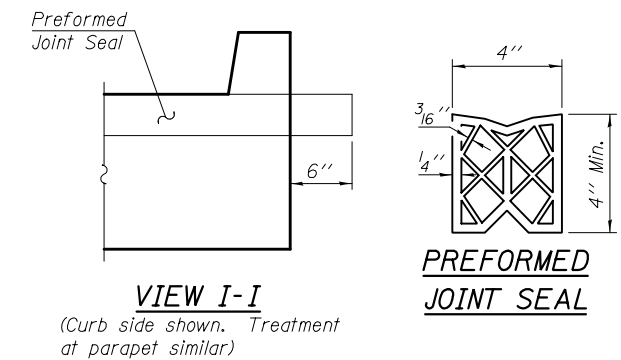
**VIEW G-G**  
(Showing curb reinforcement)



**VIEW F-F**  
(Showing parapet reinforcement)



**VIEW H-H**  
(Showing parapet reinforcement)

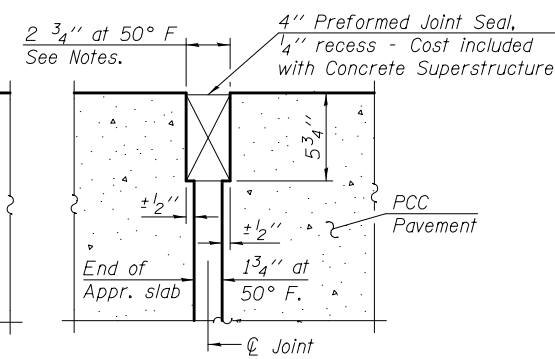
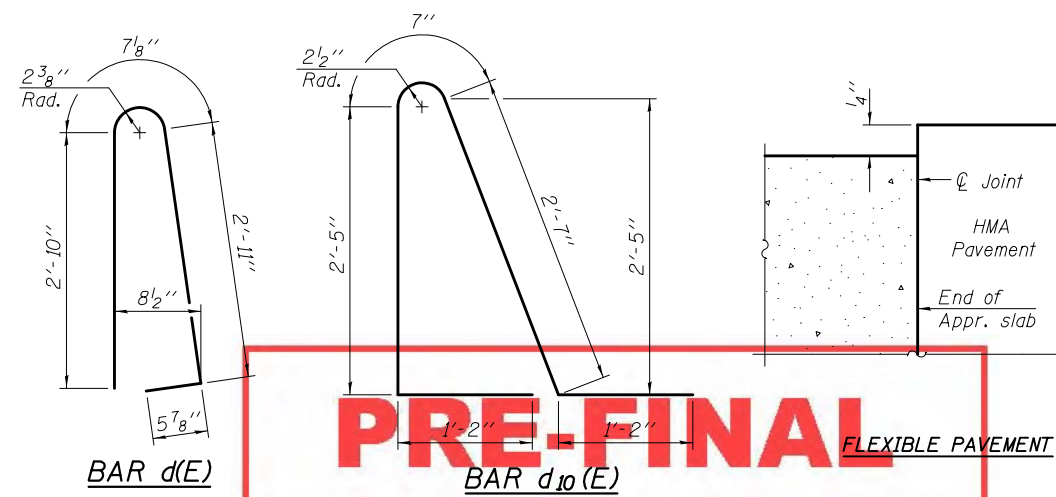
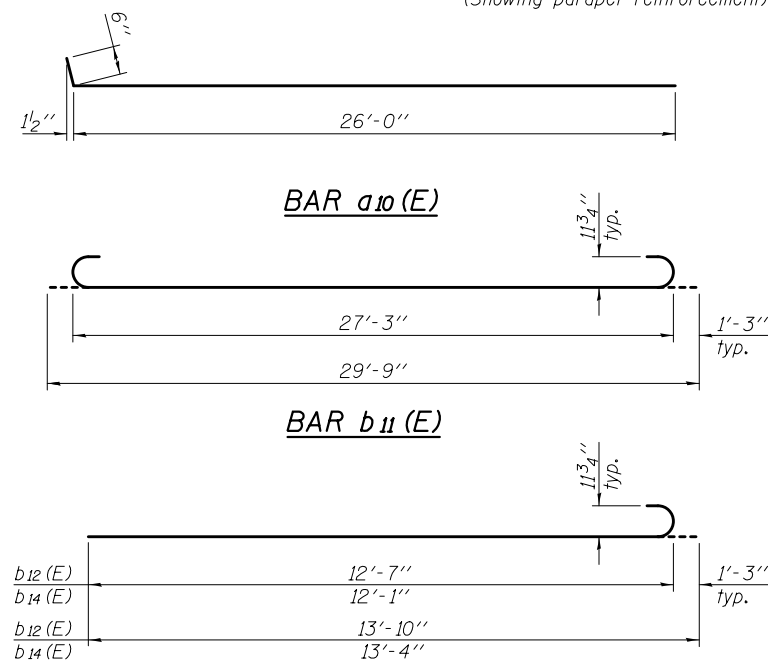


**VIEW I-I**

(Curb side shown. Treatment at parapet similar)

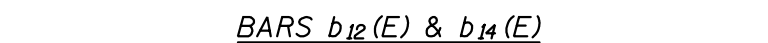
**FOUR APPROACHES  
BILL OF MATERIAL**

Bar	No.	Size	Length	Shape
a2(E)	44	#6	6'-6"	—
a10(E)	48	#4	26'-6"	—
a11(E)	48	#4	26'-0"	—
a12(E)	104	#4	24'-9"	—
a13(E)	88	#5	49'-6"	—
a14(E)	92	#5	46'-8"	—
b10(E)	136	#4	29'-8"	—
b11(E)	404	#9	29'-9"	—
b12(E)	8	#9	13'-10"	—
b13(E)	4	#4	11'-7"	—
b14(E)	12	#9	13'-4"	—
b15(E)	12	#5	12'-1"	—
b16(E)	4	#4	12'-5"	—
d(E)	56	#5	6'-10"	—
d10(E)	60	#5	7'-11"	—
e10(E)	32	#4	12'-2"	—
e11(E)	4	#8	12'-2"	—
t10(E)	360	#4	10'-10"	—
w10(E)	160	#5	49'-6"	—
Concrete Superstructure			Cu. Yd.	
Concrete Structures			Cu. Yd.	
Reinforcement Bars, Epoxy Coated			Pound	69,700



**PRE-FINAL**

**DETAIL A**



**BARS b12(E) & b14(E)**

DESIGNED - NICHOLAS R. BARNETT	EXAMINED - _____	DATE - _____
CHECKED - AL-BARRAE SHEBIB	ACTING ENGINEER OF BRIDGE DESIGN	
DRAWN - MICHAEL B. MOSSMAN	PASSED - _____	REVISED - _____
CHECKED - N.R.B. / G.R.A.	ACTING ENGINEER OF BRIDGES AND STRUCTURES	REVISED - _____

**STATE OF ILLINOIS  
DEPARTMENT OF TRANSPORTATION**

**BRIDGE APPROACH SLAB DETAILS  
STRUCTURE NO. 101 - 0195 (EB) & 101 - 0196 (WB)**

SHEET NO. 24 OF 55 SHEETS

F.A.P. RTE.	SECTION	COUNTY	TOTAL SHEETS	SHEET NO.
301	3BR & 3BR-1	WINNEBAGO		
CONTRACT NO. 64D19				
ILLINOIS FED. AID PROJECT				