

STANDARD BAR SPLICER ASSEMBLY

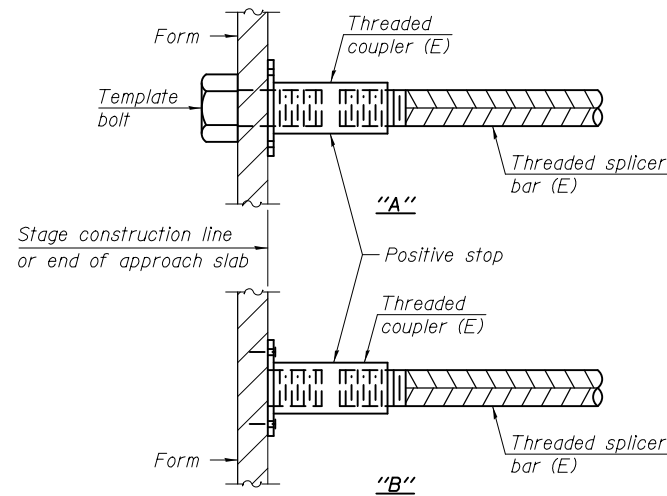
| Minimum Lap Lengths | | | | | | |
|------------------------|---------|---------|---------|---------|---------|---------|
| Bar size to be spliced | Table 1 | Table 2 | Table 3 | Table 4 | Table 5 | Table 6 |
| 3, 4 | 1'-5" | 1'-11" | 2'-1" | 2'-4" | 2'-7" | 2'-11" |
| 5 | 1'-9" | 2'-5" | 2'-7" | 2'-11" | 3'-3" | 3'-8" |
| 6 | 2'-1" | 2'-11" | 3'-1" | 3'-6" | 3'-10" | 4'-5" |
| 7 | 2'-9" | 3'-10" | 4'-2" | 4'-8" | 5'-2" | 5'-10" |
| 8 | 3'-8" | 5'-1" | 5'-5" | 6'-2" | 6'-9" | 7'-8" |
| 9 | 4'-7" | 6'-5" | 6'-10" | 7'-9" | 8'-7" | 9'-8" |

- Table 1: Black bar, 0.8 Class C
- Table 2: Black bar, Top bar lap, 0.8 Class C
- Table 3: Epoxy bar, 0.8 Class C
- Table 4: Epoxy bar, Top bar lap, 0.8 Class C
- Table 5: Epoxy bar, Class C
- Table 6: Epoxy bar, Top bar top, Class C

Threaded splicer bar length = min. lap length + 1 1/2" + thread length

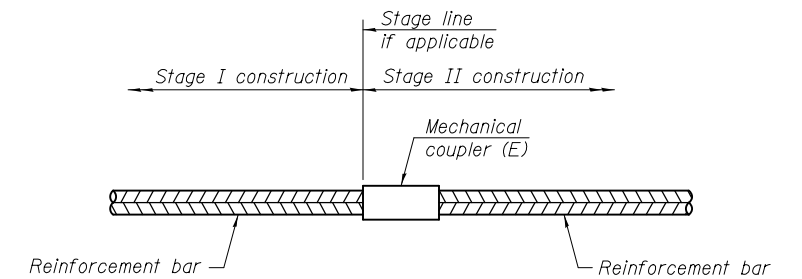
* Epoxy not required on Bar Splicer Assembly components used in conjunction with black bars.

| Location | Bar size | No. assemblies required | Table for minimum lap length |
|----------|----------|-------------------------|------------------------------|
| | | | |
| | | | |
| | | | |
| | | | |



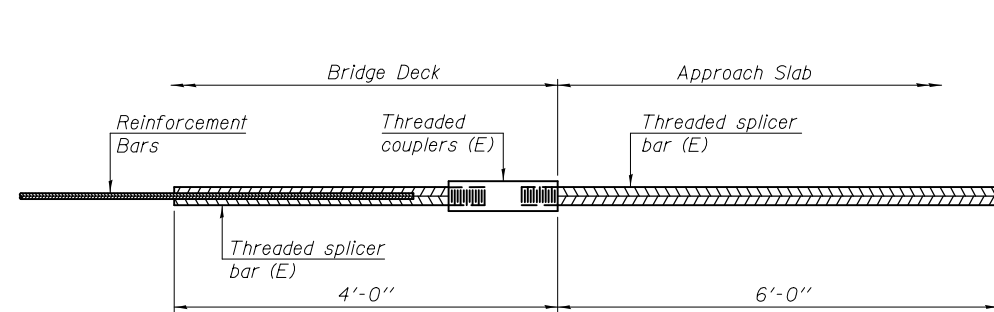
INSTALLATION AND SETTING METHODS

"A" : Set bar splicer assembly by means of a template bolt.
 "B" : Set bar splicer assembly by nailing to wood forms or cementing to steel forms.
 (E) : Indicates epoxy coating.



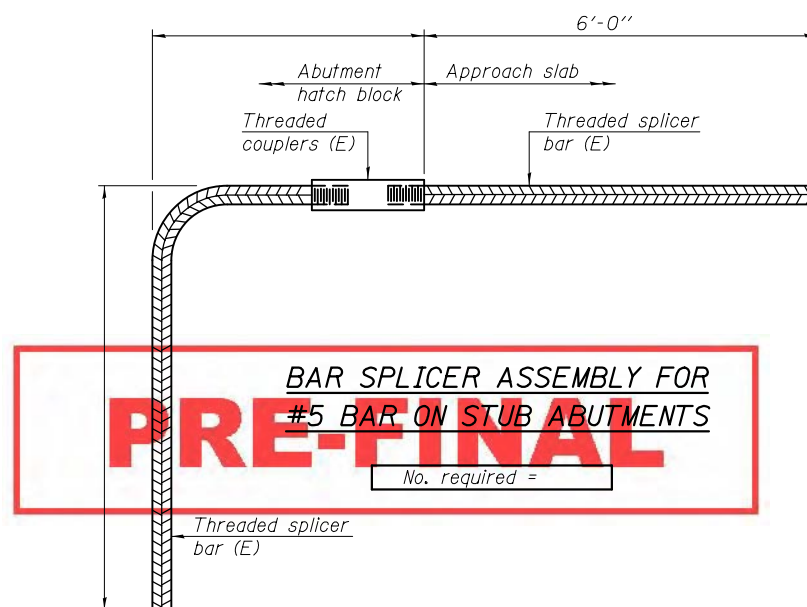
STANDARD MECHANICAL SPLICER

| Location | Bar size | No. assemblies required |
|----------|----------|-------------------------|
| | | |
| | | |
| | | |
| | | |



BAR SPLICER ASSEMBLY FOR #5 BAR ON INTEGRAL OR SEMI-INTEGRAL ABUTMENTS

No. required =



BAR SPLICER ASSEMBLY FOR #5 BAR ON STUB ABUTMENTS

No. required =

NOTES

Splicer bars shall be deformed with threaded ends and have a minimum 60 ksi yield strength.
 All reinforcement shall be lapped and tied to the splicer bars.
 Bar splicer assemblies shall be epoxy coated according to the requirements for reinforcement bars. See Section 508 of the Standard Specifications.
 See approved list of bar splicer assemblies and mechanical splicers for alternatives.

BSD-1

1-27-12

DESIGNED - Nick R. Barnett
 CHECKED - Al-Barræ R. Shebib
 DRAWN - h.t. duong
 CHECKED - NRB/GRA

EXAMINED - *Jayne F. Duff*
 PASSED - *Carl Perry*
 ACTING ENGINEER OF BRIDGE DESIGN
 ACTING ENGINEER OF BRIDGES AND STRUCTURES

DATE -
 REVISED
 REVISED

STATE OF ILLINOIS
 DEPARTMENT OF TRANSPORTATION

BAR SPLICER ASSEMBLY AND MECHANICAL SPLICER DETAILS
 STRUCTURE NO. 101-0195 (E.B.) & 101-0196 (W.B.)

SHEET NO. 49 OF 55 SHEETS

| F.A.P. RTE. | SECTION | COUNTY | TOTAL SHEETS | SHEET NO. |
|---------------------------|-------------|-----------|--------------|-----------|
| 301 | 3BR & 3BR-1 | WINNEBAGO | | |
| CONTRACT NO. 64D19 | | | | |
| ILLINOIS FED. AID PROJECT | | | | |