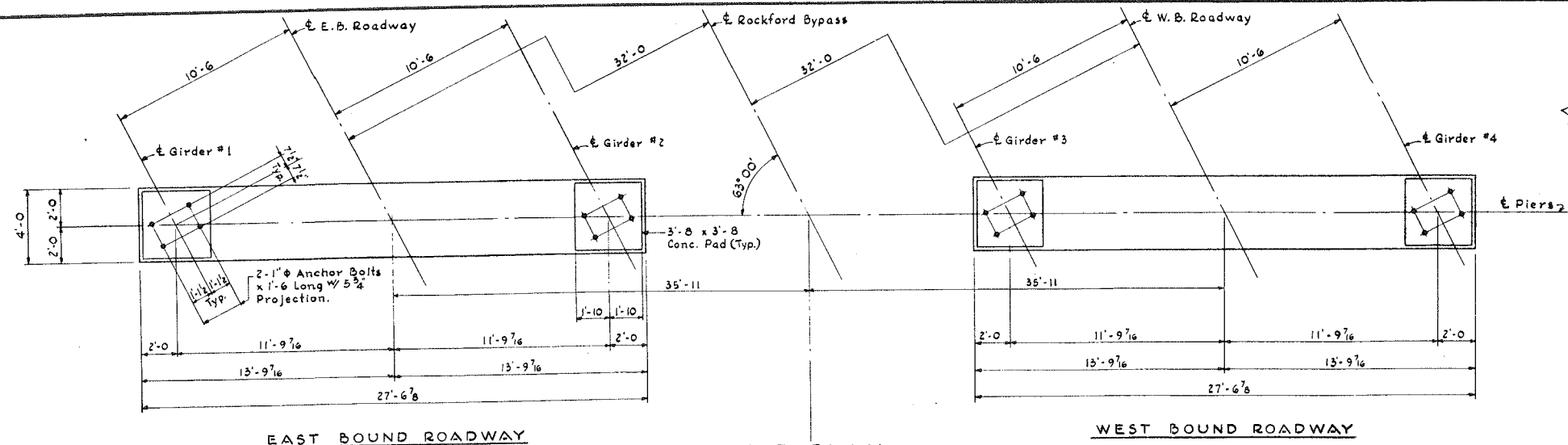
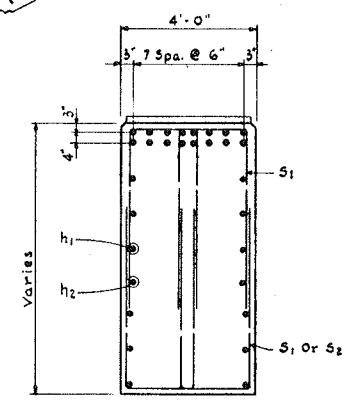


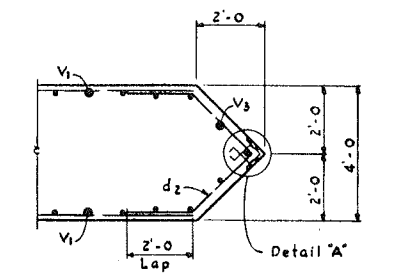
ROUTE NO.	SEC.	COUNTY	TOTAL SHEETS
194	35	WINNEBAGO	20
STA.	TO STA.		18
FED. ROAD DIST. NO. 7 ILLINOIS			PROJ.



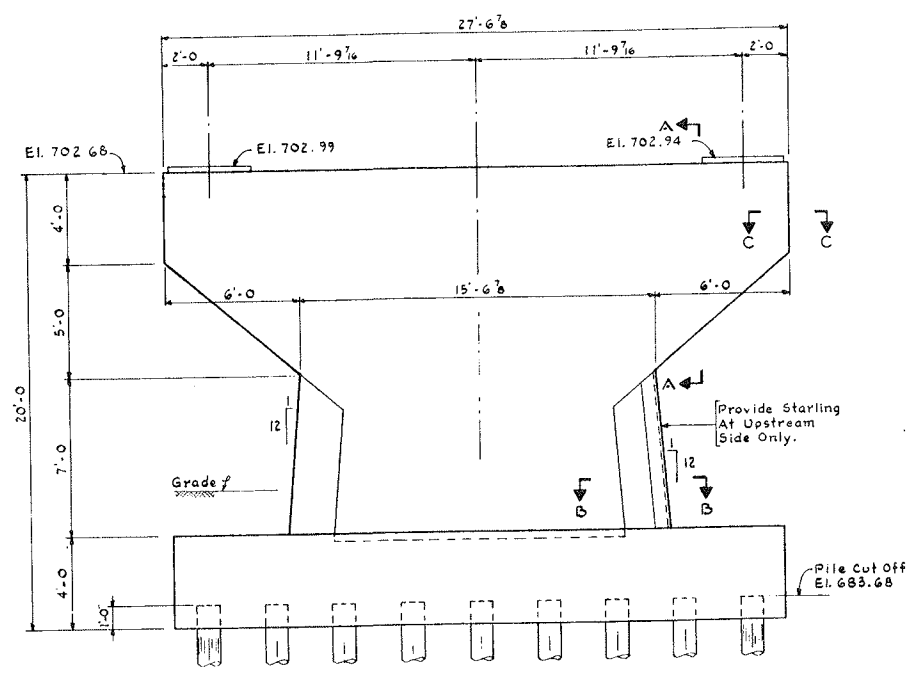
TOP PLAN
Scale: 1/4" = 1'-0"



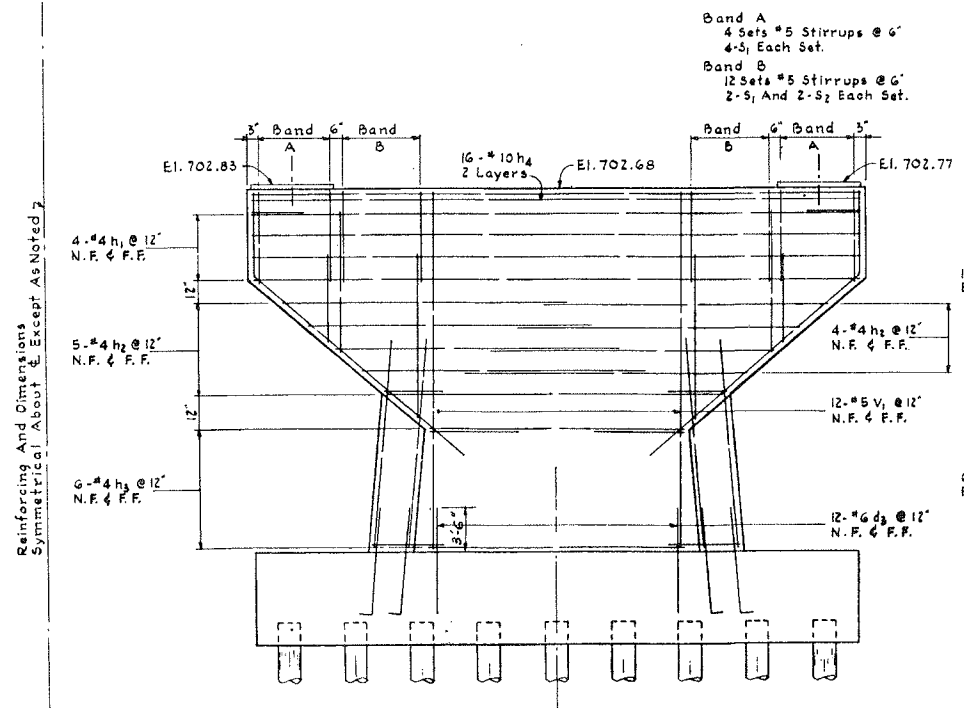
SECTION A-A
Scale: 3/8" = 1'-0"



SECTION B-B
Scale: 3/8" = 1'-0"

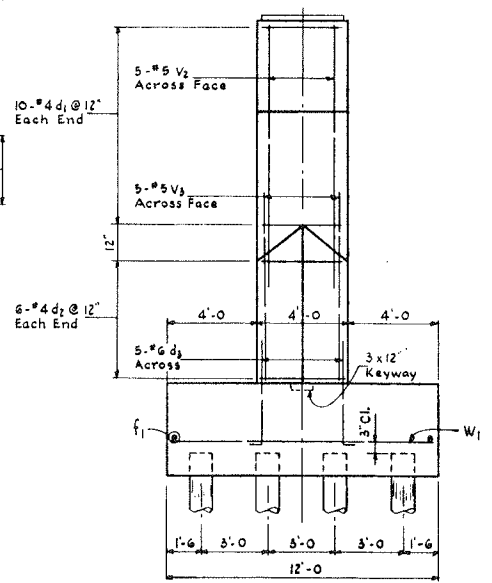


DIMENSIONS

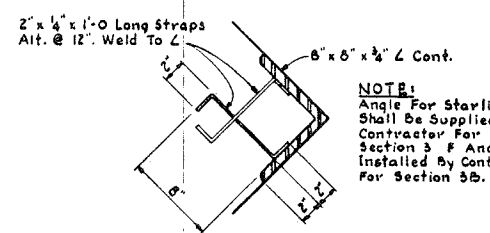


ELEVATIONS
Scale: 1/4" = 1'-0"

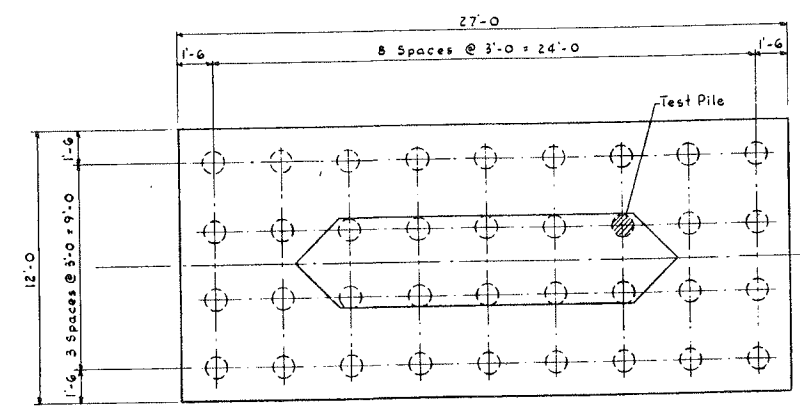
REINFORCING



END VIEW
Scale: 1/4" = 1'-0"

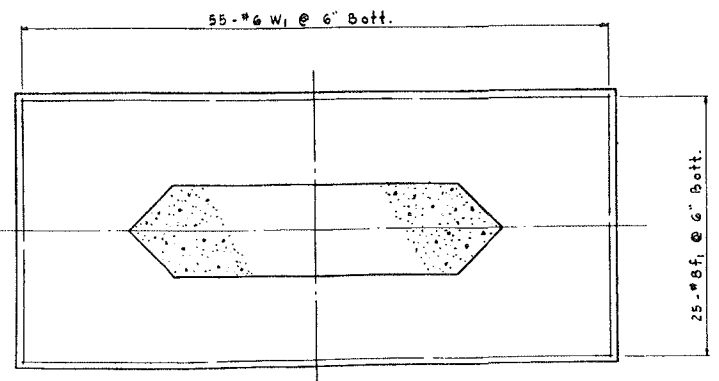


STARTING DETAIL A
Scale: 1/2" = 1'-0"



PILING PLAN

Piles And Footing Reinforcing Symmetrical About E



FOOTING PLAN
Scale: 1/4" = 1'-0"

REINFORCING

NOTE:
Minimum Lap All Reinforcement Bars Shall Be 20 Bar Diameters.

QUANTITIES FOR 2 PIERS		
ITEM	UNIT	TOTAL
CLASS "X" CONC.	CU. YDS.	187
REINFORCING	LBS.	15356
PILES	L.F.	4260
CLASS "A" EXCAVATION	CU. YDS.	220
TEST PILE	EACH	1

NOTES:
For General Notes See Drawing #2.
Work This Drawing With Reinforcing Schedule.
Concrete Pads To Be Poured Monolithically With Pier Cap.
PILE DATA:
30 Ton Concrete Piles
Estimated Length 60'
Number Required 72

ILLINOIS DIVISION OF HIGHWAY
ROCKFORD BYPASS
F. A. ROUTE 194
PROJECT SECTION 31
WINNEBAGO COUNTY
PIER NO. 1

Designed By: E.S. Drawn By: G.G. Checked By:

FOR INFORMATION ONLY