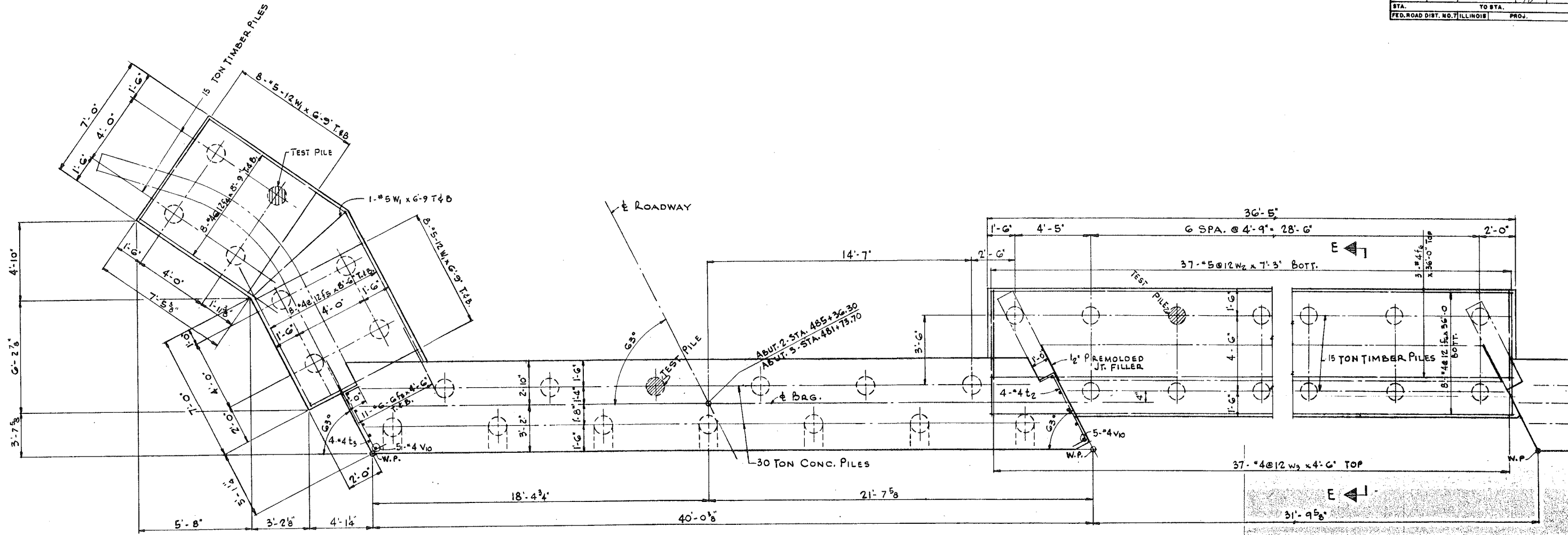


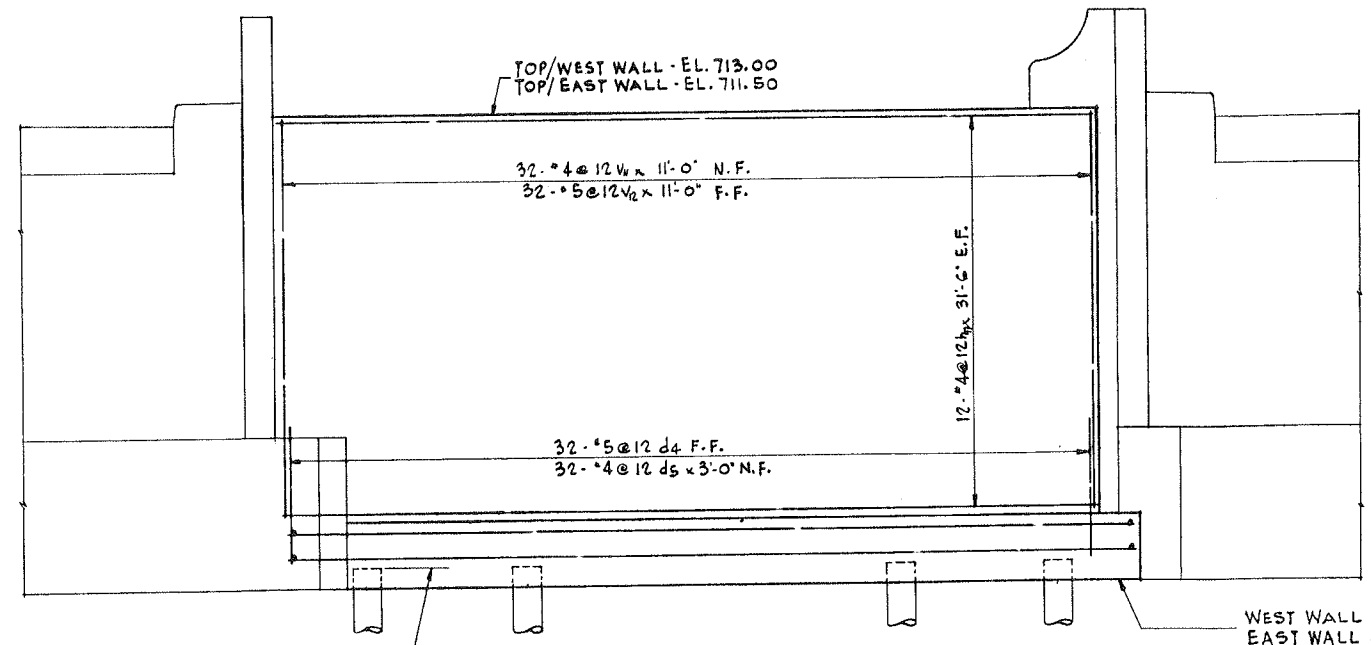
ROUTE NO.	SEC.	COUNTY	TOTAL SHEETS	SHEET NO.
194	35	WINNEBAGO	26	9
STA.		TO STA.		PROJ.
FED. ROAD DIST. NO. 7 ILLINOIS				



NOTE
FOR DIMENSIONS NOT
SHOWN SEE PILE PLAN-ABUT. 144
SHEET # 7.

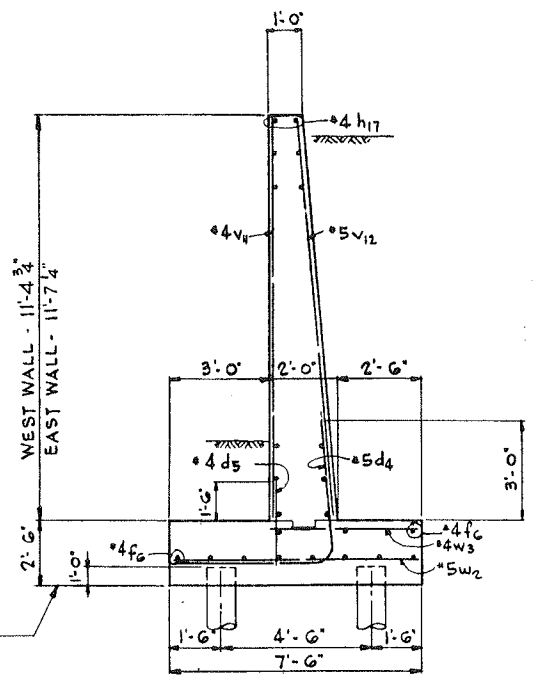
PILE PLAN - ABUT. #2 & 3

PILE PLAN - RETAINING WALL



PILE CUT OFF
WEST WALL - EL. 700.10
EAST WALL - EL. 698.40

ELEVATION - RETAINING WALL



WEST WALL - EL. 699.10
EAST WALL - EL. 697.40

SECTION - RETAINING WALL

NOTES:
FOR REINFORCING SCHEDULES SEE SHTS. 194 & 20.
WORK THIS SH. WITH SHTS. 7 & 8.

ILLINOIS DIVISION OF HIGHWAYS	
ROCKFORD BYPASS	
F. A. ROUTE 194	
PROJECT	SECTION 3.B
WINNEBAGO COUNTY	
ABUTMENTS PART 3	
Designed By: E.S.	Drawn By: P.N.
Checked By: JDP	

FOR INFORMATION ONLY