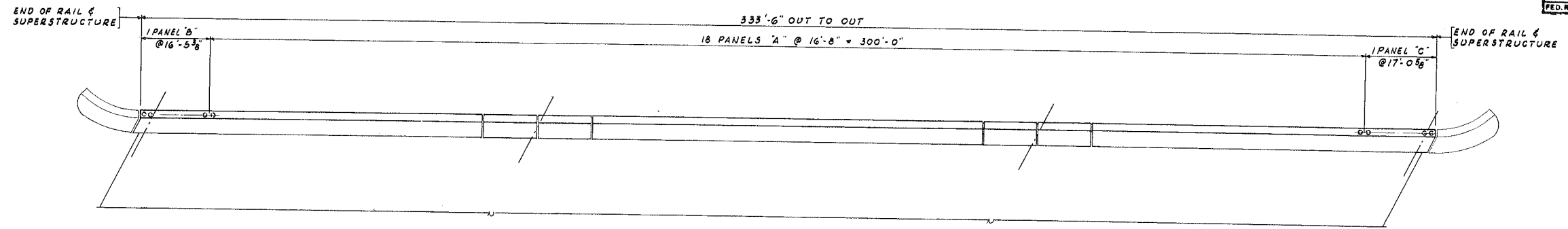
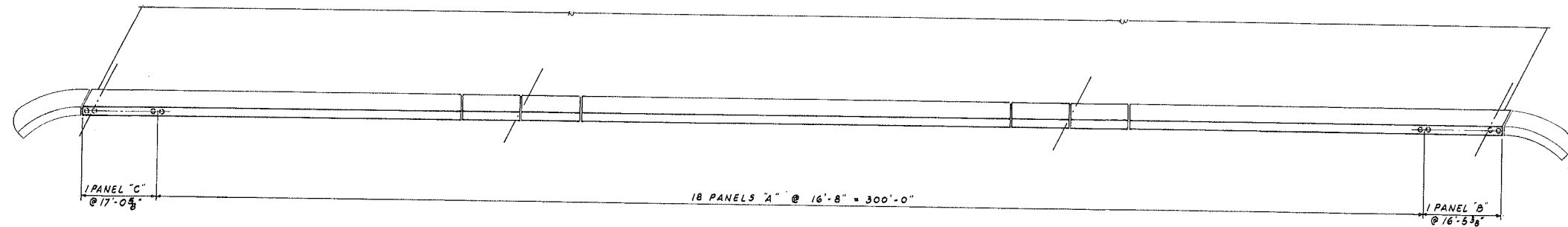


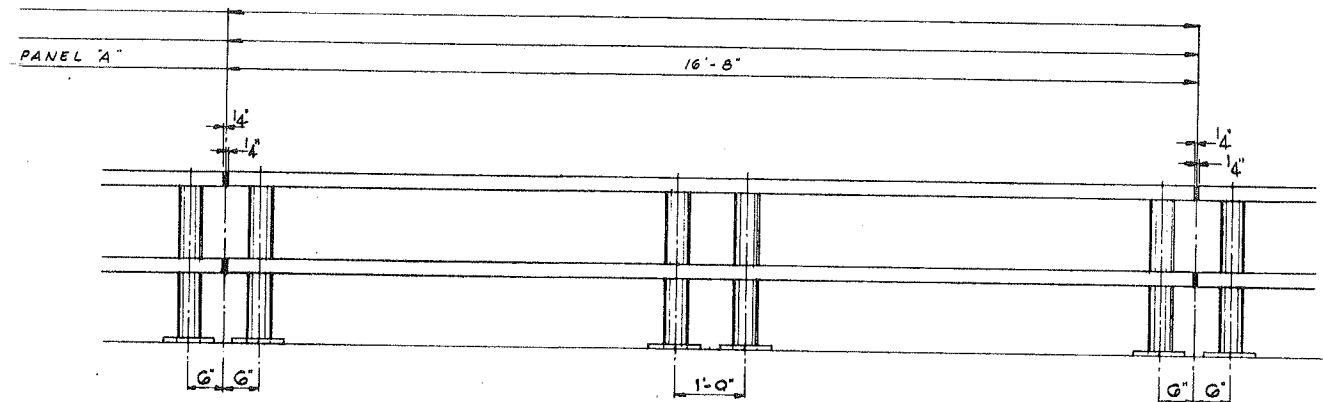
ROUTE NO.	SEC.	COUNTY	TOTAL SHEETS	SHEET NO.
FA 194	3B	WINNEBAGO	26	18
STA.	TO STA.		PROJ.	
FED. ROAD DIST. NO. 7	ILLINOIS			



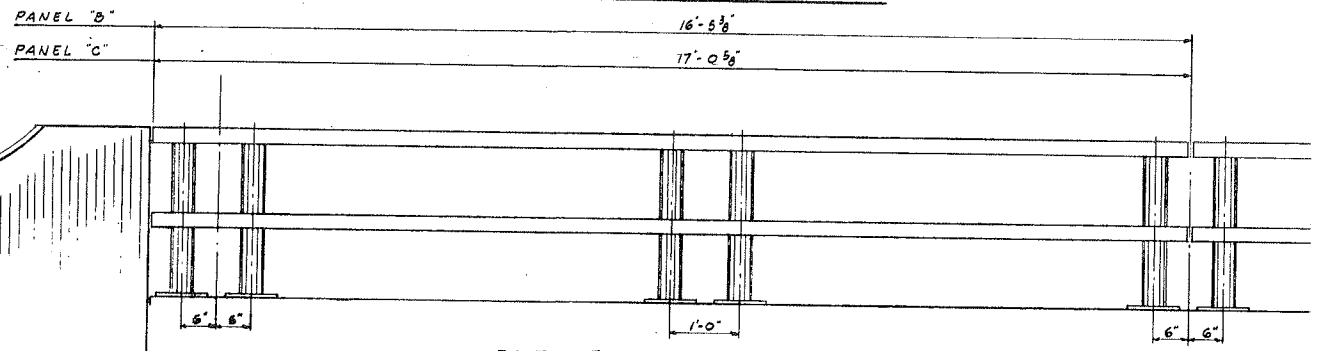
PLAN - NORTH RAIL



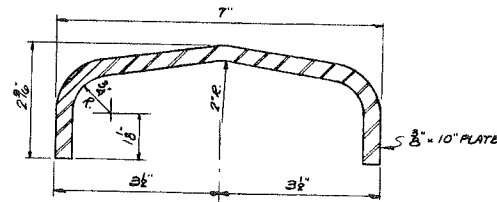
PLAN - SOUTH RAIL



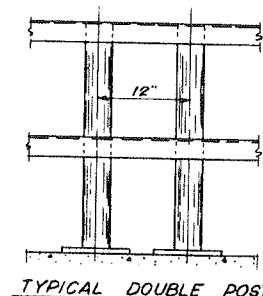
ELEVATION - TYR PANEL



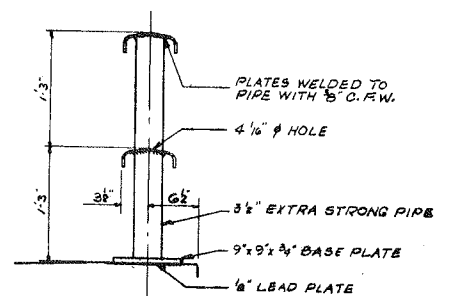
ELEVATION - TYR END PANEL



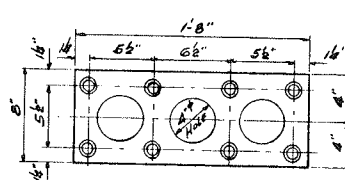
DETAIL OF RAIL



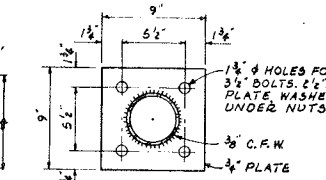
TYPICAL DOUBLE POST



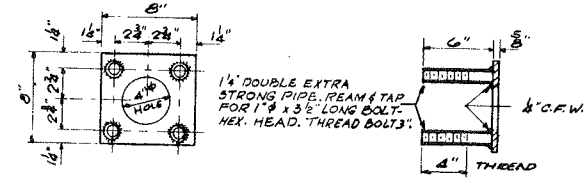
TYPICAL CROSS SECTION



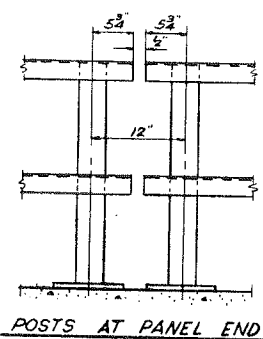
ANCHOR DEVICE AT DOUBLE POSTS



BASE PLATE ALL POSTS - SUPERSTRUCTURE



ANCHOR DEVICE AT SINGLE POST



POSTS AT PANEL END

Provide 2 shim plates 9" x 9" x 1/8" & 1 shim plate 9" x 9" x 1/8" for 50% of rail posts in order to obtain vertical alignment in the field. Holes in shim plates to match base plate.

FOR ONE BRIDGE ONLY
BILL OF MATERIAL

METAL HANDRAIL	LIN. FT.	665'-6"
----------------	----------	---------

ILLINOIS DIVISION OF HIGHWAYS
ROCKFORD BYPASS
F. A. ROUTE 194
PROJECT _____ SECTION 3B
WINNEBAGO COUNTY

HANDRAIL DETAILS

FOR INFORMATION ONLY