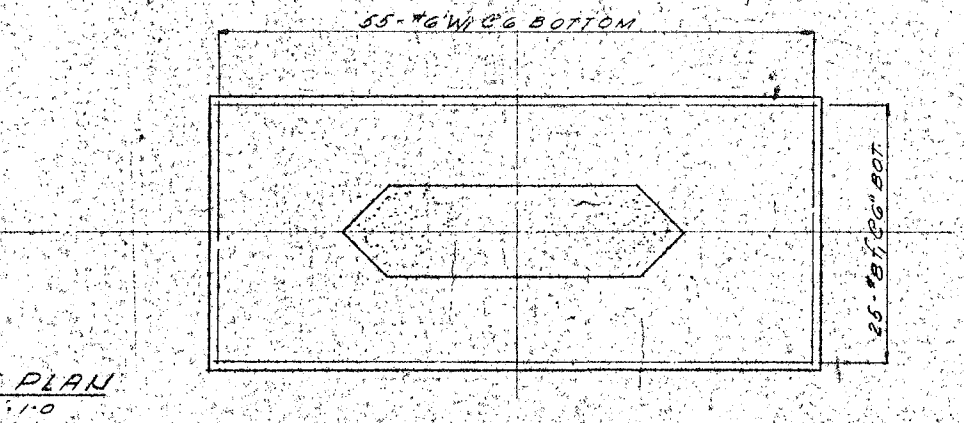
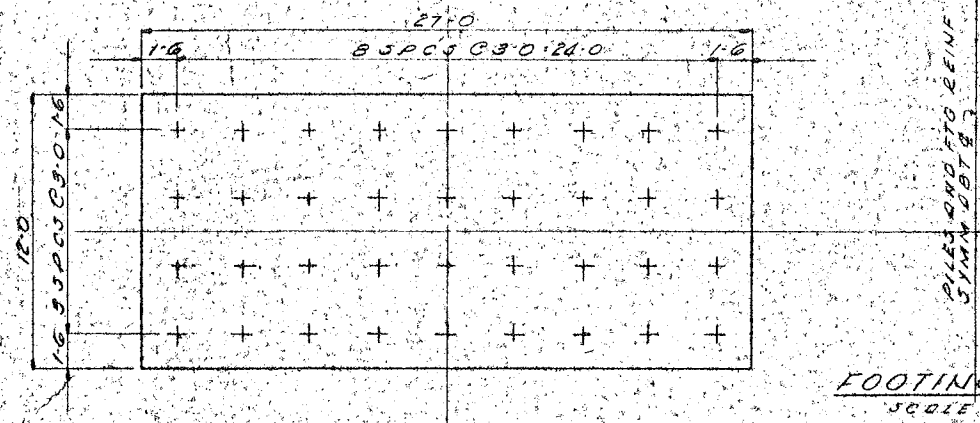
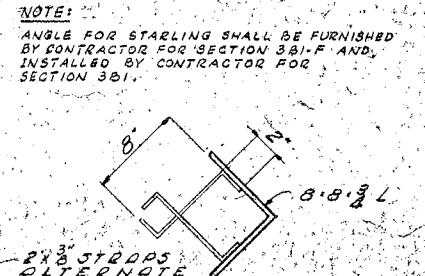
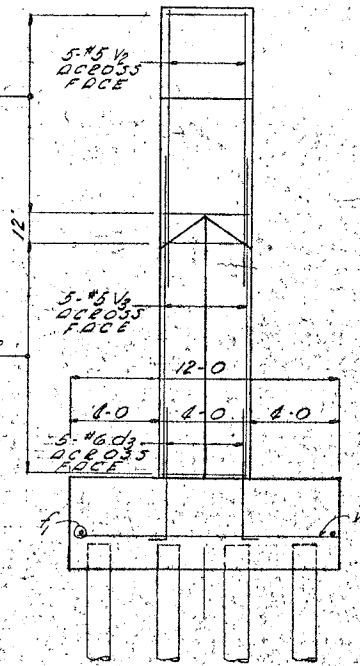
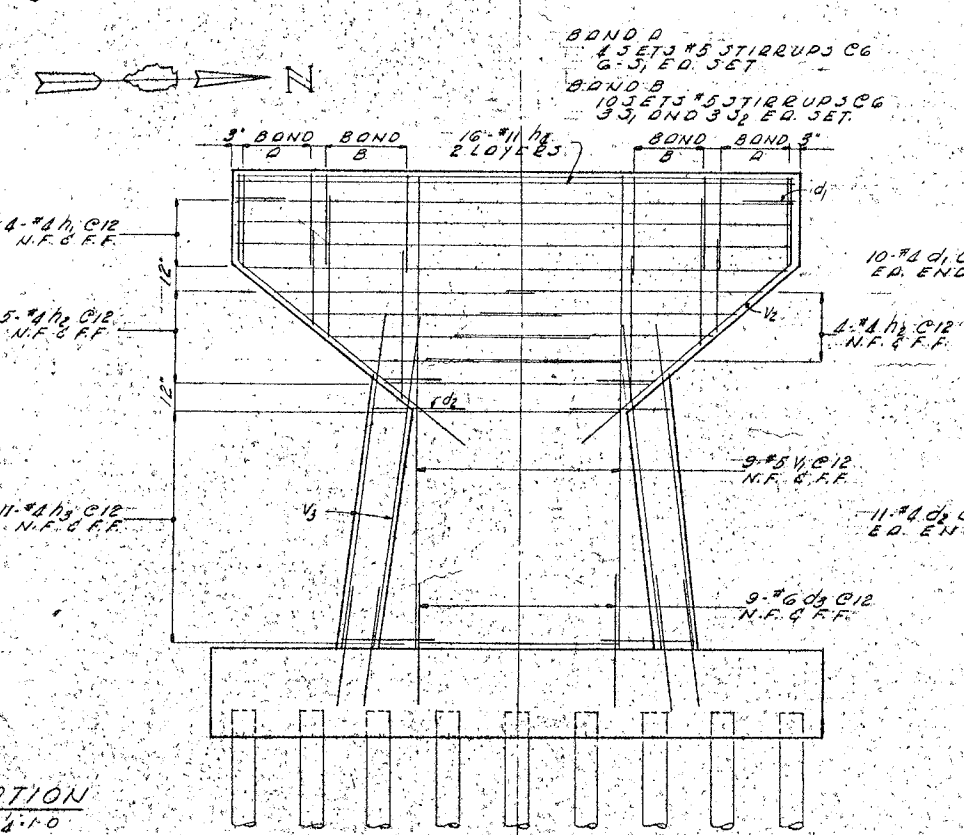
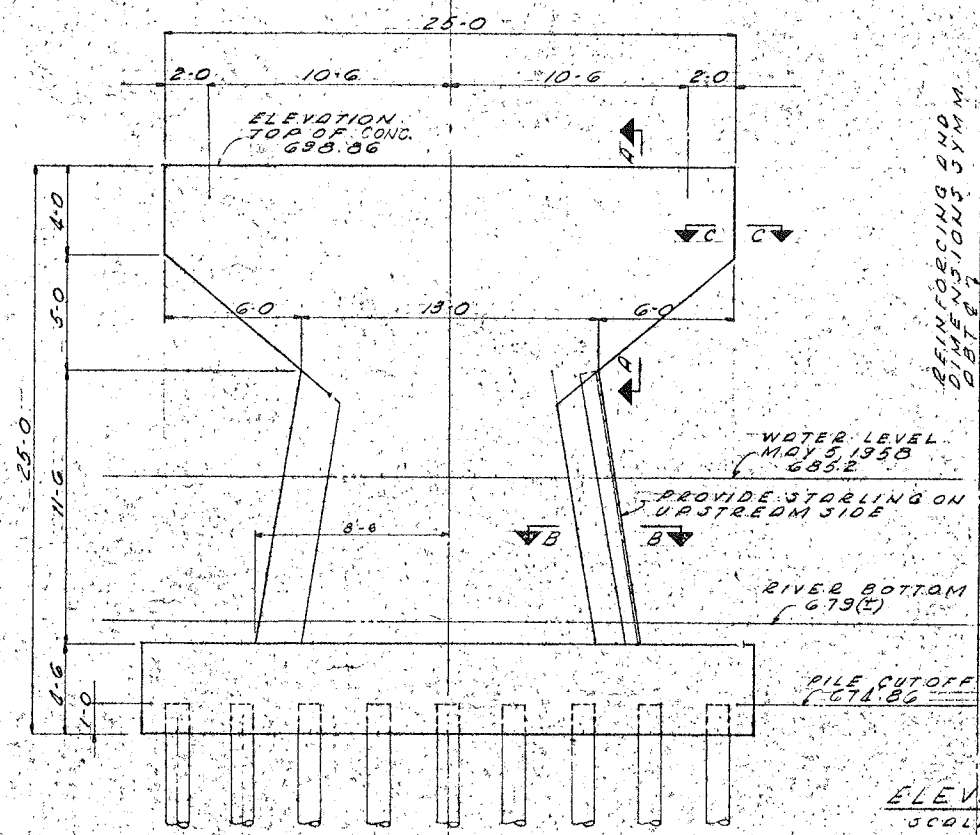
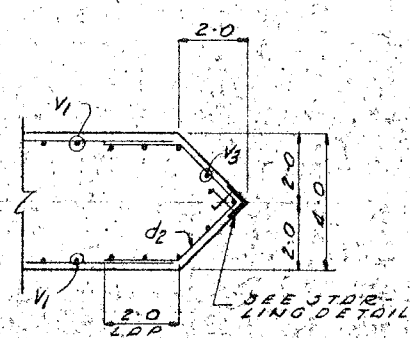
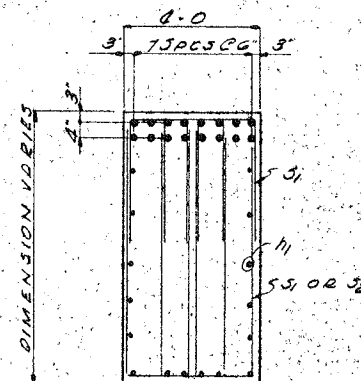
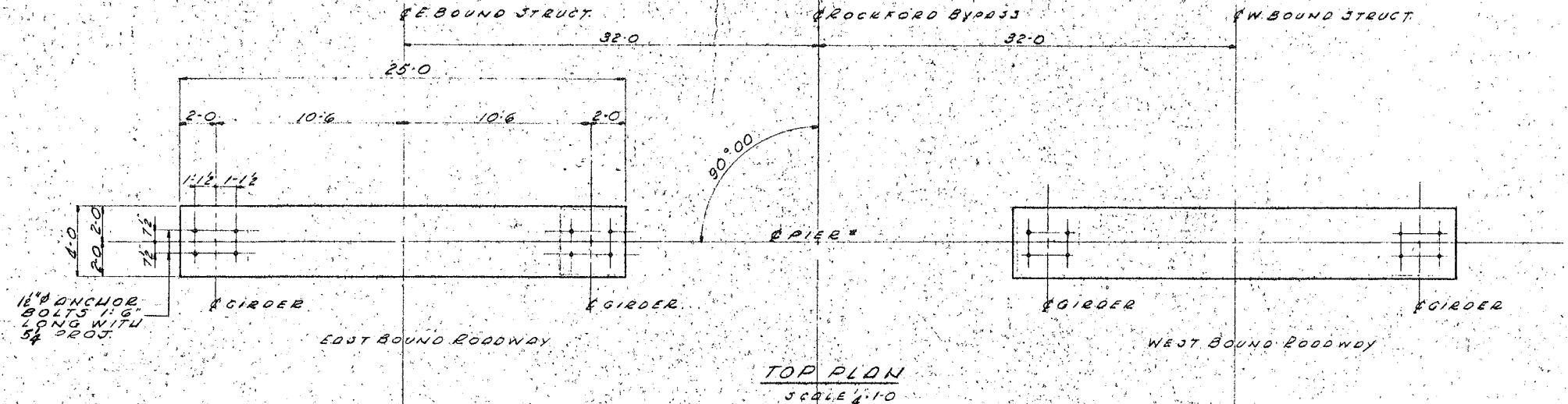
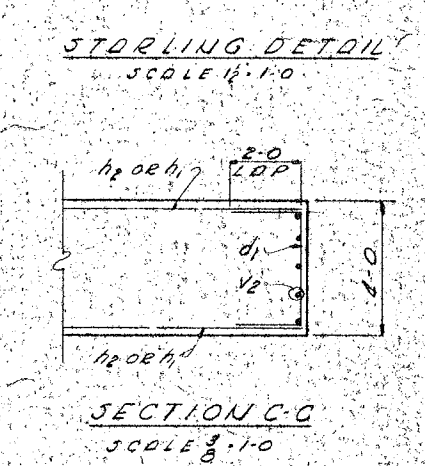


ROUTE NO.	SEC.	COUNTY	TOTAL SHEETS	SHEET NO.
F.A. 194	3B1	WINNEBAGO	23	E
STA. TO STA.		FED. ROAD DIST. NO. 7 ILLINOIS PROJ. U 284		



QUANTITIES FOR 2 PIERS

ITEM	UNIT	TOTAL
CROSS CONC. CY		208.2
REINFORCING LB		16,886
CONC. PILES LF		4,260
CONC. TEST PILES EA		1



PILE DATA
30 TON CONCRETE PILES
EST LENGTH 60 FT
NUMBER REQ 72

NOTES
FOR GENERAL NOTES
SEE SHEET 3
REINFORCING SCHEDULE
SEE SHEET 13 & 19

ILLINOIS DIVISION OF HIGHWAYS
ROCKFORD BYPASS
F. A. ROUTE 194
PROJECT U 284 SECTION 3B1
WINNEBAGO COUNTY
PIER No 1

FOR INFORMATION ONLY