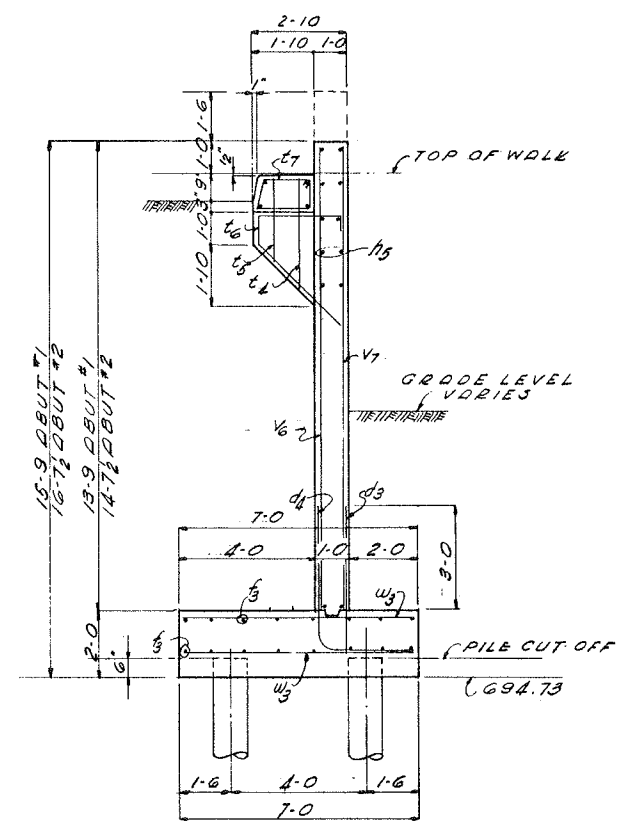
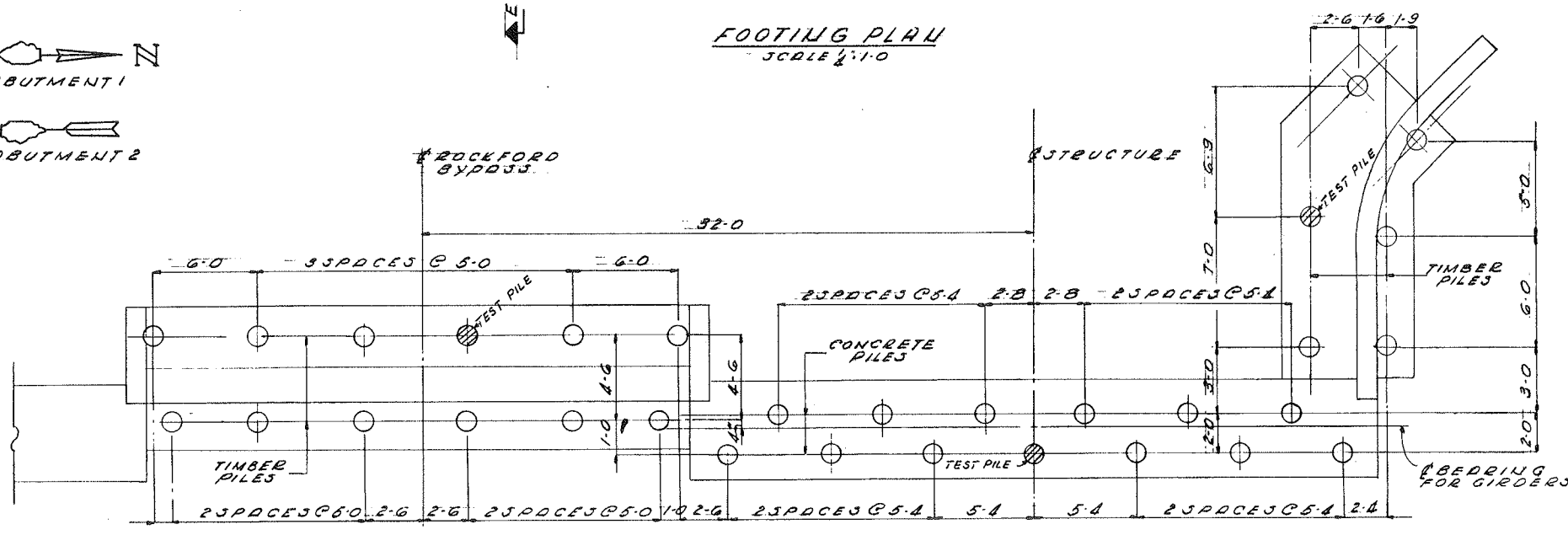
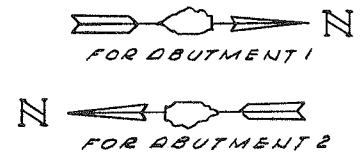


FOOTING PLAN  
SCALE 1/4"=1'-0"



SECTION F-F  
SCALE 3/8"=1'-0"



PILE PLAN  
SCALE 1/4"=1'-0"

QUANTITIES FOR ALL ABUTS. & WALLS

ITEM	UNIT	TOTAL
CONCRETE CLASS C.Y.		333
REINFORCING	LB3	32,134
CONCRETE PILES	L.F.	3060
TIMBER PILES (30)	L.F.	1380
TEST PILES (CONC)	EA.	1
CREOSOTED TIMBER TEST PILE	EA.	2

NOTES:  
FOR REINFORCING SCHEDULE SEE SHEETS 18 AND 19  
FOR GENERAL NOTES SEE SHEET 2  
WORK THIS SHEET WITH SHEET 7

PILE DATA

ABUTMENT  
30 TON CONCRETE PILES  
EST. LENGTH 60 FT  
NUMBER REQ 52 (INCL. (1) TEST PILE)

WING WALLS  
15 TON CREOSOTED PILES  
EST. LENGTH 30'  
NUMBER REQ 24 (INCL. (1) TEST PILE)

WALL BETWEEN ABUTMENTS  
15 TON CREOSOTED PILES  
EST. LENGTH 30'  
NUMBER REQ 24 (INCL. (1) TEST PILE)

ILLINOIS DIVISION OF HIGHWAYS  
ROCKFORD BYPASS

F. A. ROUTE 194  
PROJECT \_\_\_\_\_ SECTION **3B1**  
WINNEBAGO COUNTY

**ABUTMENT PART 2**

Designed By: E.S. Drawn By: E.S. Checked By: \_\_\_\_\_

**FOR INFORMATION ONLY**