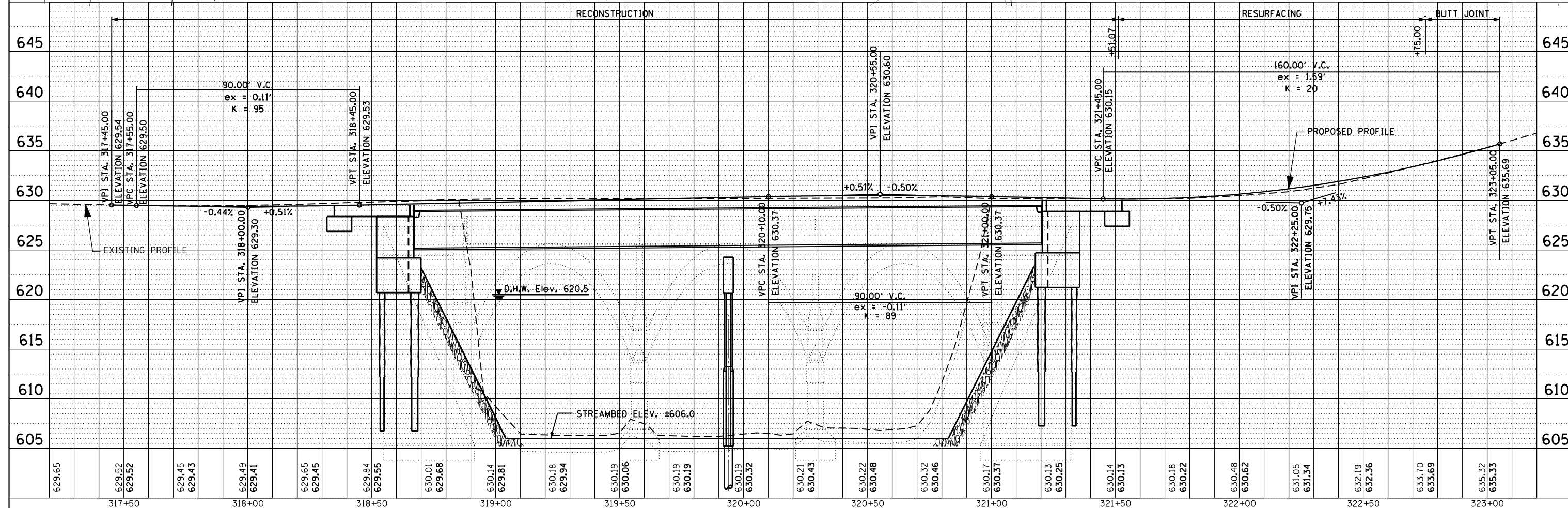
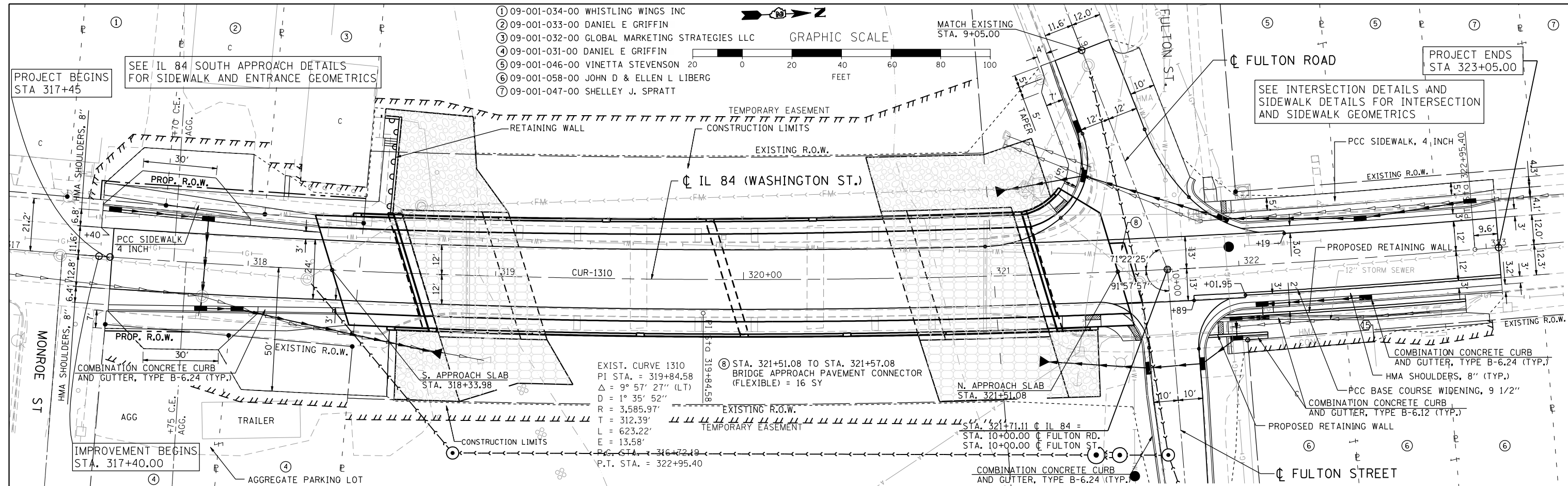
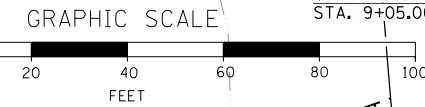


PLAN	SURVEYED	BY	DATE
	PLOTTED		
	CHECKED		
	AT		
	FILE NAME		
	NO.		

PROFILE	SURVEYED	BY	DATE
	GRADES CHECKED		
	STRUCTURE NOTATIONS CHKD		
	NO.		

- ① 09-001-034-00 WHISTLING WINGS INC
- ② 09-001-033-00 DANIEL E GRIFFIN
- ③ 09-001-032-00 GLOBAL MARKETING STRATEGIES LLC
- ④ 09-001-031-00 DANIEL E GRIFFIN
- ⑤ 09-001-046-00 VINETTA STEVENSON
- ⑥ 09-001-058-00 JOHN D & ELLEN L LIBERG
- ⑦ 09-001-047-00 SHELLEY J. SPRATT



Design firm
no. 184001036

engineers • planners • land surveyors

USER NAME = gjameson	DESIGNED -	REVISED -
FILE NAME = Z64E08-SHT-PP.20a.dgn	CHECKED -	REVISED -
PLOT SCALE = 40,0000' / IN.	DRAWN -	REVISED -
PLOT DATE = 8/5/2013	CHECKED -	REVISED -

**STATE OF ILLINOIS
DEPARTMENT OF TRANSPORTATION**

**PLAN AND PROFILE - IL 84
IL ROUTE 84 OVER APPLE RIVER**

SCALE: 1" = 20' SHEET NO. 1 OF 1 SHEETS STA. 317+40.00 TO STA. 323+05.00

F.A.U. RTE.	SECTION	COUNTY	TOTAL SHEETS	SHEET NO.
308	103BR-4	JO DAVISS	159	28
CONTRACT NO.			ILLINOIS FED. AID PROJECT	