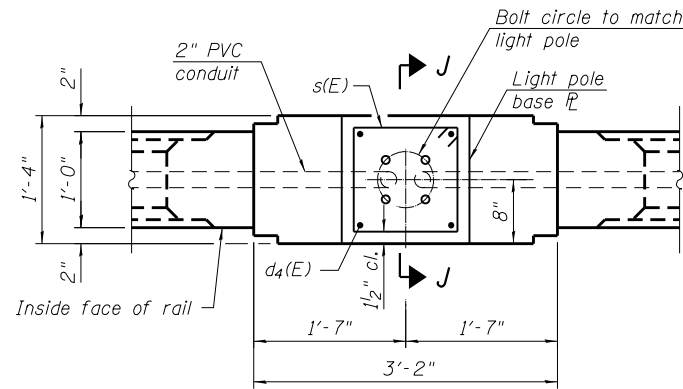


SECTION J-J

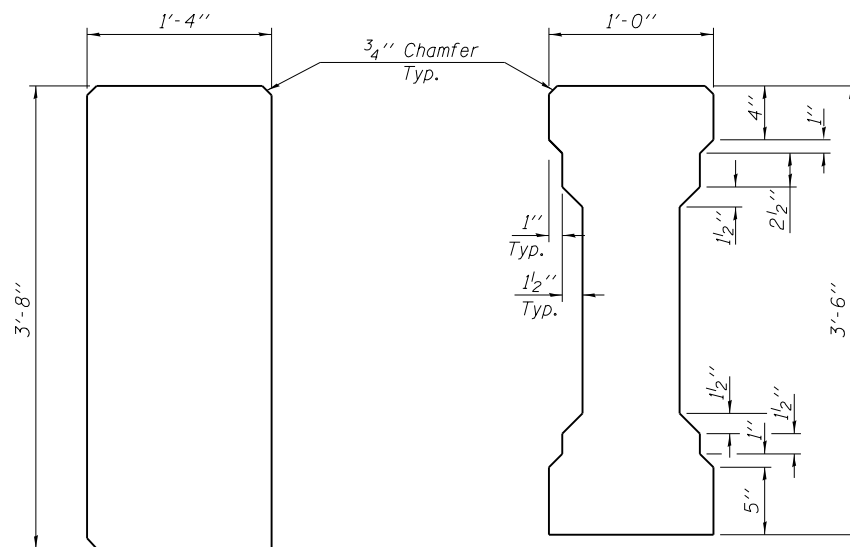


PLAN AT PILASTERS

(Showing light pole attachment details at Intermediate and Pier Pilasters.)
(End Pilasters similar.)

Note:

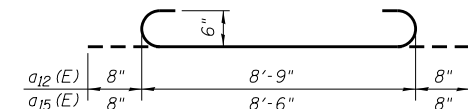
The Contractor shall verify all details with the Electrical Plans, By Others. 2" φ PVC conduit and other electrical components depicted are included with the cost of Conduit Embedded in Structure. 2" φ, PVC. See Roadway Plans.



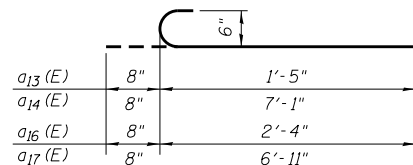
PIER PILASTER JOINT

SPAN PILASTER JOINT

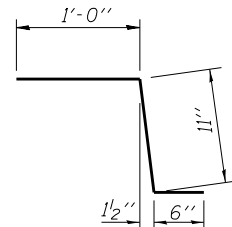
ALUMINUM JOINT DETAILS



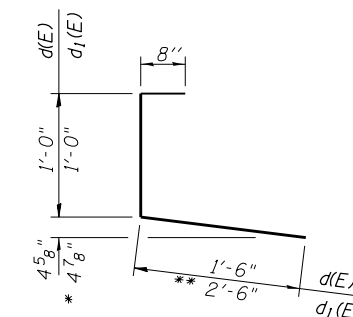
BARS a₁₂(E) AND a₁₅(E)



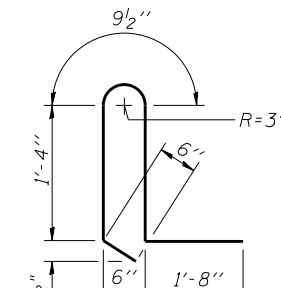
BARS a₁₃(E), a₁₄(E), a₁₆(E) AND a₁₇(E)



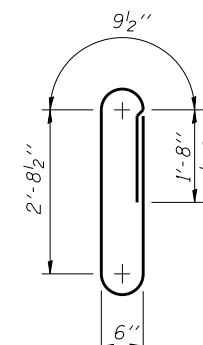
BAR c(E)



BARS d(E) and d₁(E)

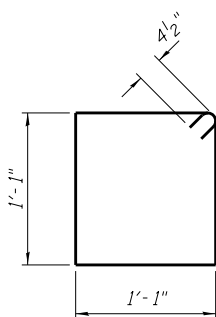


BAR d₂(E)

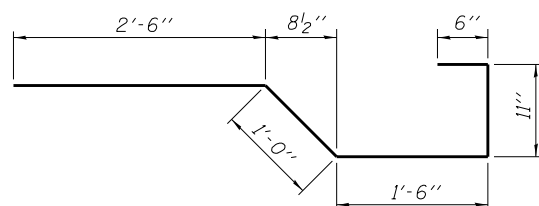


BAR d₃(E)

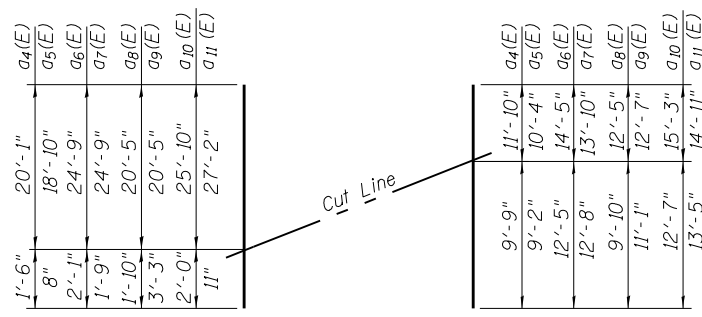
* Varies from 3 1/2" to 4 7/8". Order as detailed and bend to fit in field.
** Varies from 6" to 2'-6". Order as detailed and cut to fit in field.



BAR s(E)

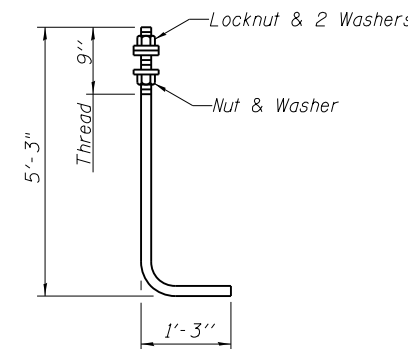


BAR x(E)



BARS a₄(E) THUR a₁₁(E)

(Field Cutting Diagram)



ANCHOR ROD

Diameter as specified for light poles.
(ASTM F 1554 Grade 105)
Full length Hot Dipped Galvanized.

SUPERSTRUCTURE
BILL OF MATERIAL

Bar	No.	Size	Length	Shape
a(E)	593	#5	20'-9"	—
a ₁ (E)	349	#5	19'-11"	—
a ₂ (E)	591	#5	27'-2"	—
a ₃ (E)	349	#5	25'-5"	—
a ₄ (E)	5	#5	21'-7"	—
a ₅ (E)	8	#5	19'-6"	—
a ₆ (E)	6	#5	26'-10"	—
a ₇ (E)	10	#5	26'-6"	—
a ₈ (E)	4	#5	22'-3"	—
a ₉ (E)	6	#5	23'-8"	—
a ₁₀ (E)	5	#5	27'-10"	—
a ₁₁ (E)	9	#5	28'-3"	—
a ₁₂ (E)	12	#6	10'-1"	—
a ₁₃ (E)	3	#6	2'-1"	—
a ₁₄ (E)	3	#6	7'-9"	—
a ₁₅ (E)	12	#6	9'-10"	—
a ₁₆ (E)	3	#6	2'-0"	—
a ₁₇ (E)	3	#6	7'-7"	—
a ₁₈ (E)	1	#6	19'-5"	—
a ₁₉ (E)	1	#6	25'-0"	—
a ₂₀ (E)	1	#6	19'-0"	—
a ₂₁ (E)	1	#6	24'-6"	—
a ₂₂ (E)	4	#6	21'-11"	—
a ₂₃ (E)	4	#6	26'-6"	—
a ₂₄ (E)	4	#6	21'-6"	—
a ₂₅ (E)	4	#6	28'-1"	—
a ₂₆ (E)	32	#5	1'-6"	—
b(E)	660	#5	28'-4"	—
b ₁ (E)	517	#5	26'-0"	—
b ₂ (E)	144	#6	26'-10"	—
c(E)	508	#5	2'-5"	—
c ₁ (E)	514	#5	5'-10"	—
d(E)	254	#5	3'-2"	—
d ₁ (E)	254	#5	4'-2"	—
d ₂ (E)	554	#5	5'-7 1/2"	—
x(E)	82	#5	6'-5"	—
Concrete Superstructure		Cu. Yds.		412.0
Reinforcement Bars, Epoxy Coated		Pound		98,150
Concrete Bridge Rail, Sidewalk Mounted		Foot		507

BAR LIST PER RAIL

Bar	No.	Size	Length	Shape
d ₃ (E)	388	#5	8'-8"	—
d ₄ (E)	16	#4	3'-5"	—
e(E)	32	#7	30'-1"	—
e ₁ (E)	4	#7	18'-8"	—
e ₂ (E)	32	#5	29'-0"	—
e ₃ (E)	4	#5	18'-8"	—
s(E)	20	#4	5'-1"	—

For Information only. Does not include rail on abutment wingwalls. See sheets 33 and 36 of 60.