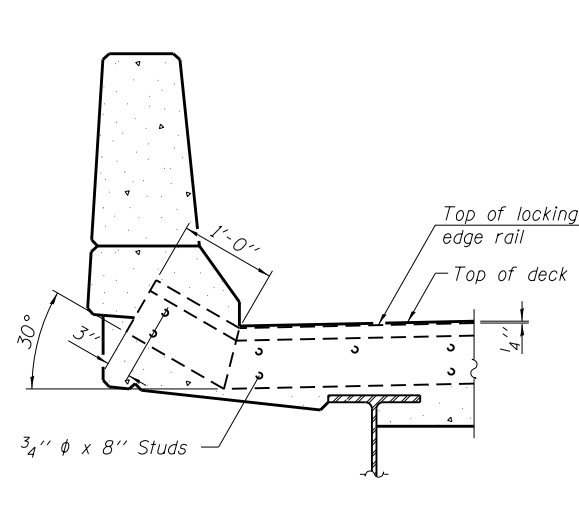
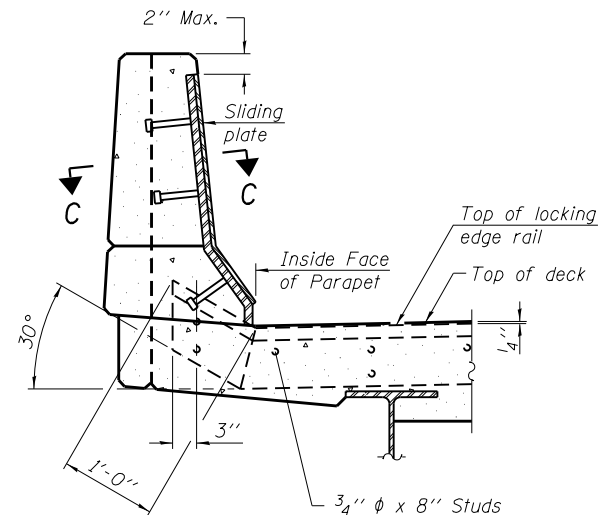


**TYPICAL END TREATMENT AT SIDEWALK OR MEDIAN**

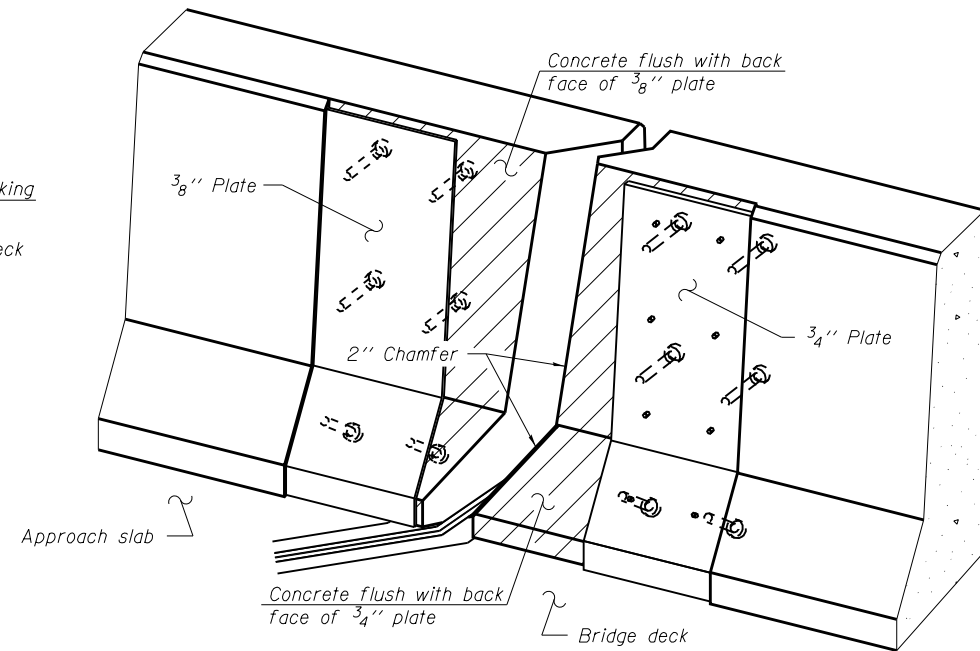
Shorter plates with a single row of studs at 12" cts. may be necessary on medians which are shallower than 9". See manufacturer's recommendation.



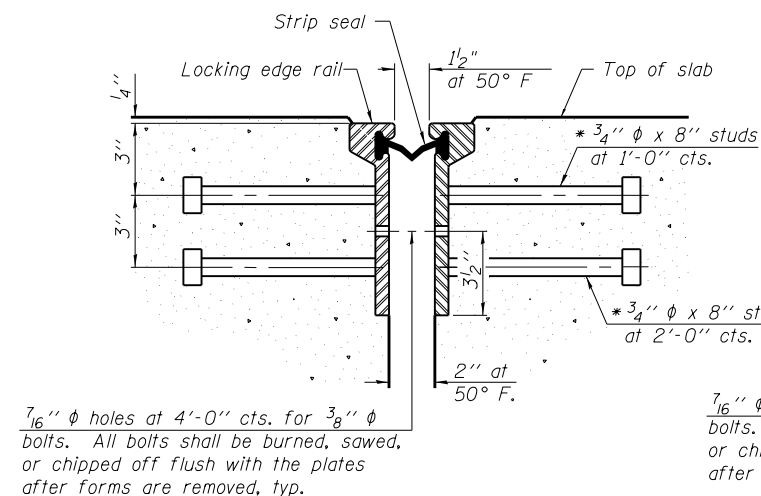
**SECTION A-A**



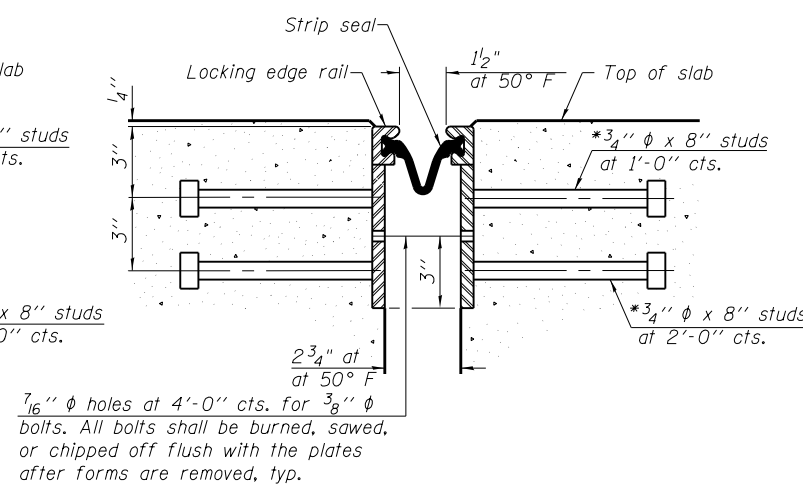
**SECTION B-B**



**TRIMETRIC VIEW (Showing back plates only)**



**SECTION THRU ROLLED RAIL JOINT**



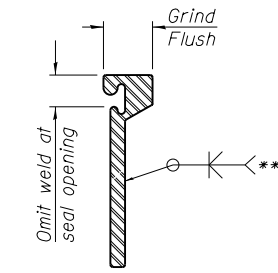
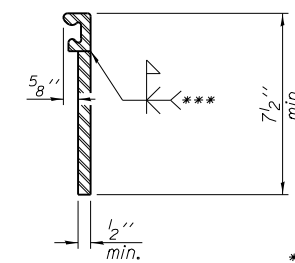
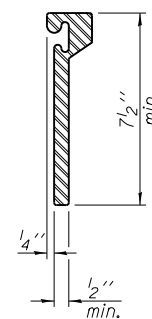
**SECTION THRU WELDED RAIL JOINT**

7/16"  $\phi$  holes at 4'-0" cts. for 3/8"  $\phi$  bolts. All bolts shall be burned, sawed, or chipped off flush with the plates after forms are removed, typ.

7/16"  $\phi$  holes at 4'-0" cts. for 3/8"  $\phi$  bolts. All bolts shall be burned, sawed, or chipped off flush with the plates after forms are removed, typ.

**ROLLED EXTRUDED RAIL**

**WELDED RAIL**



\*\*\* Back gouge not required if complete joint penetration is verified by mock-up.

**LOCKING EDGE RAIL SPLICE**

The inside of the locking edge rail groove shall be free of weld residue. Rolled rail shown, welded rail similar.

\* Granular or solid flux filled headed studs conforming to Article 1006.32 of the Std. Specs., automatically end welded.

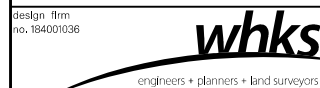
**LOCKING EDGE RAILS**

**BILL OF MATERIAL**

Item	Unit	Total
Preformed Joint Strip Seal	Foot	101

EJ-SSJ

1-27-12



USER NAME = dheberling	DESIGNED - BRD	REVISED
FILE NAME = 0430028-64E08.dgn	CHECKED - SBC	REVISED
PLOT SCALE = 0:2.00000 '1' / in.	DRAWN - DLH	REVISED
PLOT DATE = 8/5/2013	CHECKED - BRD	REVISED

**STATE OF ILLINOIS  
DEPARTMENT OF TRANSPORTATION**

**PREFORMED JOINT STRIP SEAL  
STRUCTURE NO. 043-0080**

SHEET NO. 26 OF 60 SHEETS

F.A.P. RTE.	SECTION	COUNTY	TOTAL SHEETS	SHEET NO.
308	103BR-4	JoDAVISS	159	76
CONTRACT NO. 64E08				

ILLINOIS FED. AID PROJECT