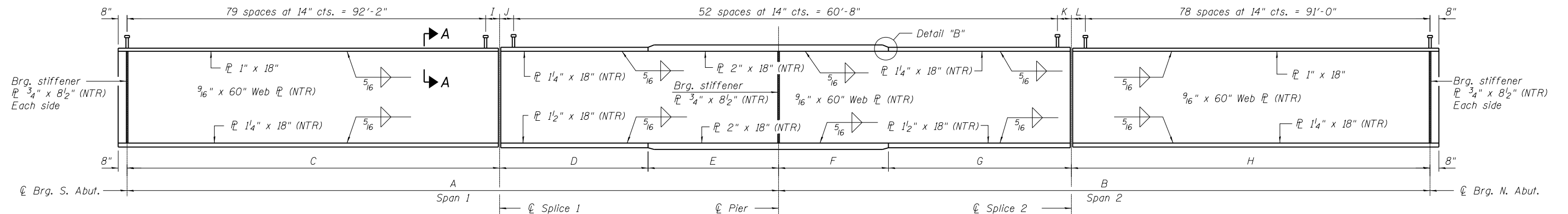


* Pier cross frames are along the skew.
See details on sheet 29 of 60.

PLAN



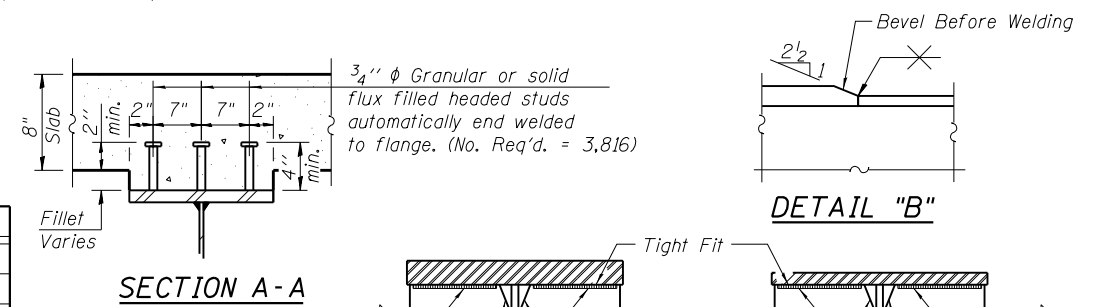
GIRDER ELEVATION

DIAPHRAGM SPACING

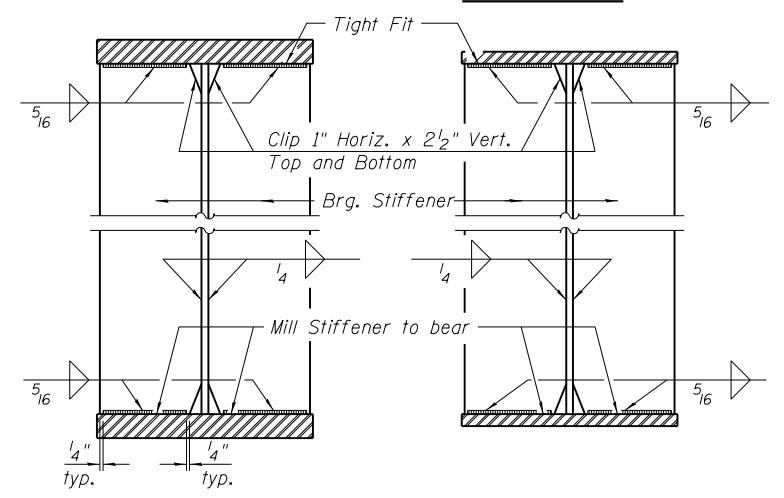
Girder	Location	DS1	DS2	DS3	DS4	DS5
1	East Face	24'-7 ¹⁵ / ₁₆ "	21'-11 ⁵ / ₈ "	13'-8 ¹ / ₁₆ "	16'-3 ⁵ / ₁₆ "	20'-8 ¹ / ₂ "
2	West Face	21'-9 ¹ / ₄ "	22'-0 ¹ / ₄ "	16'-4"	13'-8 ¹ / ₂ "	23'-0 ⁵ / ₈ "
2	East Face	24'-7 ³ / ₁₆ "	21'-11 ⁹ / ₁₆ "	13'-8 ¹ / ₁₆ "	16'-3 ⁷ / ₁₆ "	20'-8 ¹ / ₂ "
3	West Face	21'-9 ³ / ₁₆ "	22'-0 ³ / ₁₆ "	16'-3 ³ / ₄ "	13'-8 ¹ / ₂ "	23'-0 ¹ / ₂ "
3	East Face	24'-7 ¹¹ / ₁₆ "	21'-11 ² / ₁₆ "	13'-8 ¹ / ₁₆ "	16'-3 ³ / ₁₆ "	20'-8 ¹ / ₂ "
4	West Face	21'-9 ³ / ₁₆ "	22'-0 ⁸ / ₁₆ "	16'-3 ⁵ / ₈ "	13'-8 ¹ / ₂ "	23'-0 ⁷ / ₁₆ "
4	East Face	24'-7 ⁹ / ₁₆ "	21'-11 ⁷ / ₁₆ "	13'-8 ¹ / ₁₆ "	16'-3 ³ / ₁₆ "	20'-8 ⁷ / ₁₆ "
5	West Face	21'-9 ³ / ₁₆ "	22'-0 ¹ / ₁₆ "	16'-3 ⁵ / ₈ "	13'-8 ¹ / ₂ "	23'-0 ¹ / ₄ "
5	East Face	24'-7 ⁷ / ₁₆ "	21'-11 ³ / ₁₆ "	13'-8 ¹ / ₁₆ "	16'-3 ¹ / ₁₆ "	20'-8 ⁷ / ₁₆ "
6	West Face	21'-9 ⁸ / ₁₆ "	22'-0"	16'-3 ¹ / ₂ "	13'-8 ¹ / ₂ "	23'-0 ³ / ₁₆ "

GIRDER DIMENSIONS

Girder	Radius	A	B	C	D	E	F	G	H
1	3564'-0 ⁵ / ₈ "	126'-2 ⁹ / ₁₆ "	124'-10 ¹ / ₄ "	94'-2 ³ / ₁₆ "	18'-0"	14'-0 ³ / ₈ "	13'-11 ⁵ / ₈ "	18'-0"	92'-10 ⁵ / ₈ "
2	3572'-6 ⁵ / ₈ "	126'-2 ³ / ₁₆ "	124'-9 ¹⁵ / ₁₆ "	94'-1 ¹³ / ₁₆ "	18'-0"	14'-0 ³ / ₈ "	13'-11 ⁵ / ₈ "	18'-0"	92'-10 ⁵ / ₁₆ "
3	3581'-0 ⁵ / ₈ "	126'-1 ¹³ / ₁₆ "	124'-9 ⁵ / ₈ "	94'-1 ⁹ / ₁₆ "	18'-0"	14'-0 ⁴ / ₁₆ "	13'-11 ³ / ₄ "	18'-0"	92'-9 ⁷ / ₈ "
4	3589'-6 ⁵ / ₈ "	126'-1 ⁷ / ₁₆ "	124'-9 ⁵ / ₈ "	94'-1 ¹³ / ₁₆ "	18'-0"	14'-0 ⁴ / ₁₆ "	13'-11 ³ / ₄ "	18'-0"	92'-9 ⁹ / ₁₆ "
5	3598'-0 ⁵ / ₈ "	126'-1 ¹ / ₁₆ "	124'-9"	94'-1"	18'-0"	14'-0 ¹ / ₁₆ "	13'-11 ¹⁵ / ₁₆ "	18'-0"	92'-9 ¹ / ₁₆ "
6	3606'-6 ⁵ / ₈ "	126'-0 ¹¹ / ₁₆ "	124'-8 ³ / ₄ "	94'-0 ³ / ₄ "	18'-0"	13'-11 ¹⁵ / ₁₆ "	14'-0 ¹ / ₁₆ "	18'-0"	92'-8 ¹¹ / ₁₆ "



SECTION A-A



SECTION AT PIER

SECTION AT ABUTMENT

SHEAR STUD LAYOUT DIMENSIONS

Girder	I	J	K	L
1	2'-0 ³ / ₁₆ "	1'-8"	1'-8"	1'-10 ⁵ / ₈ "
2	1'-11 ¹³ / ₁₆ "	1'-8"	1'-8"	1'-10 ⁵ / ₁₆ "
3	1'-11 ⁹ / ₁₆ "	1'-8"	1'-8"	1'-9 ⁷ / ₈ "
4	1'-11 ³ / ₁₆ "	1'-8"	1'-8"	1'-9 ⁹ / ₁₆ "
5	1'-11"	1'-8"	1'-8"	1'-9 ¹ / ₁₆ "
6	1'-10 ³ / ₄ "	1'-8"	1'-8"	1'-8 ¹ / ₁₆ "

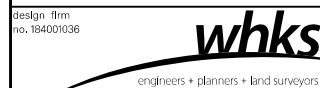
TOP OF WEB ELEVATIONS *

	Girder 1	Girder 2	Girder 3	Girder 4	Girder 5	Girder 6
☉ Brg. S. Abut.	628.34	628.52	628.71	628.75	628.59	628.44
☉ Splice 1	628.72	628.91	629.10	629.14	628.98	628.82
☉ Brg. Pier	628.89	629.07	629.25	629.29	629.13	628.97
☉ Splice 2	629.06	629.24	629.41	629.44	629.28	629.12
☉ Brg. N. Abut.	629.04	629.20	629.36	629.38	629.20	629.01

* For fabrication only.

Notes:

All cross frames or diaphragms between beams or girders shall be installed with erection pins and bolts in accordance with the erection plan approved by the Engineer. Individual cross frames or diaphragms at supports may be temporarily disconnected to install bearing anchor rods.
Load carrying components designated "NTR" shall conform to the Impact Testing Requirement, Zone 2.
All structural steel plates shown shall be AASHTO M270, Grade 50.



USER NAME = dheber.ling
FILE NAME = 0430028-64E08.dgn
PLOT SCALE = 0:2.00000 '1' / in.
PLOT DATE = 9/26/2013

DESIGNED - BRD
CHECKED - SBC
DRAWN - DLH
CHECKED - BRD

REVISED
REVISED
REVISED
REVISED

STATE OF ILLINOIS
DEPARTMENT OF TRANSPORTATION

FRAMING PLAN
STRUCTURE NO. 043-0080

SHEET NO. 27 OF 60 SHEETS

F.A.P. RTE.	SECTION	COUNTY	TOTAL SHEETS	SHEET NO.
308	103BR-4	JoDAVISS	159	77

CONTRACT NO. 64E08

ILLINOIS FED. AID PROJECT