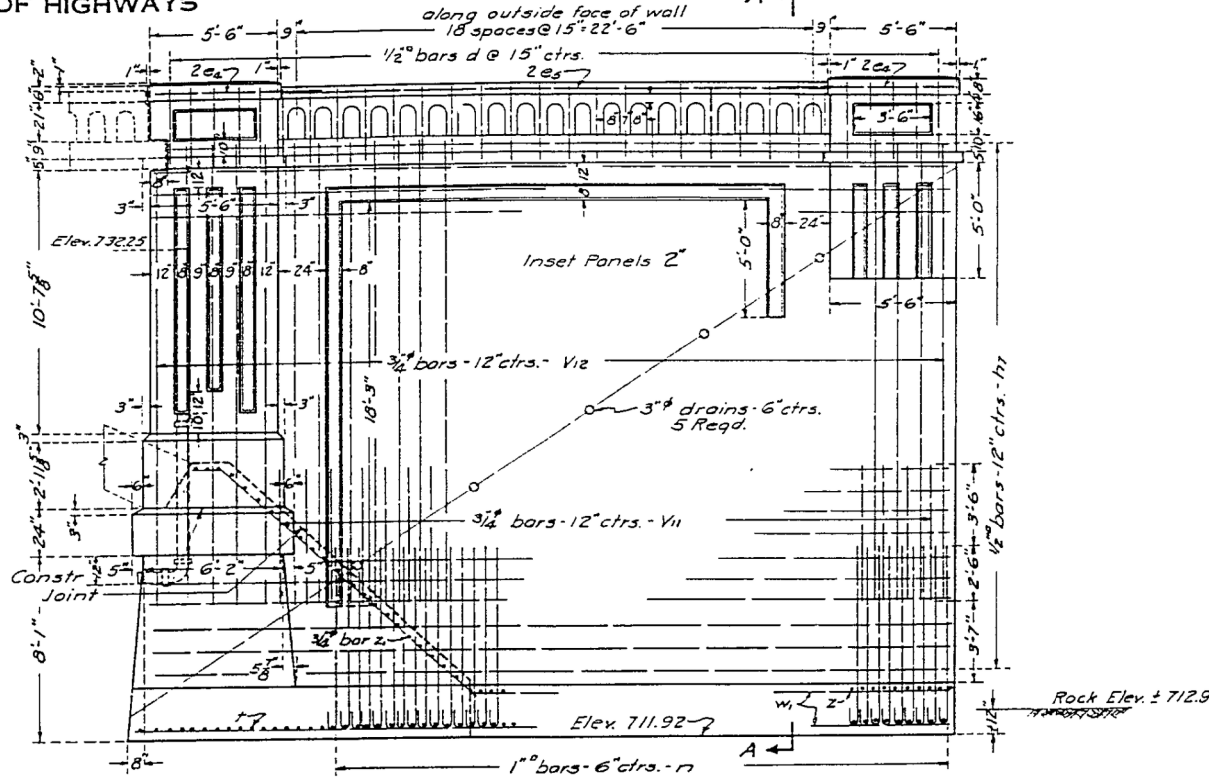


ELEVATION OF ABUTMENT



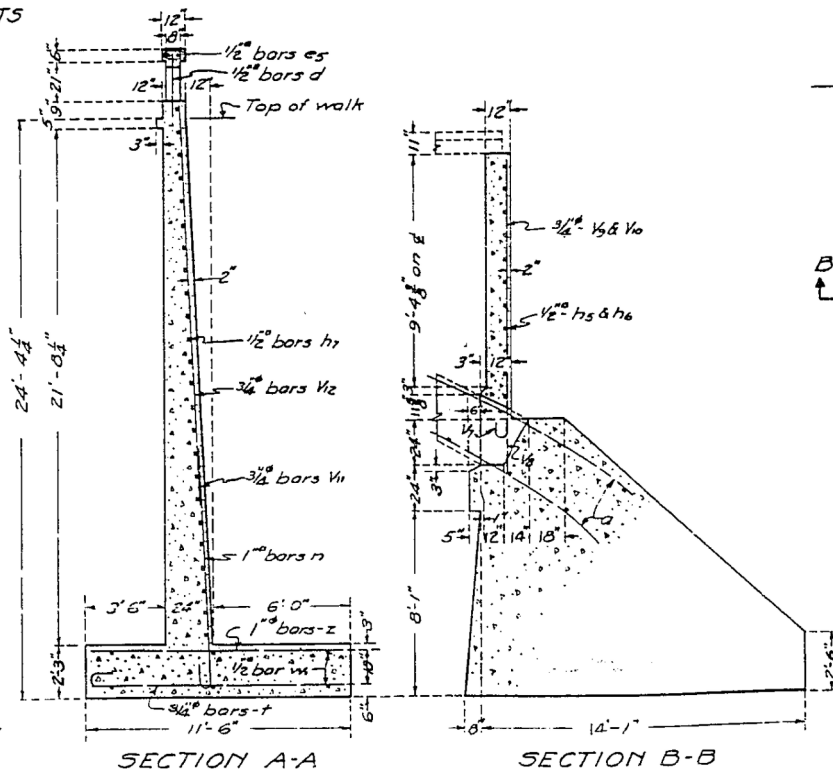
ELEVATION OF WING
Revolved parallel to $\frac{1}{2}$ of Abutment

BILL OF MATERIAL-TWO ABUTMENTS

Bar	No.	Size	Length
V7	80	3/4"	4'-6"
V8	60	"	5'-0"
V9	20	"	14'-3"
V10	52	"	13'-0"
V11	116	"	6'-0"
V12	140	"	19'-3"
h5	40	1/2"	21'-0"
h6	4	"	7'-0"
h7	184	"	19'-0"
n	216	1"	9'-3"
t	280	3/4"	12'-6"
z	124	1"	11'-3"
z1	96	3/4"	9'-0"
w1	48	1/2"	18'-6"
d	120	1/2"	3'-0"
ea	16	"	7'-0"
es	8	"	24'-0"

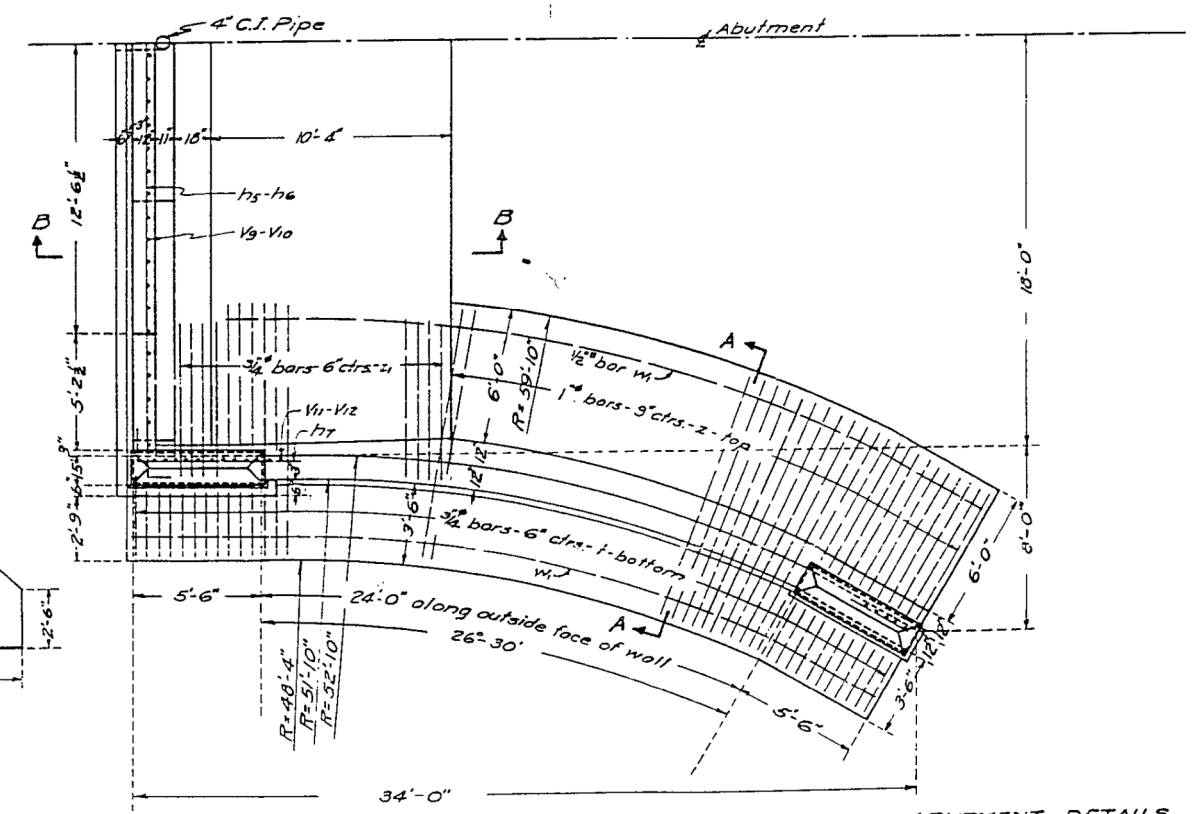
Hand Rail Concrete - Cu Yds. - 142
Class X Concrete - Cu Yds. - 637.5
Reinforcing Steel - Lbs. - 29,630
Rock Excavation - Cu Yds. - 85

Class X concrete shall be used throughout.
All reinforcing steel shall be wired securely in place before concrete is poured.



SECTION A-A

SECTION B-B



ABUTMENT DETAILS
HANOVER BRIDGE
S.B.I. ROUTE 80 SECTION 103-D
JO DAVIESS COUNTY
STATION 259+18

STANDARD	COMPUTED	- J. H. Williams	EXAMINED	- J. H. Williams	
	CHECKED	- J. H. Williams		BRIDGE ENGINEER	
	DRAWN	- J. H. Williams		PASSED	- J. H. Williams
	CHECKED	- J. H. Williams		ENGINEER OF DESIGN	
SPECIAL	ASSEMBLED	-	APPROVED	- E. Liberman	
	CHECKED	-	CHIEF HIGHWAY ENGINEER		

DESIGN FIRM	USER NAME = dheberling	DESIGNED -	REVISED -
FILE NAME = 0430028-64E08.dgn	CHECKED -	REVISED -	
PLOT SCALE = 0:2.00000 '1' / in.	DRAWN -	REVISED -	
PLOT DATE = 8/5/2013	CHECKED -	REVISED -	

STATE OF ILLINOIS
DEPARTMENT OF TRANSPORTATION

EXISTING PLANS
STRUCTURE NO. 043-0080

SHEET NO. 44 OF 60 SHEETS

F.A.P. RTE.	SECTION	COUNTY	TOTAL SHEETS	SHEET NO.
308	103BR-4	JO DAVIESS	159	94
CONTRACT NO. 64E08				
ILLINOIS FED. AID PROJECT				

FOR INFORMATION ONLY

