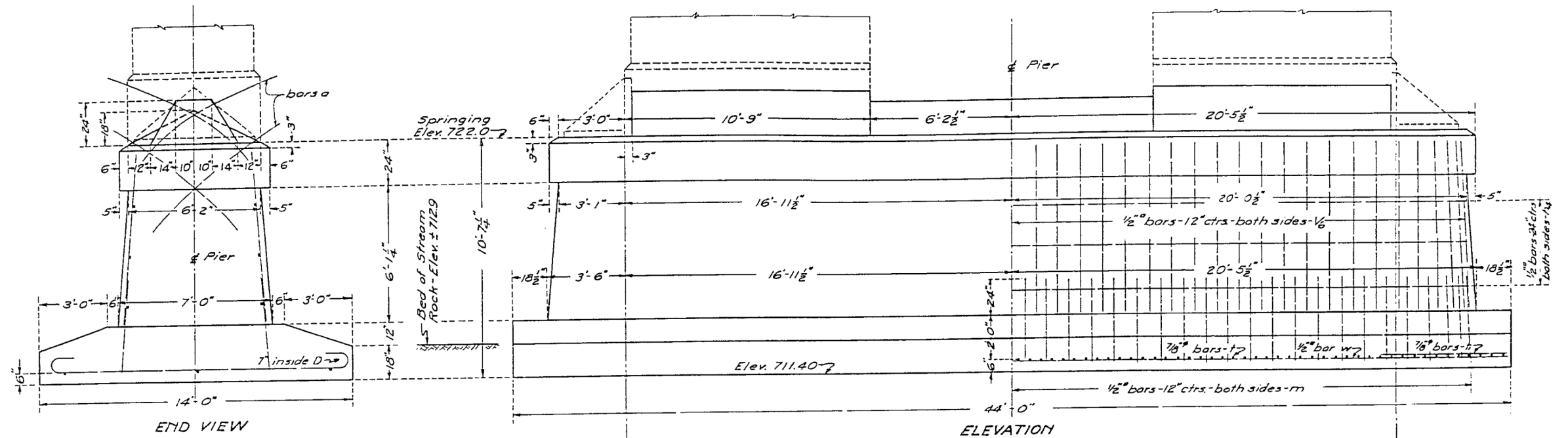


U.S.B.M.:- Brass Plug in front of Woolen Mill Elev. 73702

STATE OF ILLINOIS
DEPARTMENT OF PUBLIC WORKS & BUILDINGS
DIVISION OF HIGHWAYS

ROUTE NO.	DRAWN	DATE	SHEETS	NO.
80	103-D	Jo Daviess	11	9
FED. ROAD DIST. NO. 7 ILLINOIS FED. AID PROJECT				

SHEET NO. 7
6 SHEETS



BILL OF MATERIAL-TWO PIERS

Bar	No.	Size	Length
V6	176	1/2"	7'-9"
h4	24	"	23'-9"
m	176	"	4'-0"
t	176	3/8"	16'-3"
t1	64	"	8'-0"
w	12	1/2"	22'-9"

Class X Concrete - Cu.Yds. - 2741
Reinforcing Steel - Lbs. - 9370
Rock Excavation - Cu.Yds. - 680

Class X Concrete shall be used throughout.
All reinforcing steel shall be wired securely
in place before concrete is poured.

STANDARD	COMPUTED	- J.W. Williamson	EXAMINED	- J. F. [Signature]	3-2-19-23
	CHECKED	- [Signature]	PASSED	- [Signature]	
	DRAWN	- J.W.	APPROVED	- E. [Signature]	
	CHECKED	- [Signature]			
SPECIAL	ASSEMBLED	-			
	CHECKED	-			

PIER DETAILS
HANOVER BRIDGE
S.B.I. ROUTE 80 SECTION 103-D
JO DAVIESS COUNTY
STATION 259+18

FOR INFORMATION ONLY