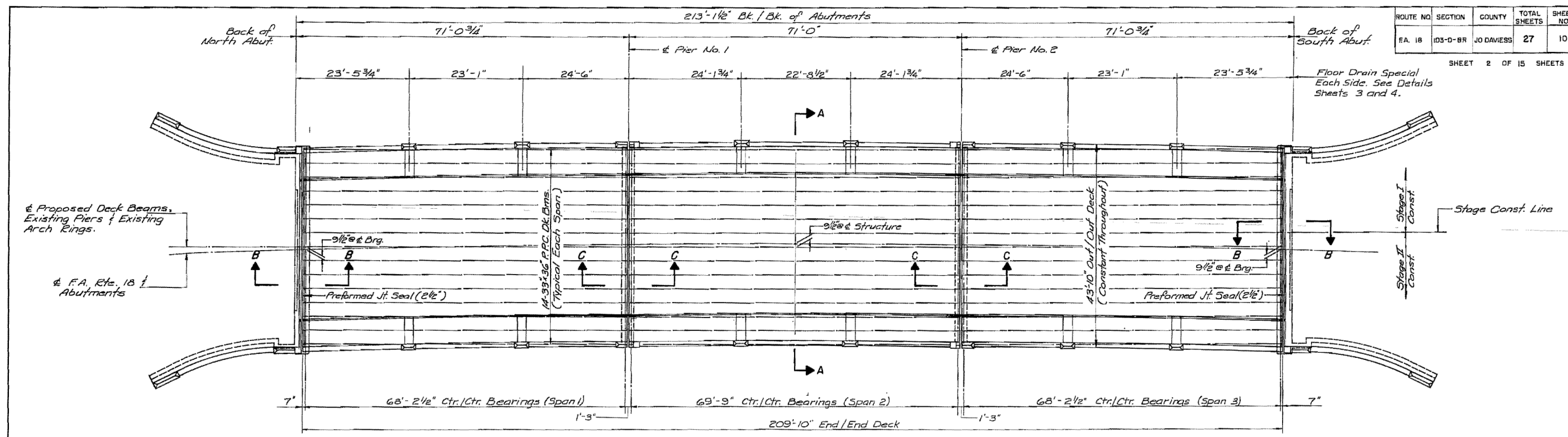
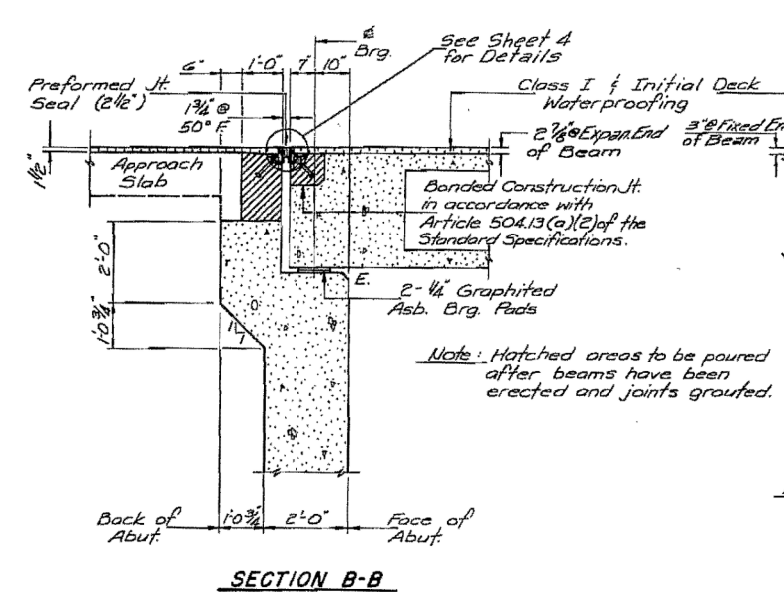


ROUTE NO.	SECTION	COUNTY	TOTAL SHEETS	SHEET NO.
EA. 18	103-D-BR	JO DAVIESS	27	10

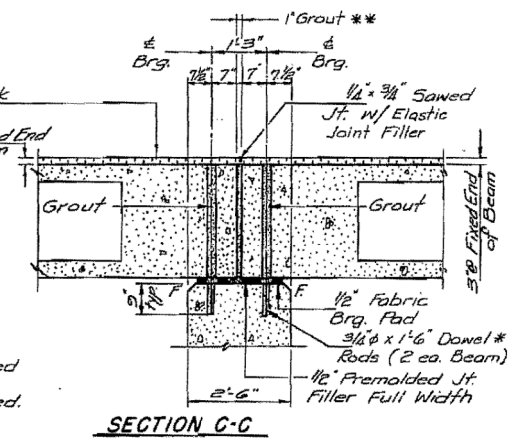
SHEET 2 OF 15 SHEETS



PLAN

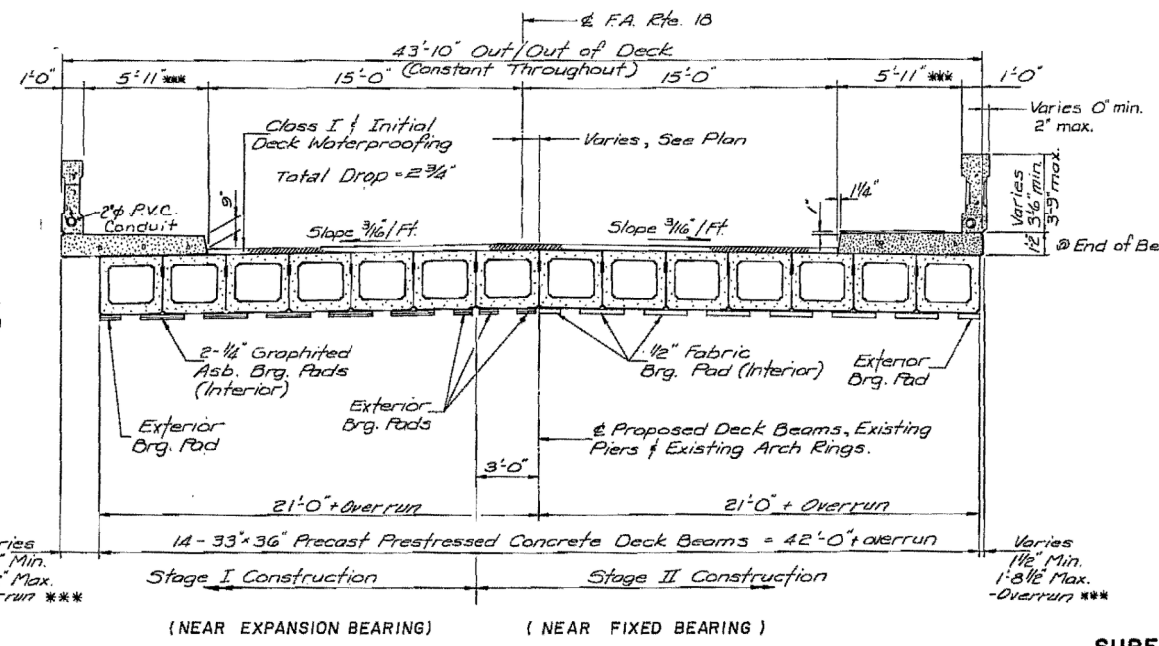


SECTION B-B



SECTION C-C

Note: \*\* 1" joint shall be packed with a very dry mix of 2:1 sand and P.C. Mortar. 1" Dimension may vary plus or minus to accommodate tolerance in beam lengths.



SECTION A-A

Note: \*\*\* If overrun at either side exceeds 1/8", the sidewalk on that side shall be widened sufficiently to cover the top of the outside beam & O/O deck adjusted.

Note: \* Dowel rods to be grouted in 1 1/4" drilled holes after beams are in place and allowed to cure 24 hrs (min) prior to grouting the Shear Keys.

**SUPERSTRUCTURE BILL OF MATERIAL**

Bar	No.	Size	Length	Shape
b <sub>1</sub> (E)	24	#5	20'-7"	---
b <sub>2</sub> (E)	24	#5	20'-10"	---
b <sub>3</sub> (E)	24	#5	23'-2"	---
b <sub>4</sub> (E)	32	#5	22'-10"	---
b <sub>5</sub> (E)	16	#5	20'-5"	---
b <sub>6</sub> (E)	24	#5	24'-3"	---
b <sub>7</sub> (E)	8	#5	6'-0"	---
c(E)	420	#5	7'-10"	---
d <sub>1</sub> (E)	354	#4	6'-0"	L
d <sub>2</sub> (E)	354	#7	6'-0"	L
f <sub>1</sub>	6	#5	17'-8"	---
f <sub>2</sub>	6	#5	23'-8"	---
h <sub>1</sub>	8	#6	16'-10"	---
h <sub>2</sub>	8	#6	24'-5"	---
h <sub>3</sub>	8	#6	5'-6"	---
Class X Concrete	Cu. Yds.		111.3	
Reinf. Bars	Lbs.		810	
Reinf. Bars (Exp. Coated)	Lbs.		14,080	
P.P.C. Dk. Bms. (33' Op.)	Sq. Ft.		8,806	

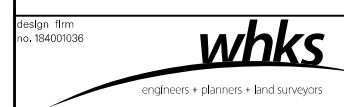
For location of "f" bars of expansion end of deck beam, see sheet 6.  
Bars designated (E) shall be epoxy coated. (See Spec. Provisions)

**SUPERSTRUCTURE DECK**

FA. RTE. 18 OVER APPLE RIVER  
SECTION 103-D-BR  
JO DAVIESS COUNTY  
STATION 259+08.20

DESIGNED:	V. S. N.
CHECKED:	D. H. C.
DRAWN:	R. A. W.
CHECKED:	K. L. F.

Note: Ends of beams shall be aligned at the expansion joints. Any lineal variations in the beam lengths shall be placed at the fixed joints.



USER NAME = dheberling	DESIGNED -	REVISED -
FILE NAME = 0430028-64E08.dgn	CHECKED -	REVISED -
PLOT SCALE = 0:2.00000 '1' / in.	DRAWN -	REVISED -
PLOT DATE = 8/5/2013	CHECKED -	REVISED -

STATE OF ILLINOIS  
DEPARTMENT OF TRANSPORTATION

EXISTING PLANS  
STRUCTURE NO. 043-0080  
SHEET NO. 48 OF 60 SHEETS

F.A.P. RTE.	SECTION	COUNTY	TOTAL SHEETS	SHEET NO.
308	103BR-4	JO DAVIESS	159	98
CONTRACT NO. 64E08				
ILLINOIS FED. AID PROJECT				