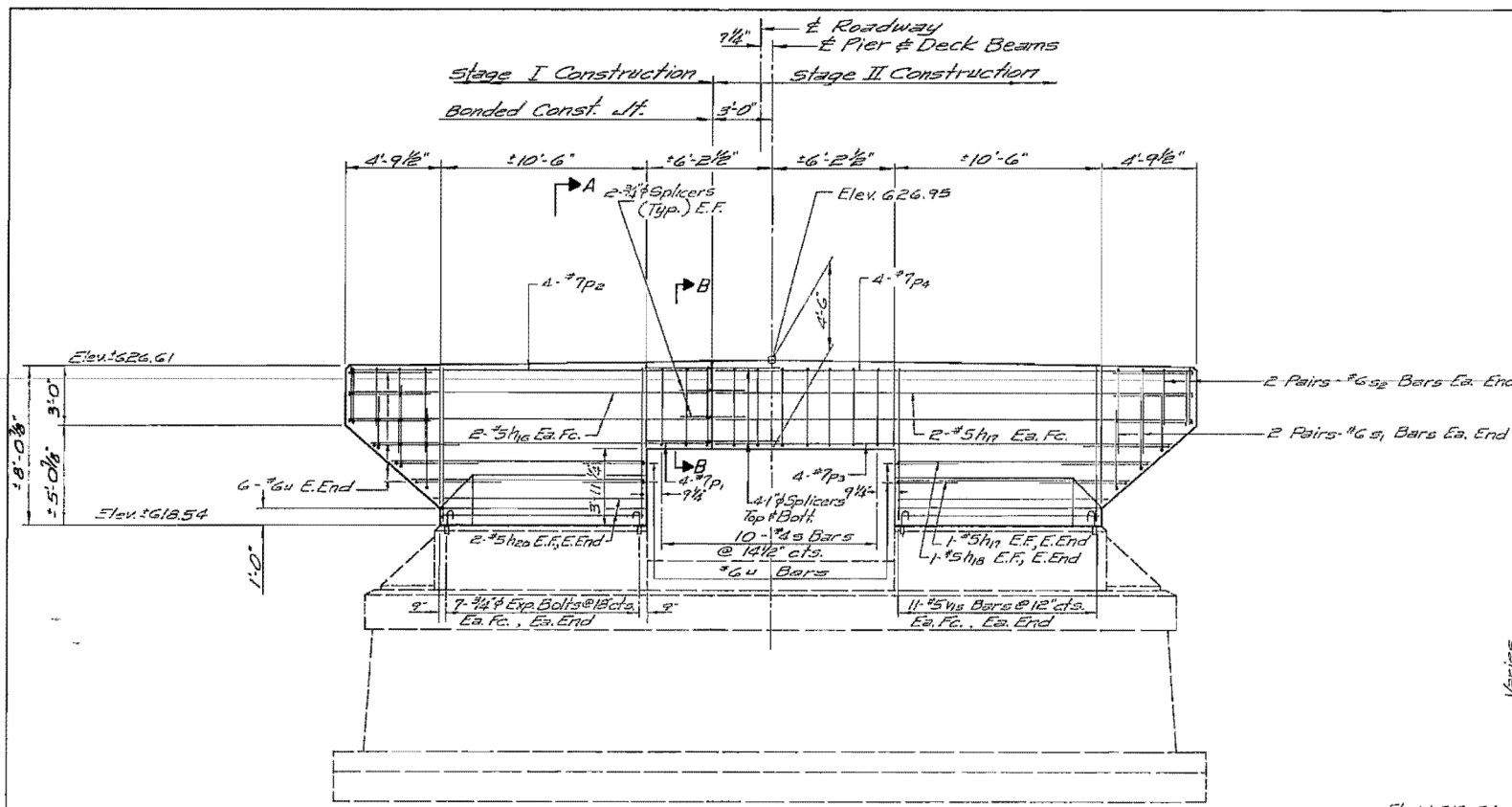
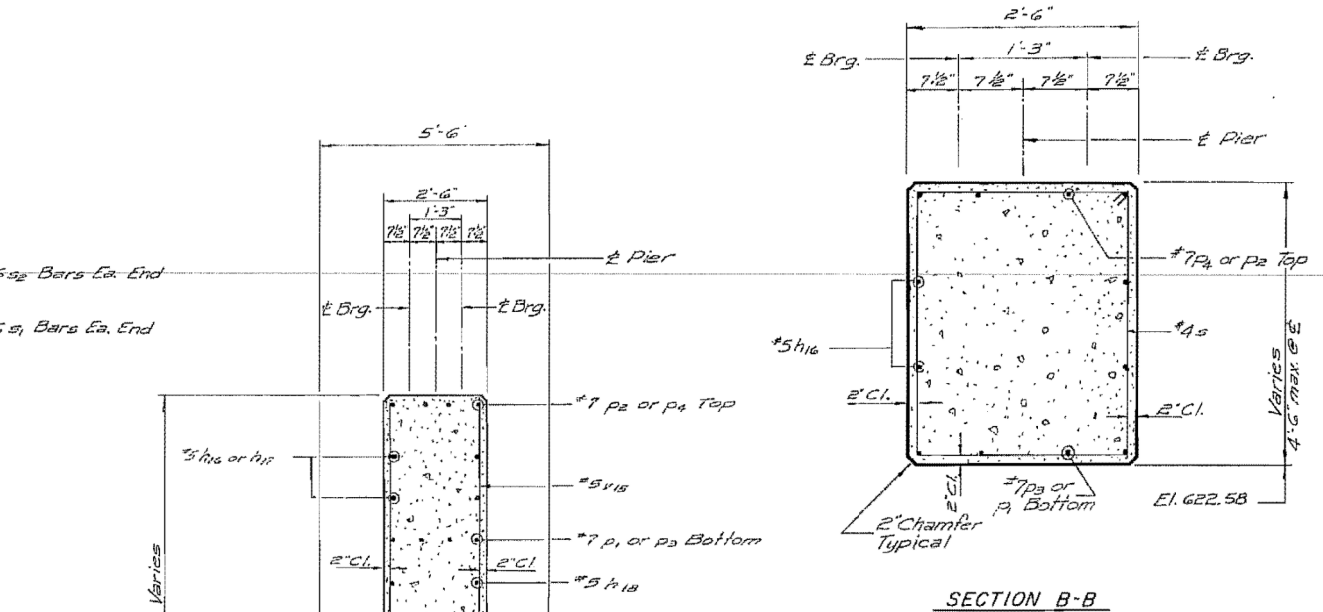


ROUTE NO.	SECTION	COUNTY	TOTAL SHEETS	SHEET NO.
FA. 18	103-D-BR	JO DAVIESS	27	17

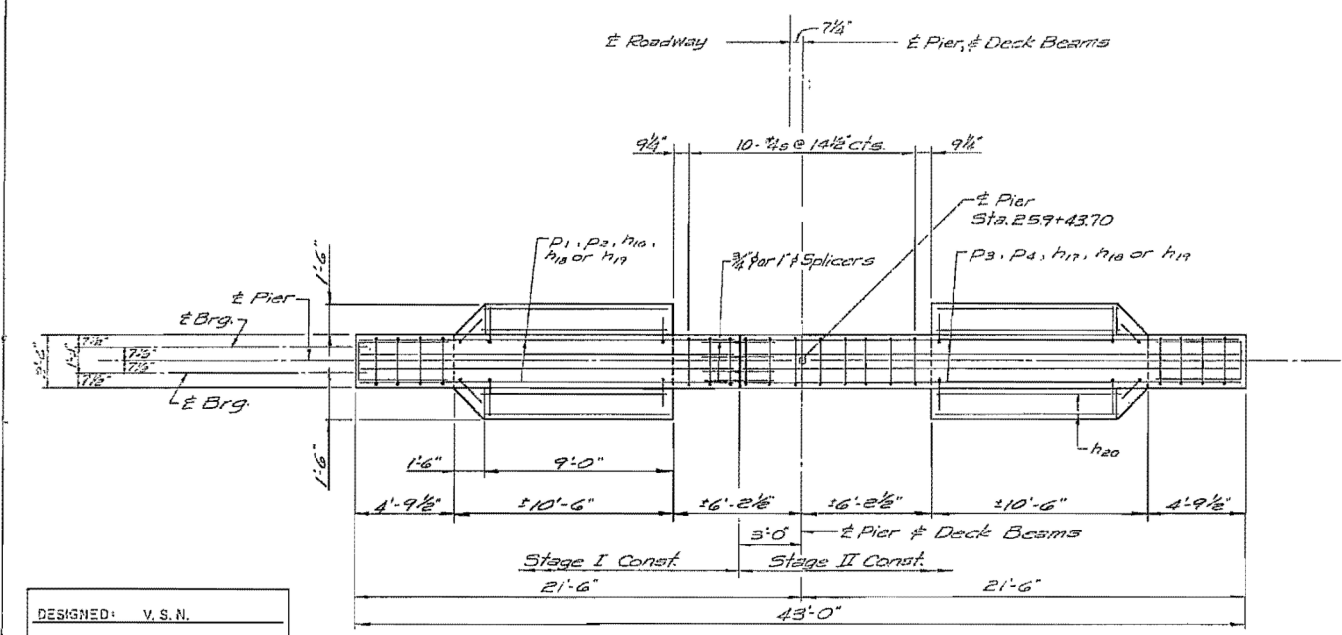
SHEET 9 OF 15 SHEETS



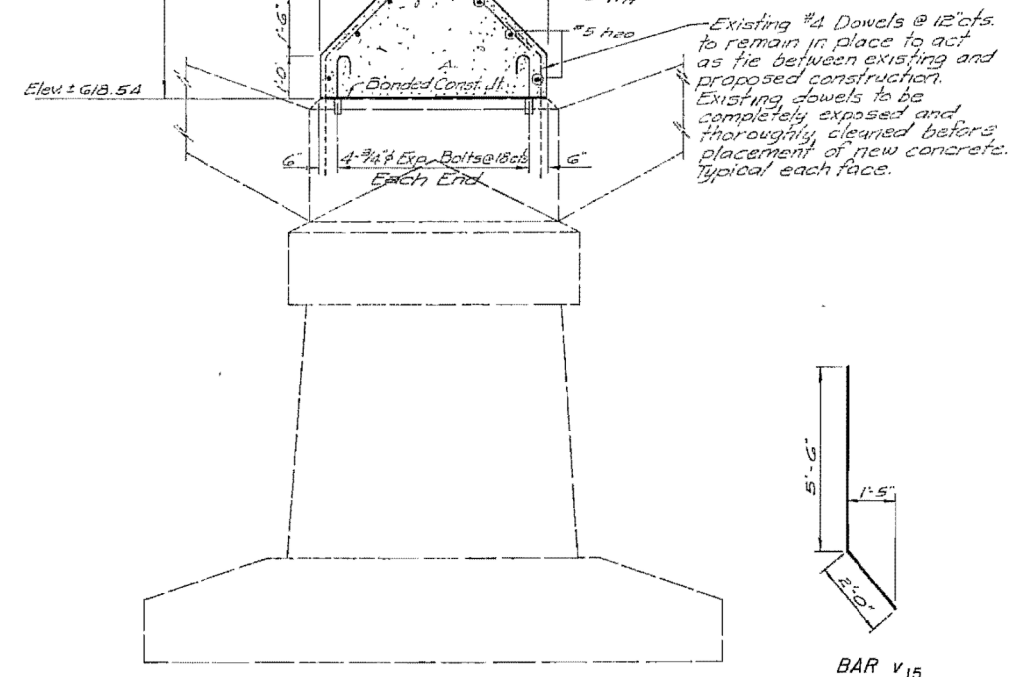
ELEVATION



SECTION B-B



PLAN

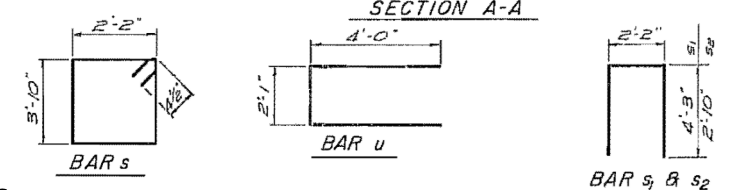


SECTION A-A

**BILL OF MATERIAL**

Bar	No.	Size	Length	Shape
h16	4	#5	18'-2"	—
h17	4	#5	24'-2"	—
h18	4	#5	12'-10"	—
h19	4	#5	11'-10"	—
h20	3	#5	8'-9"	—
P1	4	#7	17'-0"	—
P2	4	#7	18'-2"	—
P3	4	#7	23'-0"	—
P4	4	#7	24'-2"	—
S	10	#4	15'-11"	□
S1	8	#6	13'-8"	□
S2	8	#6	10'-10"	□
U	16	#6	13'-1"	—
V16	44	#5	7'-6"	—
Class X Concrete		C.Y.	29.2	
Reinforcement Bars		Lbs.	2090	
Exp. Bolts 3/4"		Each	32	
Concrete Removal		C.Y.	27.3	

Existing #4 Dowels @ 12" cts. to remain in place to act as tie between existing and proposed construction. Existing dowels to be completely exposed and thoroughly cleaned before placement of new concrete. Typical each face.



DESIGNED:	V. S. N.
CHECKED:	D. H. C.
DRAWN:	R. A. W.
CHECKED:	K. L. F.

STATE OF ILLINOIS  
DEPARTMENT OF TRANSPORTATION

**PIER NO. 2**  
FA. RTE. 18 OVER APPLE RIVER.  
SECTION 103-D-BR  
JO DAVIESS COUNTY  
STATION 259 + 08.20

FOR INFORMATION ONLY