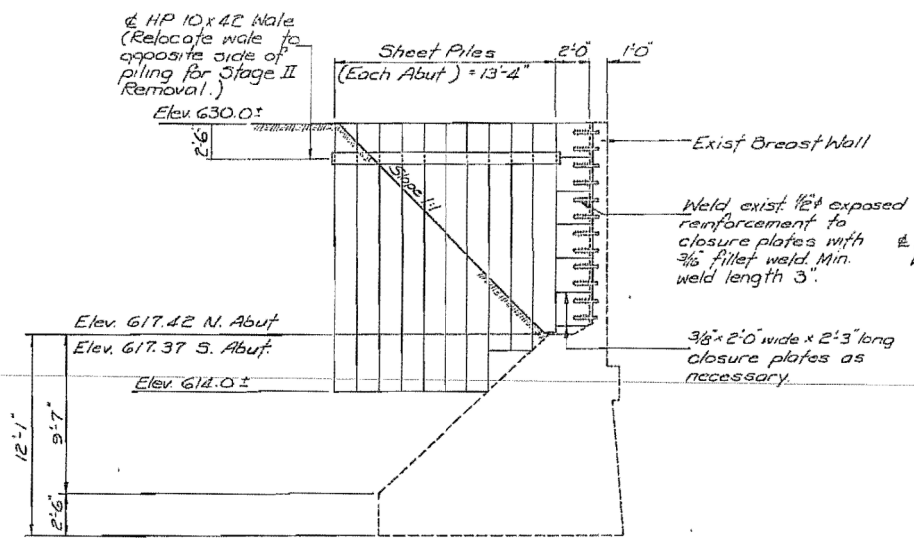
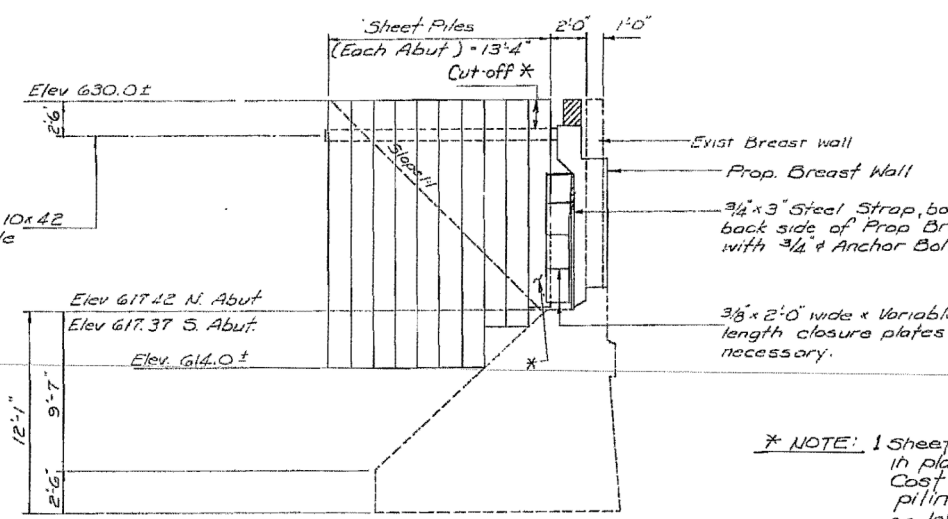


ROUTE NO.	SECTION	COUNTY	TOTAL SHEETS	SHEET NO.
FA. 18	103-D-BR	JODAVIESS	27	23

SHEET 15 OF 15 SHEETS



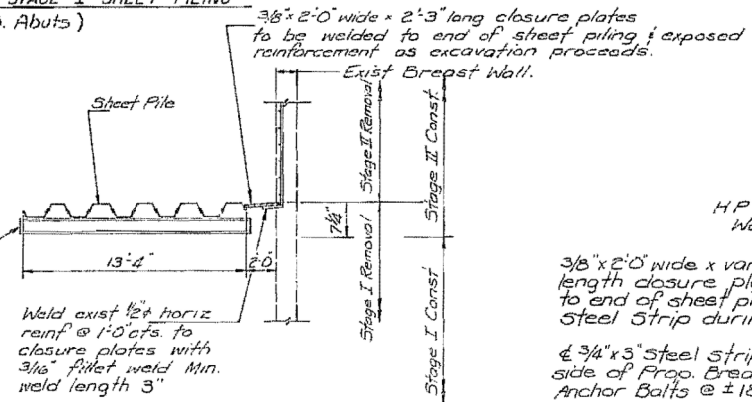
ELEVATION - STAGE I SHEET PILING
(Typ @ N & S Abuts)



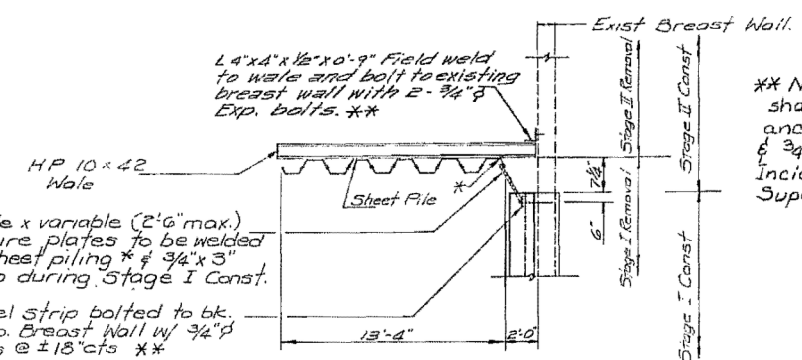
ELEVATION - STAGE II SHEET PILING
(Typ @ N & S Abut)

- Notes:**
- 1) Stage I closure plates welded to end of sheet pile shall not be removed until Stage I Construction is opened to traffic.
 - 2) Cost of Waling, connections & accessories are incidental to temp. sheet piling.
 - 3) Sheet piling shall have a minimum Section Modulus $S = 10.7 \text{ in.}^3$ per foot of wall.

* NOTE: 1 Sheet Pile, as indicated, must remain in place after Stage II Construction. Cost incidental to temporary sheet piling. Other sheeting may be removed or left in place at Contractor's option. All sheeting that remains shall be cut-off at elev 628.0 prior to placing the approach slab.



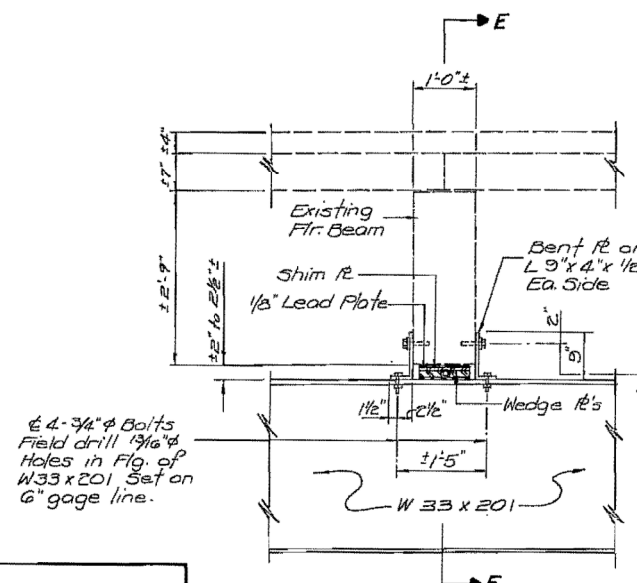
PLAN - STAGE I SHEET PILING



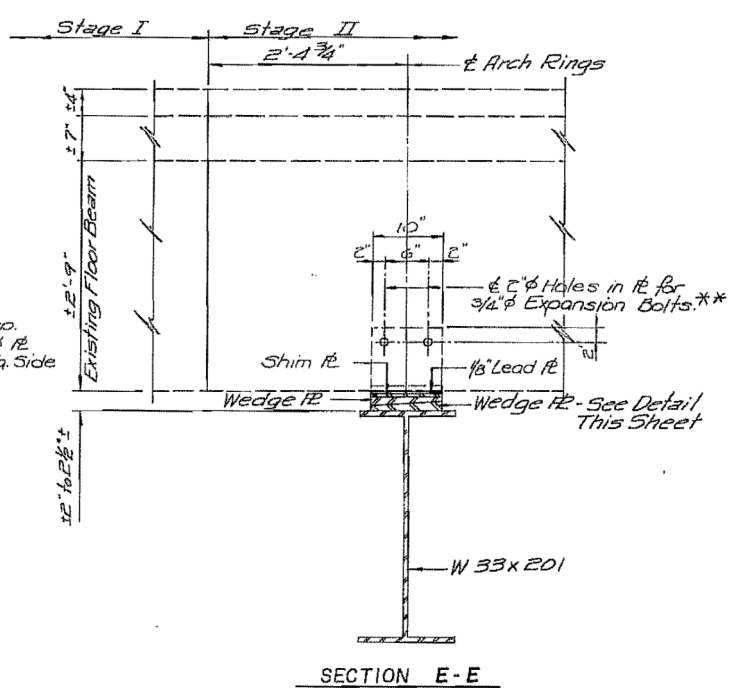
PLAN - STAGE II SHEET PILING

** Note: "3/4" Exp. Bolts" on this sheet shall consist of appr. expansion anchors (min. cert. prf. ld. = 9080#), & 3/4" H.S. bolts. These are Cost Incidental to Removal of Existing Superstructures.

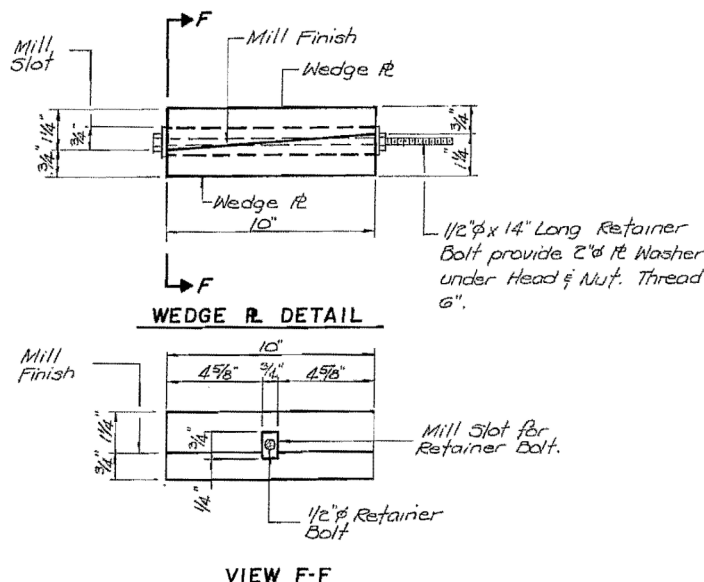
STAGE CONSTRUCTION - SHEET PILING DETAILS



DETAIL B
(Reference Sht 14)



SECTION E-E



WEDGE R DETAIL

VIEW F-F

NOTE: Furnish and install 1/4" x 10" x 0'-10" Shim Plates as required.

STAGE CONSTRUCTION DETAILS
F.A. RTE. 18 OVER APPLE RIVER
F.A. RTE. 18, SEC. 103-D-BR
JO DAVIESS COUNTY
STATION 259 + 08.20

DESIGNED:	V. S.N.
CHECKED:	D.H.C.
DRAWN:	R.A.W.
CHECKED:	K.L.F.

FOR INFORMATION ONLY

USER NAME = dheberling	DESIGNED -	REVISD -
FILE NAME = 0430028-64E08.dgn	CHECKED -	REVISD -
PLOT SCALE = 0:2.00000 '1' / in.	DRAWN -	REVISD -
PLOT DATE = 8/5/2013	CHECKED -	REVISD -

F.A.P. RTE.	SECTION	COUNTY	TOTAL SHEETS	SHEET NO.
308	103BR-4	JODAVIESS	159	110

CONTRACT NO. 64E08
ILLINOIS FED. AID PROJECT