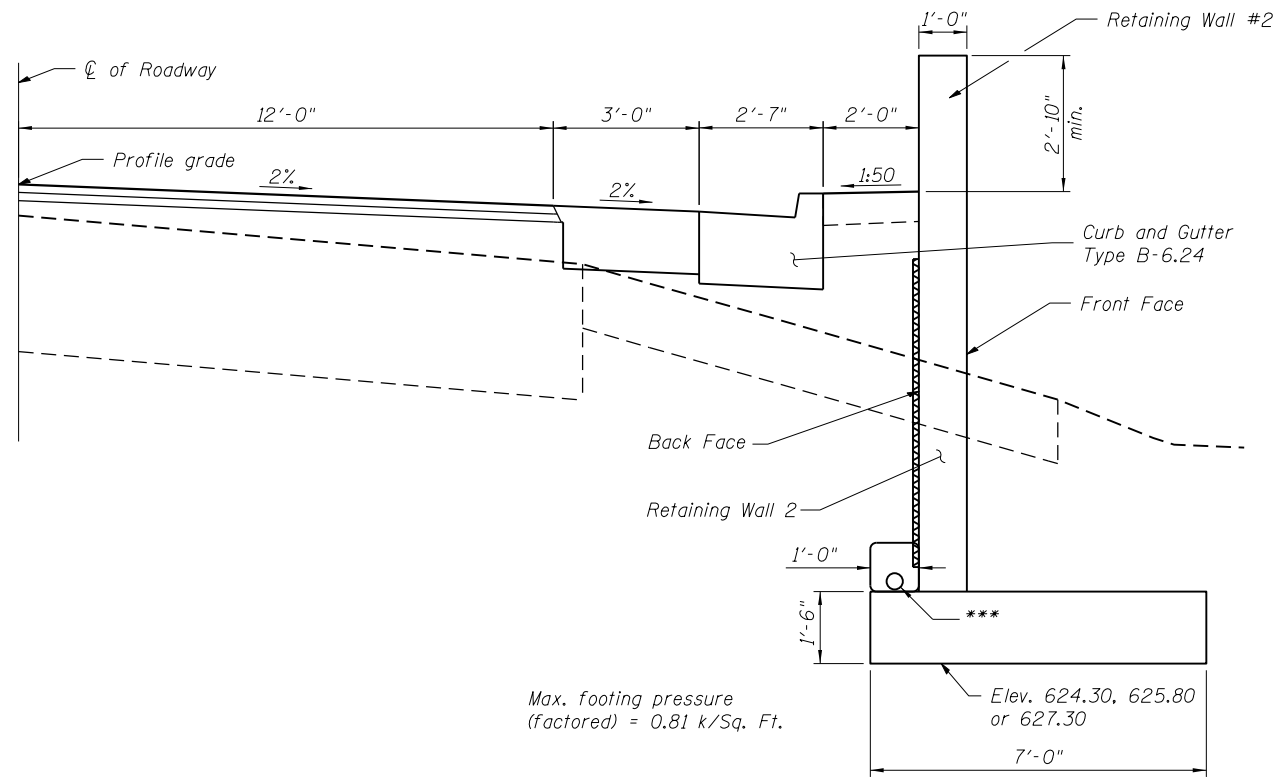


TOTAL BILL OF MATERIAL

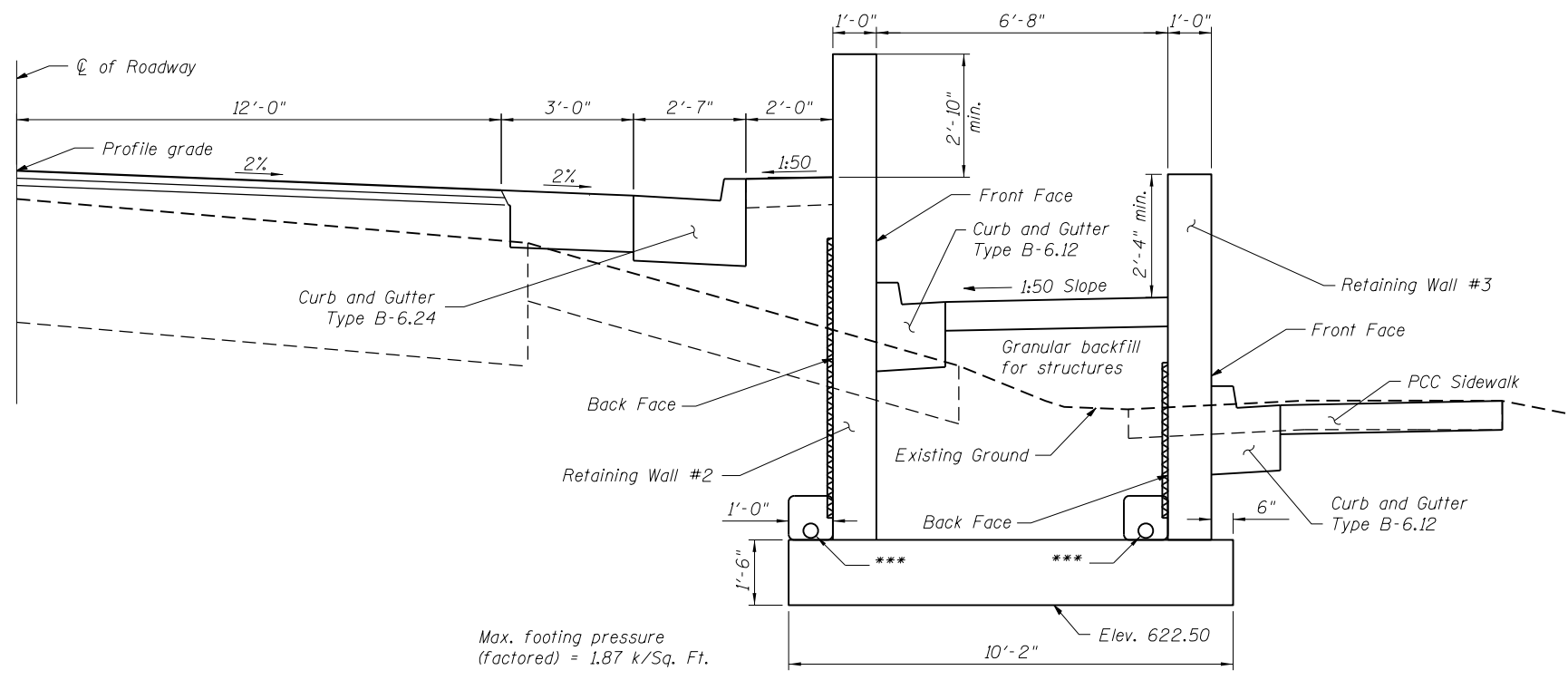
ITEM	UNIT	Quantity
Structure Excavation	Cu. Yd.	252
Concrete Structures	Cu. Yd.	85.8
Reinforcement Bars, Epoxy Coated	Pound	16,880
Geocomposite Wall Drain	Sq. Yd.	77
Granular Backfill for Structures	Cu. Yd.	95
Pipe Underdrains for Structures, 4"	Foot	140



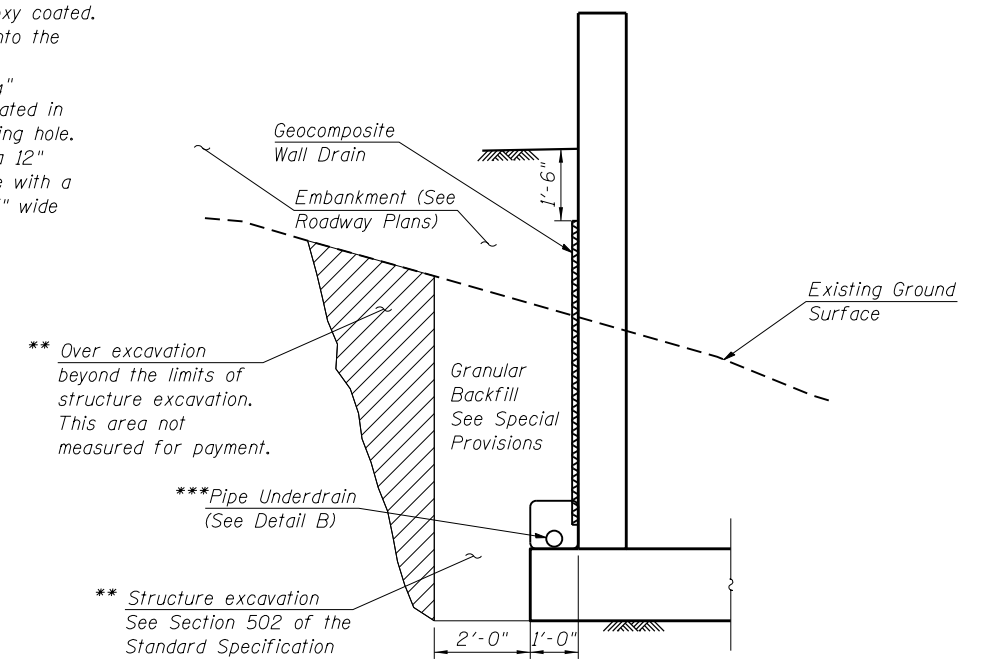
CROSS SECTION
(Near Panels B,C & D)

General Notes:

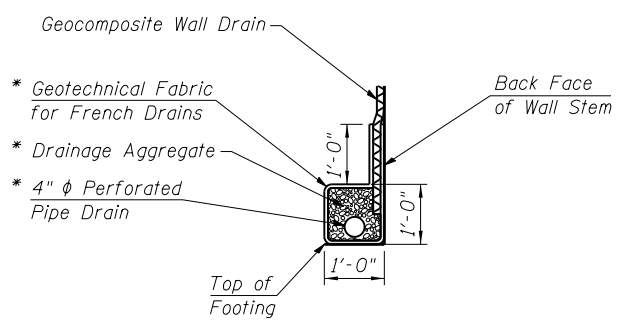
1. Reinforcement bars designated (E) shall be epoxy coated.
2. Pipe Underdrains shall be connected to drain into the nearby inlets.
3. All exposed concrete edges shall be bevelled 3/4"
4. The opening for storm sewer shall be accommodated in the geocomposite wall drain by cutting a matching hole. The edge of the cut hole shall be covered by a 12" wide strip of geotextile fabric secured in place with a continuous application of contact adhesive or 3" wide plastic tape around the perimeter.



CROSS SECTION
(Near Panel A)



EXCAVATION & DRAIN DETAILS



DETAIL B

FILE NAME = Z64E08-002-Detail.dgn
 MODEL = Default
 PLOT DRIVER = V8...IDOT...PDF...11x17.plt



USER NAME = S.Dulakis	DESIGNED -	REVISED
PLOT SCALE = 16x0.0000 '1' / in.	CHECKED -	REVISED
PLOT DATE = 7/25/2013	DRAWN -	REVISED
	CHECKED -	REVISED

STATE OF ILLINOIS
DEPARTMENT OF TRANSPORTATION

CROSS SECTIONS AND TOTAL BILL OF MATERIAL
RETAINING WALLS #2 & #3

SHEET NO. 2 OF 5 SHEETS

F.A.P. RTE.	SECTION	COUNTY	TOTAL SHEETS	SHEET NO.
308	103BR-4	JO DAVIESS	159	119
CONTRACT NO. 64E08				
ILLINOIS FED. AID PROJECT				