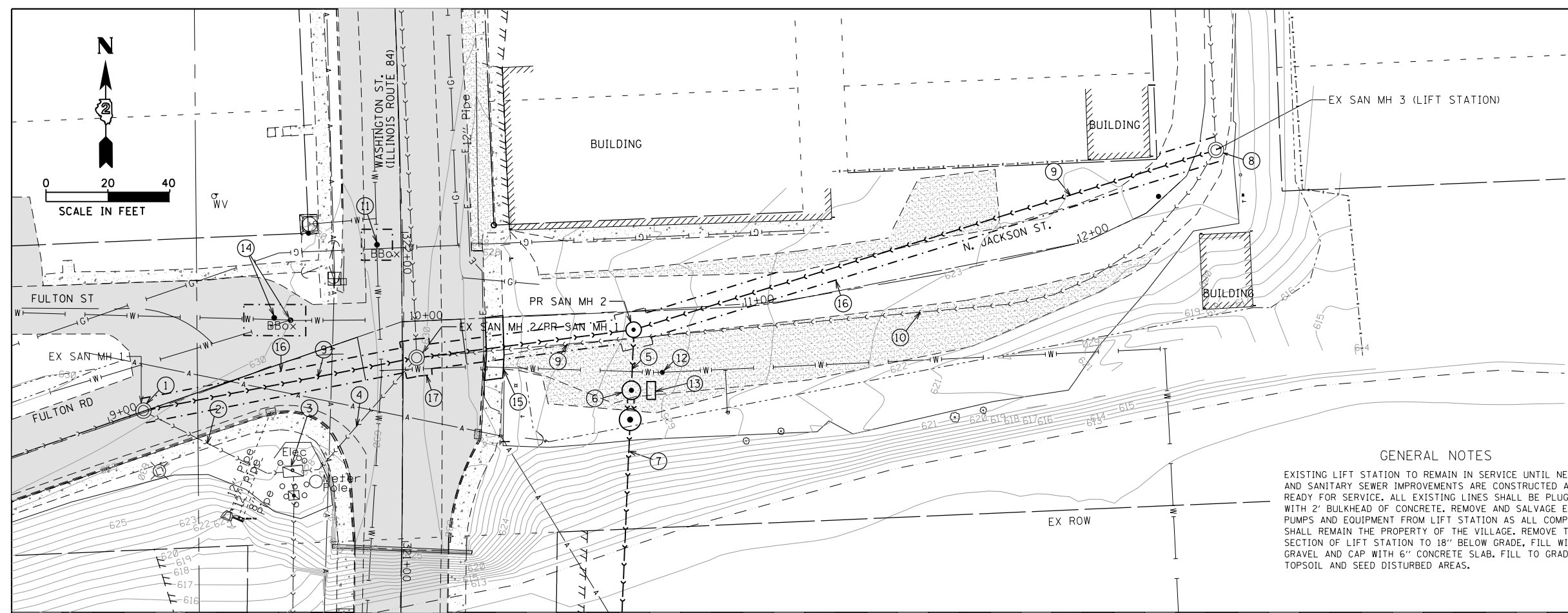
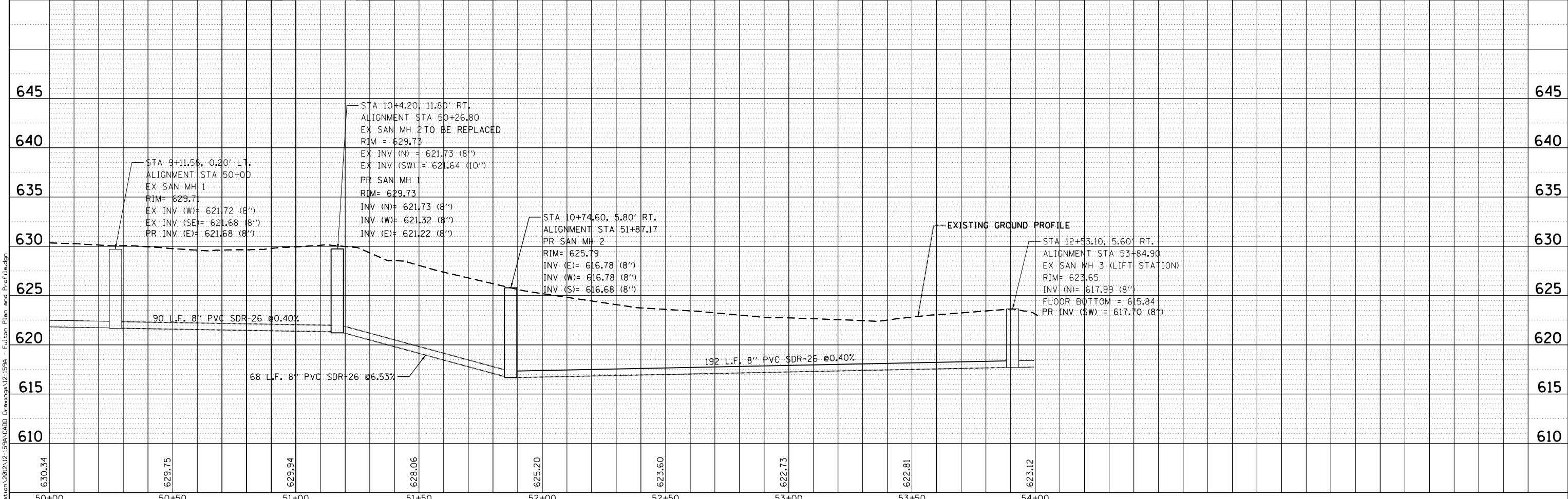


|                |      |
|----------------|------|
| PLAN           | DATE |
| BY             |      |
| REVIEWED       |      |
| PLOTTED        |      |
| ALIGNMENT      |      |
| CADD FILE NAME |      |
| NO.            |      |
| NOTE BOOK      |      |
| CHECKED        |      |
| STRUCTURE      |      |
| NOTATIONS      |      |
| CHKD           |      |
| NO.            |      |



- KEY NOTES**
1. CONNECTION TO EXISTING MANHOLE (COREDRILL & RUBBER BOOT).
  2. EXISTING 8" SANITARY SEWER TO BE ABANDONED. LINE SHALL BE FILLED WITH GRAVEL AND 2" BULKHEAD OF CONCRETE.
  3. EXISTING LIFT STATION TO BE ABANDONED. SEE GENERAL NOTES.
  4. EXISTING 10" SANITARY SEWER TO BE ABANDONED. ABANDONED IN PLACE SANITARY SEWER UNDER CURB & GUTTER OR PAVEMENT SECTION SHALL BE FILLED WITH FLOWABLE FILL (CLSM) ART 1019.
  5. PROPOSED SANITARY SEWER. SEE SHEET 5.
  6. PROPOSED DUPLEX STATION. SEE DETAIL SHEET 7.
  7. PROPOSED SANITARY FORCE MAIN. SEE SHEET 5.
  8. CONNECTION TO EXISTING MANHOLE (CORE DRILL & RUBBER BOOT), MANHOLE CLEANING/VACUUM INCIDENTAL TO CONTRACT. EXISTING LIFT STATION PUMPS AND EQUIPMENT SHALL BE REMOVED AND REMAIN THE PROPERTY OF THE VILLAGE. A CONCRETE FILLET SHALL BE PLACED IN THE MANHOLE BOTTOM FOR PROPOSED FLOW DIRECTION.
  9. PROPOSED 350 LF OF 8" PVC SDR-26 SANITARY SEWER.
  10. EXISTING 2" FORCE MAIN TO BE ABANDONED.
  11. EXISTING 4" GATE VALVE AND BOX TO BE REPLACED.
  12. PROPOSED 8" GATE VALVE AND BOX.
  13. PROPOSED ELECTRICAL PANEL MOUNTING STRUCTURE. SEE DETAIL SHEET 7.
  14. EXISTING 8" WATER MAIN, VALVES AND FITTING TO BE REPLACED. SEE DETAIL SHEET 8.
  15. 13 50 YD PCC DRIVEWAY, 7"
  16. LIMITS OF PROPOSED TEMPORARY PAVEMENT. SEE DETAIL SHEET 8.
  17. LIMITS OF PROPOSED HMA PAVEMENT (FULL-DEPTH). SEE DETAIL SHEET 8.
- GENERAL NOTES**
- EXISTING LIFT STATION TO REMAIN IN SERVICE UNTIL NEW LIFT AND SANITARY SEWER IMPROVEMENTS ARE CONSTRUCTED AND READY FOR SERVICE. ALL EXISTING LINES SHALL BE PLUGGED WITH 2" BULKHEAD OF CONCRETE. REMOVE AND SALVAGE EXISTING PUMPS AND EQUIPMENT FROM LIFT STATION AS ALL COMPONENTS SHALL REMAIN THE PROPERTY OF THE VILLAGE. REMOVE TOP SECTION OF LIFT STATION TO 18" BELOW GRADE, FILL WITH GRAVEL AND CAP WITH 6" CONCRETE SLAB. FILL TO GRADE WITH TOPSOIL AND SEED DISTURBED AREAS.

|           |      |
|-----------|------|
| PROFILE   | DATE |
| BY        |      |
| REVIEWED  |      |
| PLOTTED   |      |
| GRADES    |      |
| NOTATIONS |      |
| CHKD      |      |
| NO.       |      |
| NOTE BOOK |      |
| CHECKED   |      |
| STRUCTURE |      |
| NOTATIONS |      |
| CHKD      |      |
| NO.       |      |



**FEHR GRAHAM**  
ENGINEERING & ENVIRONMENTAL  
ILLINOIS DESIGN FIRM NO. 184-000026

|                              |                 |           |
|------------------------------|-----------------|-----------|
| USER NAME = tliefert         | DESIGNED - TMH  | REVISED - |
| PLLOT SCALE = 40,0000' / in. | DRAWN - YG      | REVISED - |
| PLLOT DATE = 7/24/2013       | CHECKED -       | REVISED - |
|                              | DATE - 09/14/12 | REVISED - |

**STATE OF ILLINOIS  
DEPARTMENT OF TRANSPORTATION**

**IL ROUTE 84  
OVER APPLE RIVER**

**PLAN AND PROFILE STA.  
50 + 00 LIFT STATION**

|                           |          |            |              |           |
|---------------------------|----------|------------|--------------|-----------|
| F.A. RTE.                 | SECTION  | COUNTY     | TOTAL SHEETS | SHEET NO. |
| 308                       | 103 BR-4 | JO DAVIESS | 159          | 144       |
| CONTRACT NO.              |          |            |              |           |
| ILLINOIS FED. AID PROJECT |          |            |              |           |

SCALE: 1"=20' SHEET NO. 6 OF 10 SHEETS STA. TO STA.