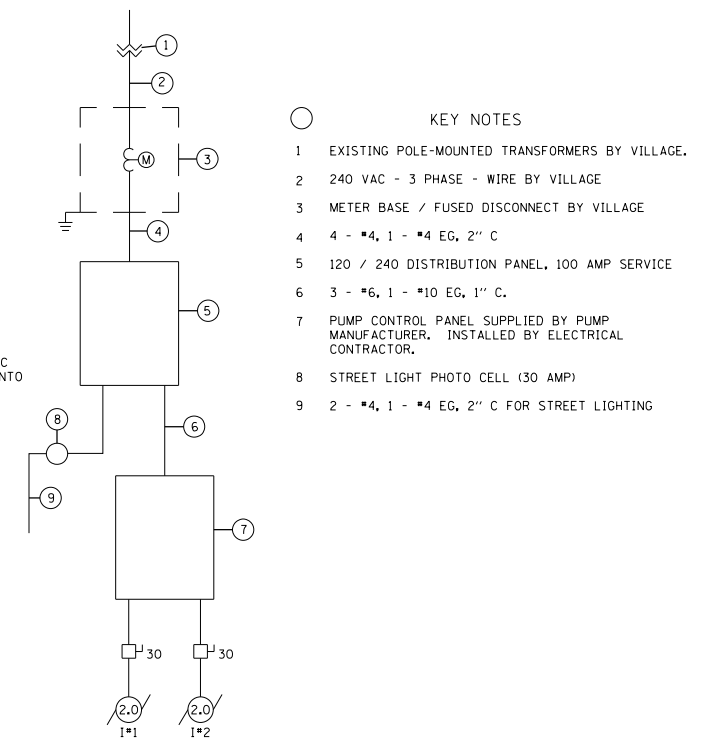
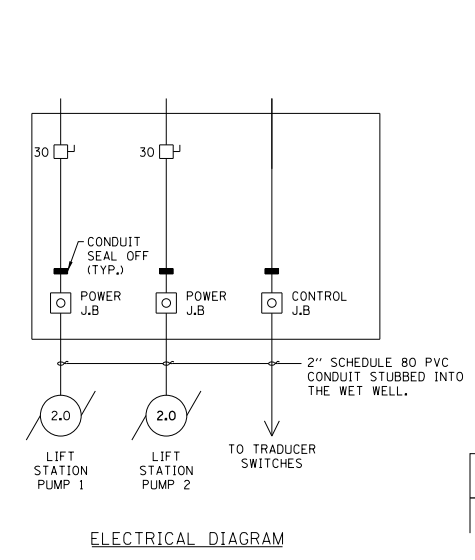
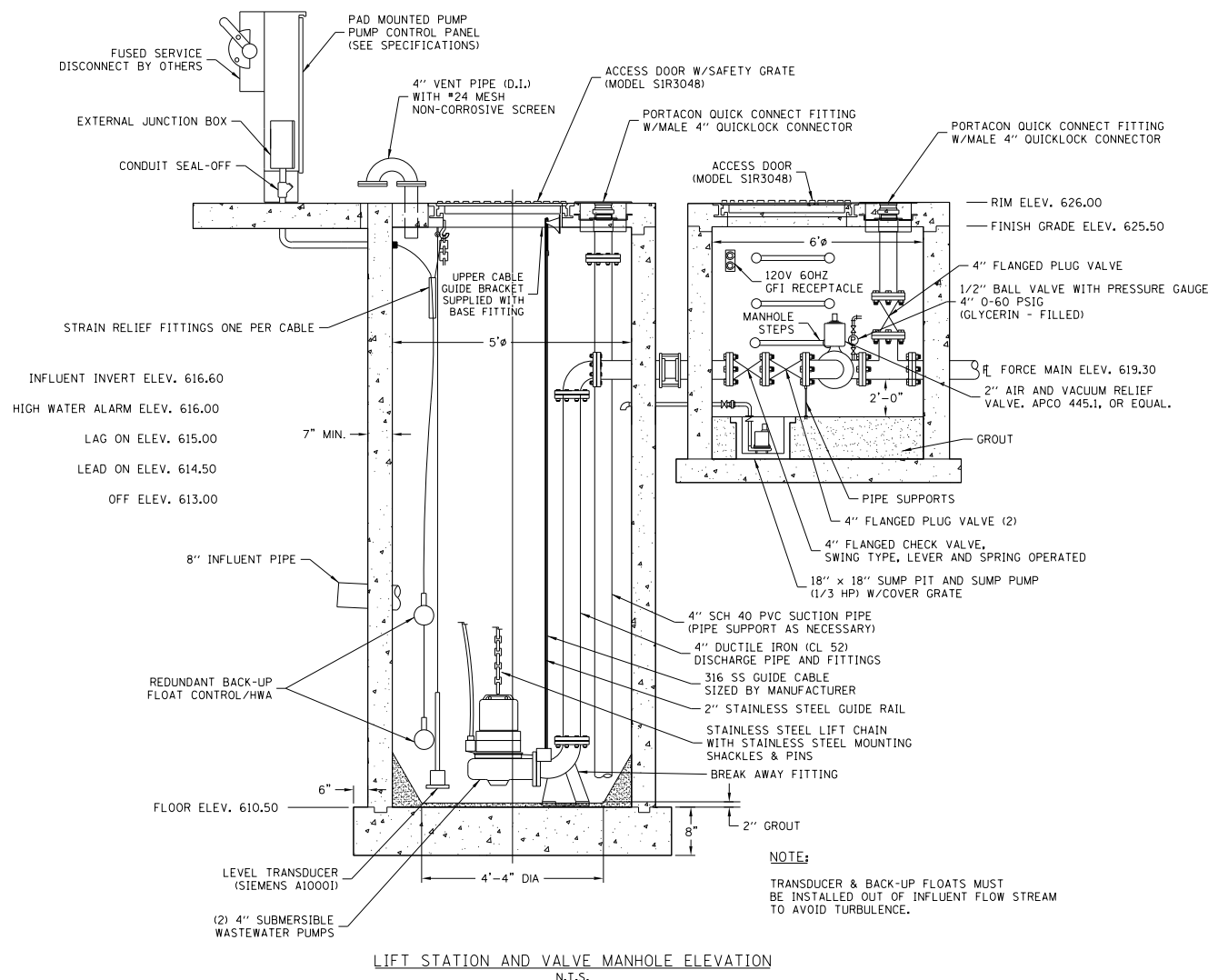


PUMP SPECIFICATIONS		INCOMING SERVICE	
GROUND FOS PUMP MODEL	SLV.30.40.20.A.EX.4.61J	VOLTS	230
DESIGN CAPACITY	150 GPM @ 19 TDH	AMPS	100
IMPELLER	6-11/16" trim	PHASE	3
HORSEPOWER	2.0	HERTZ	60
RPM	1750	WIRE	3

- GENERAL NOTES:**
- PUMP SUCTION AND DISCHARGE SHALL BE 4" DIAMETER. PUMPS SHALL BE CAPABLE OF PASSING 3" DIAMETER SPHERES. SEE SPECIFICATIONS.
 - LIFT STATION SHALL BE CONSTRUCTED OF PREFABRICATED CONCRETE STRUCTURES. SEE SPECIFICATIONS.
 - ALL ELECTRICAL MOTORS & WIRING SHALL COMPLY WITH THE CURRENT NATIONAL ELECTRIC CODE EDITION.
 - LINK-SEAL SHALL BE USED FOR ALL PIPE PENETRATES WITH STRUCTURES.



- KEY NOTES**
- EXISTING POLE-MOUNTED TRANSFORMERS BY VILLAGE.
 - 240 VAC - 3 PHASE - WIRE BY VILLAGE
 - METER BASE / FUSED DISCONNECT BY VILLAGE
 - 4 - #4, 1 - #4 EG, 2" C
 - 120 / 240 DISTRIBUTION PANEL, 100 AMP SERVICE
 - 3 - #6, 1 - #10 EG, 1" C.
 - PUMP CONTROL PANEL SUPPLIED BY PUMP MANUFACTURER. INSTALLED BY ELECTRICAL CONTRACTOR.
 - STREET LIGHT PHOTO CELL (30 AMP)
 - 2 - #4, 1 - #4 EG, 2" C FOR STREET LIGHTING

NOTE:
TRANSDUCER & BACK-UP FLOATS MUST BE INSTALLED OUT OF INFLUENT FLOW STREAM TO AVOID TURBULENCE.

FILE NAME: G:\projects\station\2012\159A\CADD Drawings\12-159A - Detail.dgn



USER NAME = tizer	DESIGNED - TMH	REVISED -
PLOT SCALE = 48.0000' / in.	DRAWN - YG	REVISED -
PLOT DATE = 7/24/2013	CHECKED -	REVISED -
	DATE - 09/14/12	REVISED -

**STATE OF ILLINOIS
DEPARTMENT OF TRANSPORTATION**

**IL ROUTE 84
OVER APPLE RIVER**

LIFT STATION DETAILS

F.A. RTE.	SECTION	COUNTY	TOTAL SHEETS	SHEET NO.
308	103 BR-4	JO DAVIESS	159	145
CONTRACT NO.				
ILLINOIS FED. AID PROJECT				

SCALE: SHEET NO. 7 OF 10 SHEETS STA. TO STA.