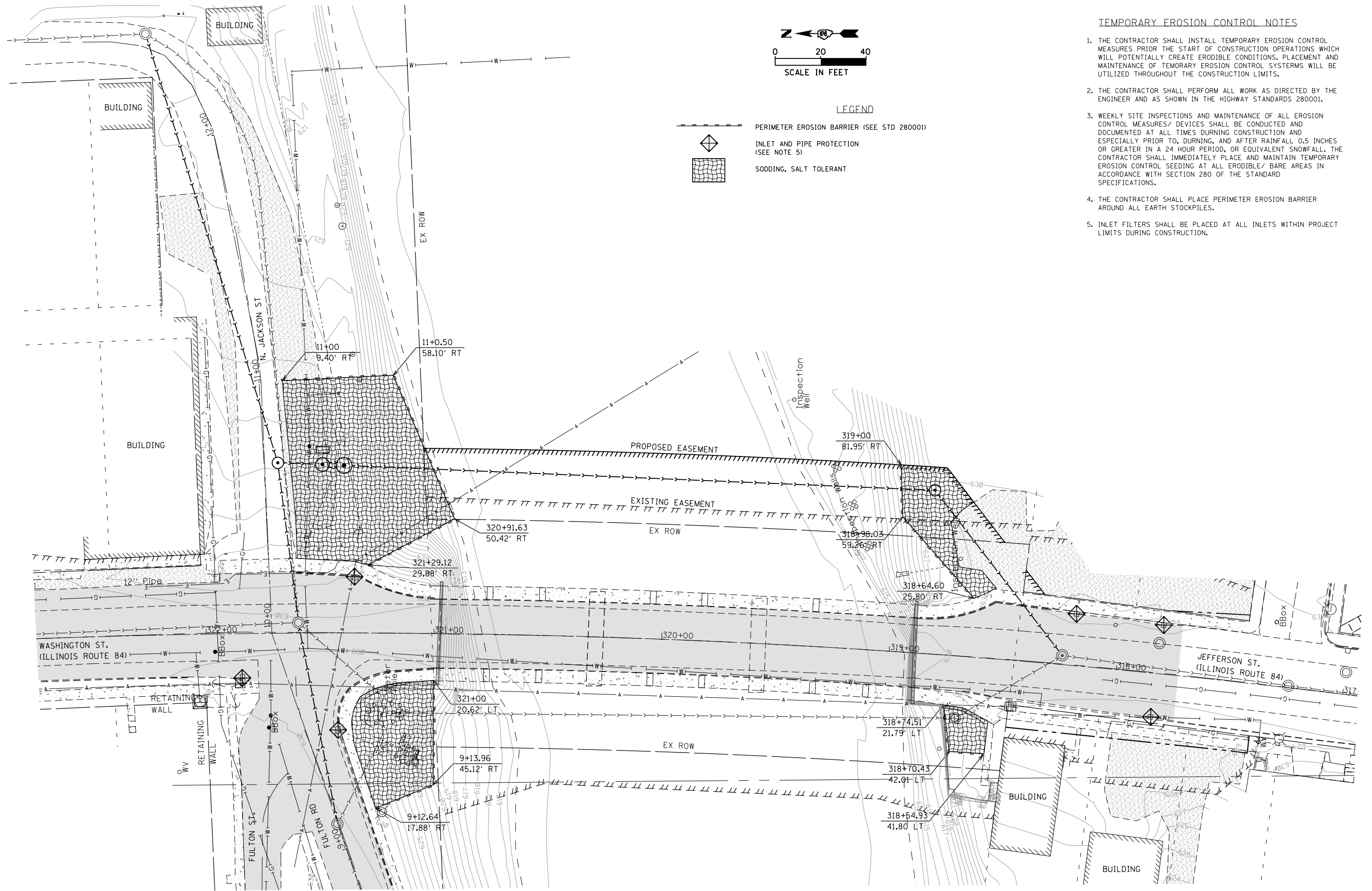
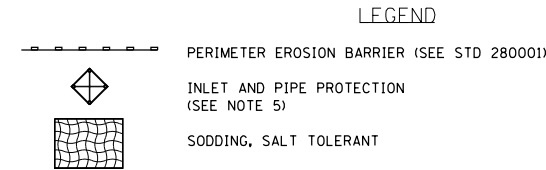
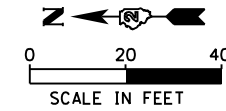


TEMPORARY EROSION CONTROL NOTES

1. THE CONTRACTOR SHALL INSTALL TEMPORARY EROSION CONTROL MEASURES PRIOR THE START OF CONSTRUCTION OPERATIONS WHICH WILL POTENTIALLY CREATE ERODIBLE CONDITIONS. PLACEMENT AND MAINTENANCE OF TEMPORARY EROSION CONTROL SYSTEMS WILL BE UTILIZED THROUGHOUT THE CONSTRUCTION LIMITS.
2. THE CONTRACTOR SHALL PERFORM ALL WORK AS DIRECTED BY THE ENGINEER AND AS SHOWN IN THE HIGHWAY STANDARDS 280001.
3. WEEKLY SITE INSPECTIONS AND MAINTENANCE OF ALL EROSION CONTROL MEASURES/ DEVICES SHALL BE CONDUCTED AND DOCUMENTED AT ALL TIMES DURING CONSTRUCTION AND ESPECIALLY PRIOR TO, DURING, AND AFTER RAINFALL 0.5 INCHES OR GREATER IN A 24 HOUR PERIOD, OR EQUIVALENT SNOWFALL. THE CONTRACTOR SHALL IMMEDIATELY PLACE AND MAINTAIN TEMPORARY EROSION CONTROL SEEDING AT ALL ERODIBLE/ BARE AREAS IN ACCORDANCE WITH SECTION 280 OF THE STANDARD SPECIFICATIONS.
4. THE CONTRACTOR SHALL PLACE PERIMETER EROSION BARRIER AROUND ALL EARTH STOCKPILES.
5. INLET FILTERS SHALL BE PLACED AT ALL INLETS WITHIN PROJECT LIMITS DURING CONSTRUCTION.



FILE NAME: G:\projects\2012\12-159A\CADD_Drawing\12-159A - Erosion Control Plans.dgn
 USER NAME: tliezert

FEHR GRAHAM
ENGINEERING & ENVIRONMENTAL

DESIGNED -	REVISD -
DRAWN - YG	REVISD -
CHECKED - TMH	REVISD -
DATE - 09/14/12	REVISD -

STATE OF ILLINOIS
DEPARTMENT OF TRANSPORTATION

IL ROUTE 84
OVER APPLE RIVER

EROSION CONTROL PLAN

SCALE: 1"=20' SHEET NO. 9 OF 10 SHEETS STA. TO STA.

F.A. RTE.	SECTION	COUNTY	TOTAL SHEETS	SHEET NO.
308	103 BR-4	JO DAVIESS	159	147
CONTRACT NO.				
ILLINOIS FED. AID PROJECT				