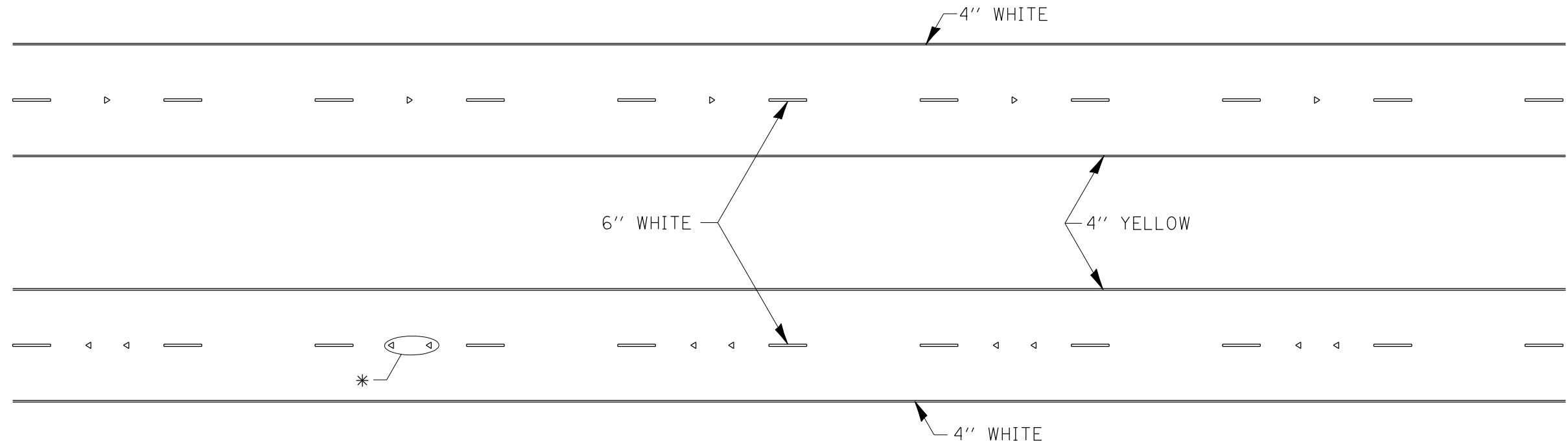
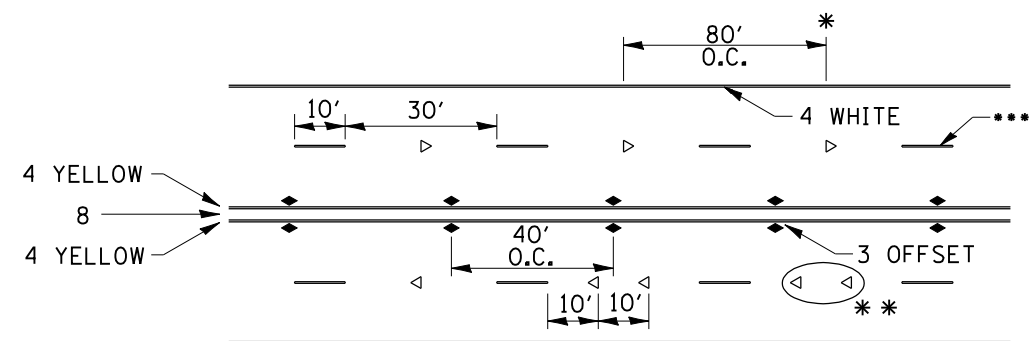


# TYPICAL PAVEMENT MARKINGS



\* SEE HIGHWAY STANDARD 781001 FOR SPACING DETAILS.  
USE DOUBLE MARKERS WHEN ADT  $\geq$  20,000.

## MULTI-LANE / DIVIDED

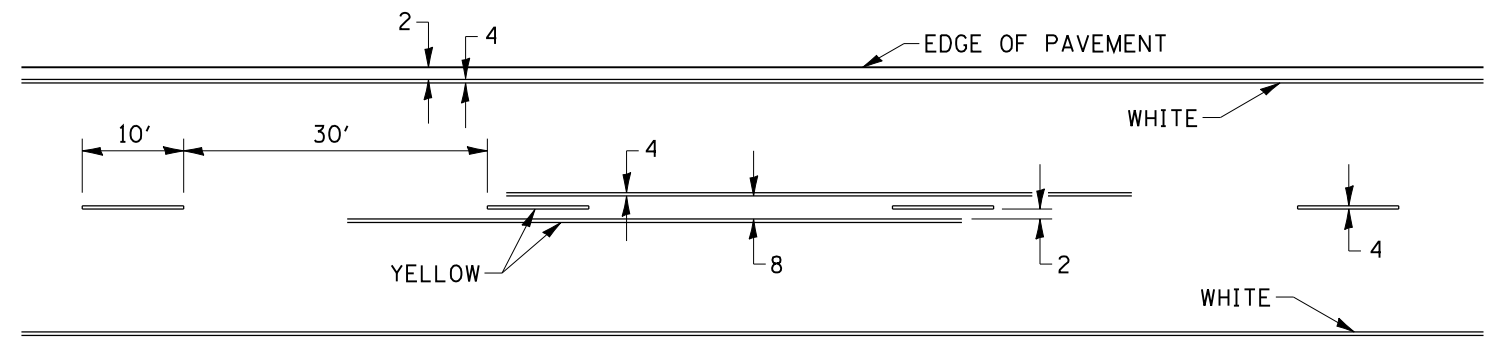


- REDUCE TO 40' O.C. ON CURVES WHERE ADVISORY SPEEDS ARE 10 MPH LOWER THAN POSTED SPEEDS.
- USE DOUBLE MARKERS WHEN ADT  $\geq$  20,000
- CENTERLINE SKIP DASH PAVEMENT MARKING SPEED LIMIT LESS THAN 40 MPH USE 4" LINE SPEED LIMIT 40 MPH AND OVER USE 6" LINE

## MULTI-LANE / UNDIVIDED & ONE WAY

(FOR MULTI-LANE UNDIVIDED HIGHWAYS USE THIS DETAIL NOT HIGHWAY STANDARD 781001)

## TYPICAL PAVEMENT MARKING FOR TWO LANE SECTION – NO PASSING ZONES



SYMBOLS

FILE NAME =	USER NAME = g_jameson	DESIGNED -	REVISED - 11-28-12	<b>STATE OF ILLINOIS DEPARTMENT OF TRANSPORTATION</b>	<b>REGION 2 / DISTRICT 2 STANDARD</b>	F.A.P. RTE.	SECTION	COUNTY	TOTAL SHEETS	SHEET NO.	
L:\Jobs\1DOT-D-2\7308.01\CAADD\CADD Sheets	\Z64E08-SHT-D2-STANDARDS.dgn	DRAWN -	REVISED -			308	103BR-4	JO DAVIESS	159	159	
	PLOT SCALE = 102.3636' / IN.	CHECKED -	REVISED -			CONTRACT NO. 64E08					
	PLOT DATE = 8/5/2013	DATE -	REVISED -			ILLINOIS FED. AID PROJECT					

SCALE: SHEET NO. 12 OF 12 SHEETS STA. TO STA.