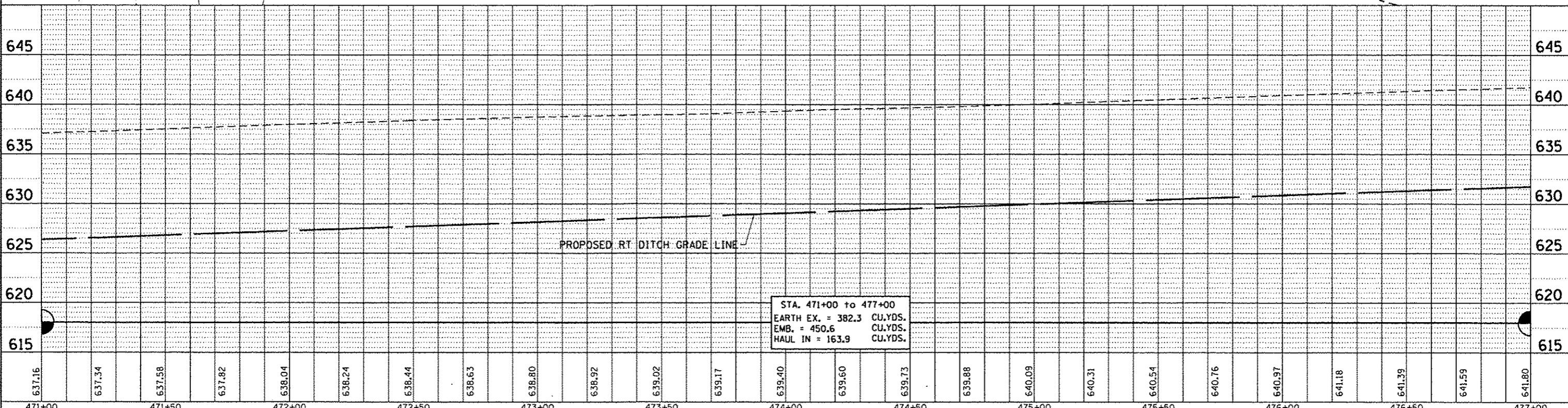
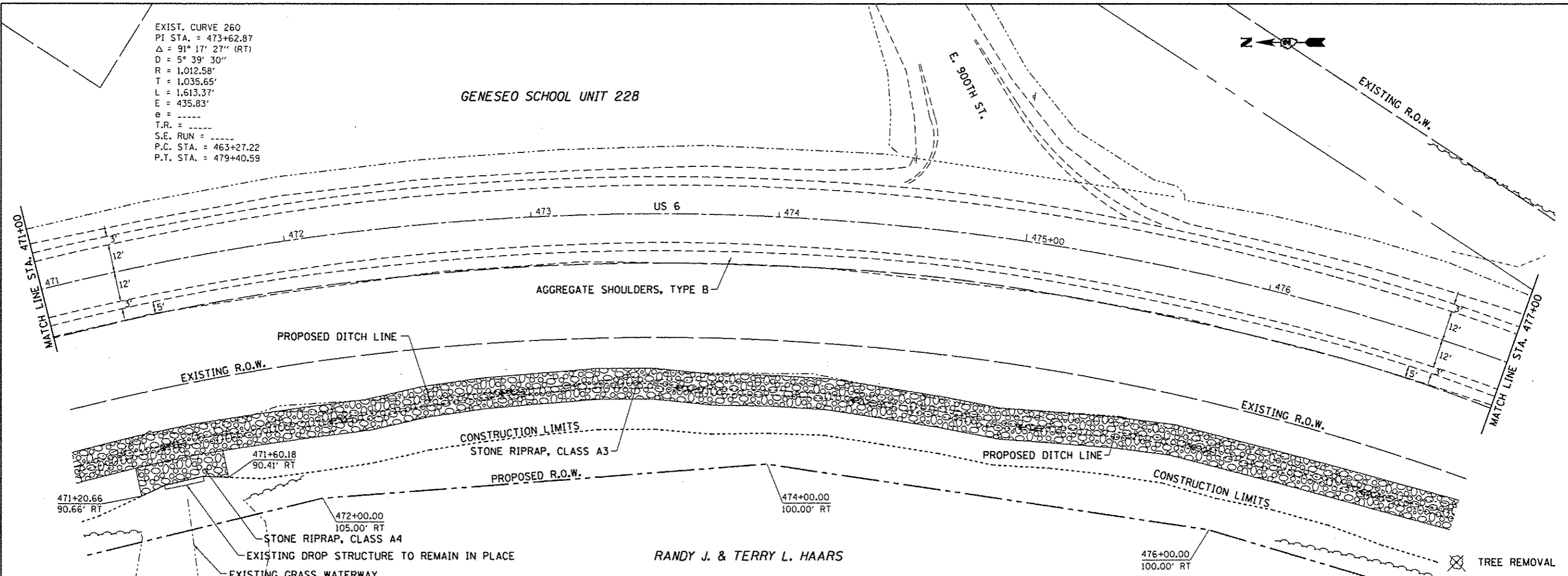


EXIST. CURVE 260
 PI STA. = 473+62.87
 $\Delta = 91^\circ 17' 27''$ (RT)
 $D = 5^\circ 39' 30''$
 $R = 1,012.58'$
 $T = 1,035.65'$
 $L = 1,613.37'$
 $E = 435.83'$
 $e =$
 $T.R. =$
 $S.E. RUN =$
 $P.C. STA. = 463+27.22$
 $P.T. STA. = 479+40.59$

GENESEO SCHOOL UNIT 228



DATE	
BY	
REVIEWED	
PLANNED	
NOTED	
NO.	

DATE	
BY	
REVIEWED	
PLANNED	
NOTED	
NO.	