

Bench Mark: Chiseled square set in headwall of SN 037-1113 located at Sta. 303+07.43 and elevation 627.21.

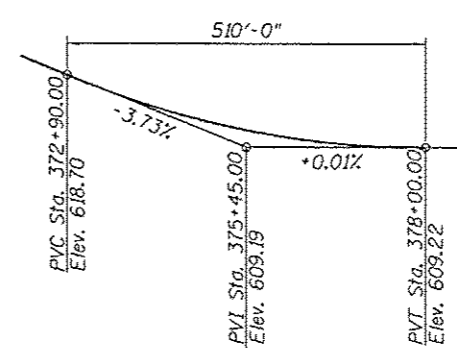
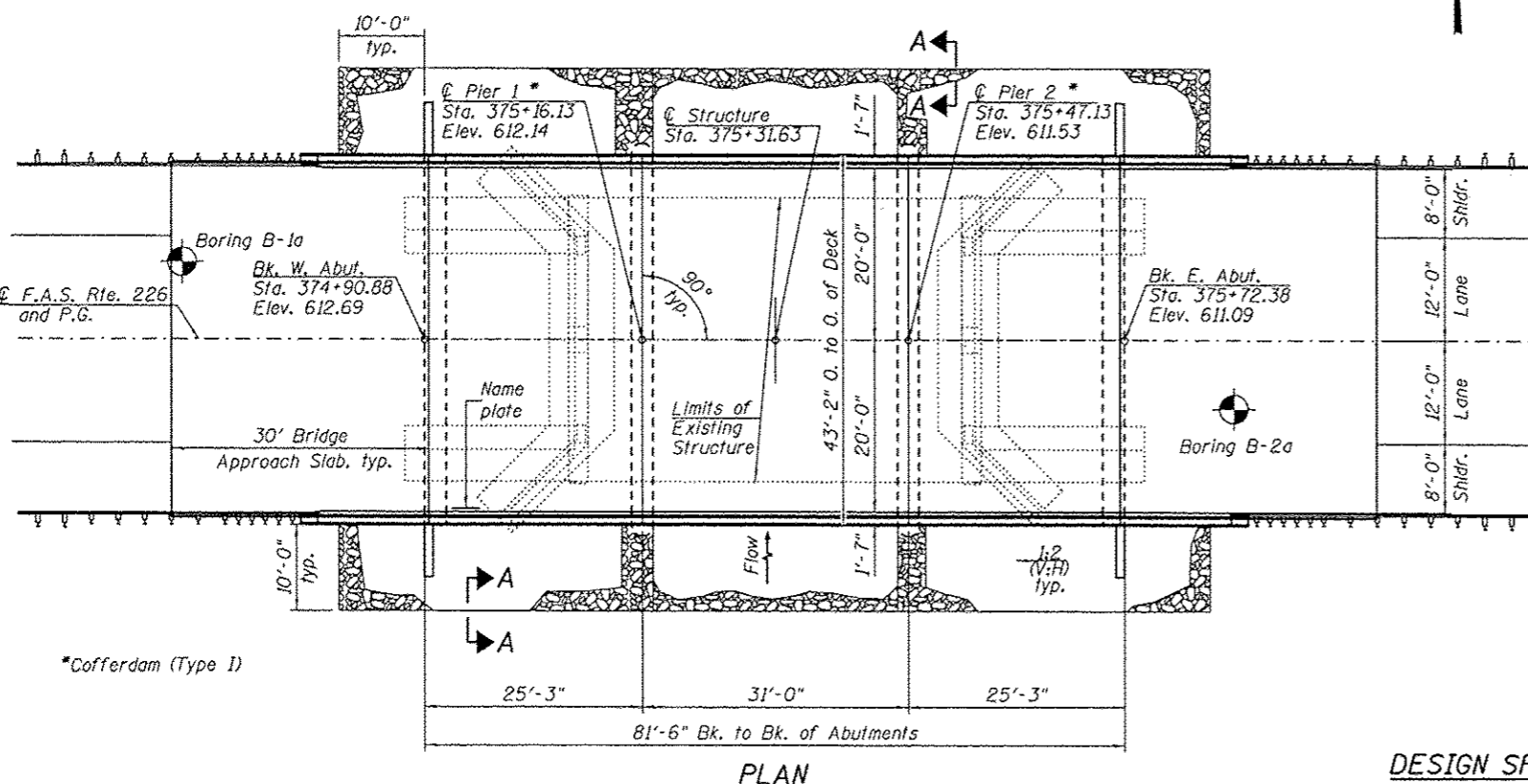
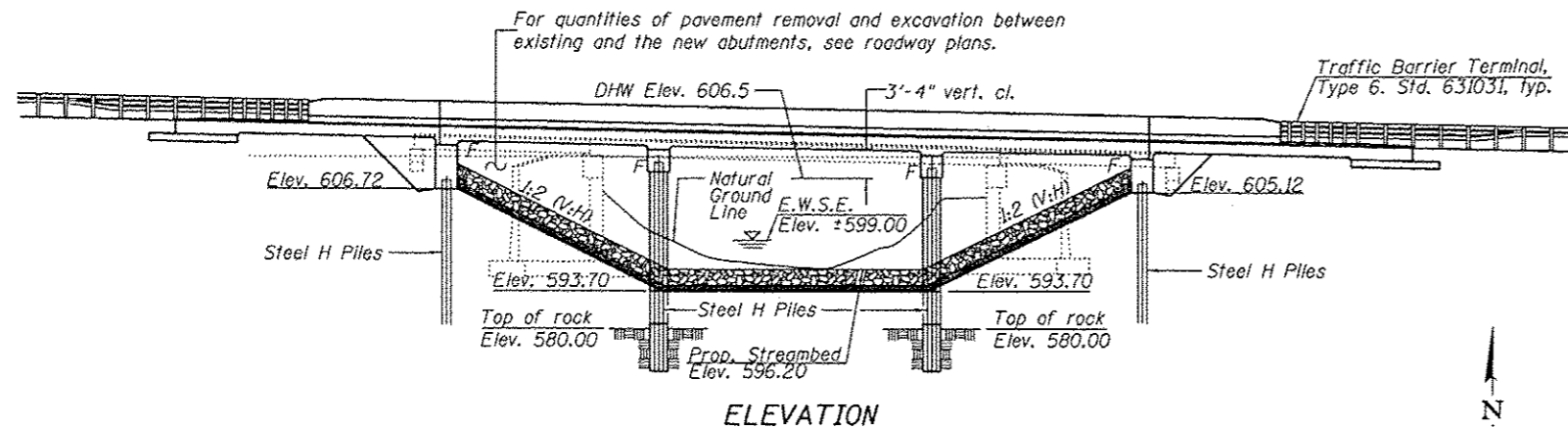
Existing Structure: SN 037-0048 was originally constructed in 1921 as a single span RC through girder on RC abutments. In 1976 the superstructure was reconstructed with a new single span PPC deck beam superstructure on new, widened abutment seats. The bridge is 48'-0" bk. to bk. abuts. and 33'-0" o. to o. of deck.

Existing structure to be removed and replaced. Traffic shall be detoured during construction.

No Salvage

INDEX OF SHEETS

- 1 General Plan & Elevation
- 2 General Data
- 3-4 Top of Slab Elevations
- 5 Top of West Approach Slab Elevations
- 6 Top of East Approach Slab Elevations
- 7 Superstructure
- 8 Superstructure Details
- 9-10 Bridge Approach Slab Details
- 11 West Abutment
- 12 East Abutment
- 13 Piers 1 & 2
- 14 Steel H Pile Details
- 15 Soil Boring Logs



STATION 375+31.63
 BUILT 20 BY
 STATE OF ILLINOIS
 F.A.S. RTE. 226 SEC. 3T & 3BR-1
 LOADING HL-93
 STRUCTURE NO. 037-0178

NAME PLATE
 See Std. 515001

DESIGN SCOUR ELEVATION TABLE

Design Scour Elevations (ft.)				
	W. Abut.	Pier 1	Pier 2	E. Abut.
0.100	606.7	586.5	584.0	605.1

WATERWAY INFORMATION

Drainage Area = 22.3 sq. mi. Low Grade Elev. 609.11 @ Sta. 378+50

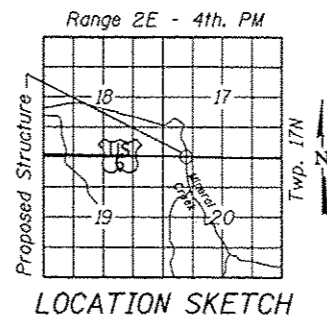
Flood	Freq. Yr.	Q C.F.S.	Opening Sq. Ft.		Nat. H.W.E.	Head - Ft.		Headwater El.	
			Exist.	Prop.		Exist.	Prop.	Exist.	Prop.
Ten-Year	10	2,450	295	479	606.0	2.3	2.1	608.3	608.1
Existing Overtopping	25	3,197	309	n/a	606.3	2.8	n/a	609.1	n/a
Design	50	3,750	318	516	606.5	2.8	2.4	609.3	608.9
Proposed Overtopping	73	4,063	n/a	523	606.6	n/a	2.5	n/a	609.1
Base	100	4,300	327	530	606.7	2.9	2.9	609.6	609.6

DESIGN SPECIFICATIONS
 2010 AASHTO LRFD Bridge Design Specifications

LOADING HL-93
 Allow 50#/sq. ft. for future wearing surface.

DESIGN STRESSES
 FIELD UNITS
 f'c = 3,500 psi
 fy = 60,000 psi (Reinforcement)

SEISMIC DATA
 Seismic Performance Zone (SPZ) = 1
 Design Spectral Acceleration at 1.0 sec. (S₀₁) = 0.063g
 Design Spectral Acceleration at 0.2 sec. (S₀₂) = 0.100g
 Soil Site Class = C



GENERAL PLAN & ELEVATION
US ROUTE 6 OVER MINERAL CREEK
F.A.S. RTE. 226 SEC. 3T & 3BR-1
HENRY COUNTY
STATION 375+31.63
STRUCTURE NO. 037-0178



EXPIRES 11-30-2014

DESIGNED - <i>Fajela PK Khanna</i>	EXAMINED - <i>Jon F. [Signature]</i>	DATE - December 4, 2012
CHECKED - <i>Stephan M. Ryan</i>	PASSED - <i>[Signature]</i>	REVISOR
DRAWN - <i>h.t. duong</i>	ACTING ENGINEER OF BRIDGES AND STRUCTURES	REVISOR
CHECKED - <i>FTI SMR/GRA</i>		

STATE OF ILLINOIS
 DEPARTMENT OF TRANSPORTATION

GENERAL PLAN & ELEVATION
 STRUCTURE NO. 037-0178
 SHEET NO. 1 OF 15 SHEETS

F.A.S. RTE.	SECTION	COUNTY	TOTAL SHEETS	SHEET NO.
226	3T & 3BR-1	HENRY	210	42
CONTRACT NO. 64F25				