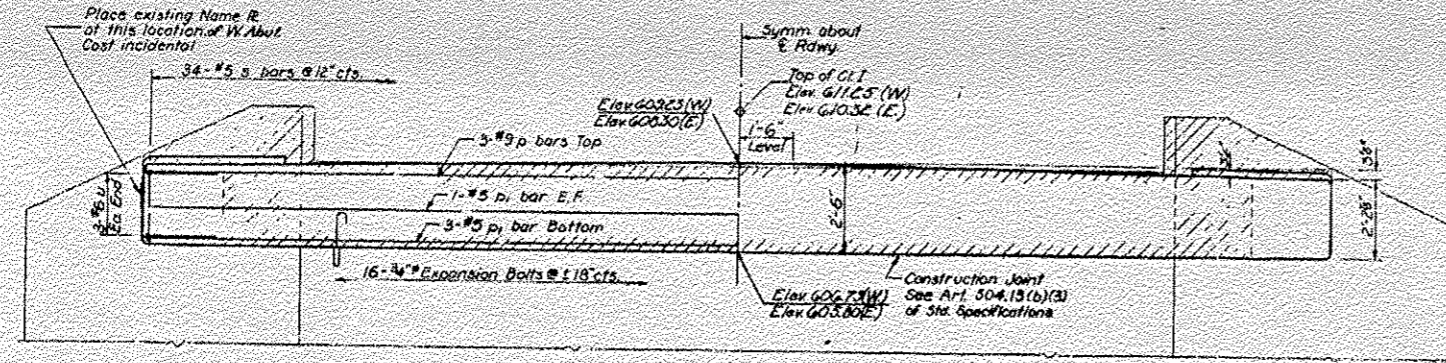


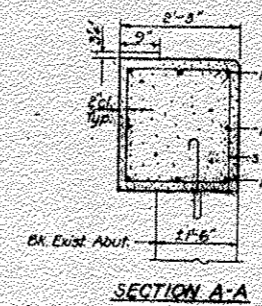
EXISTING STRUCTURE PLANS (FOR REFERENCE ONLY)

STATE OF ILLINOIS
DEPARTMENT OF TRANSPORTATION & BUILDINGS
DIVISION OF HIGHWAYS

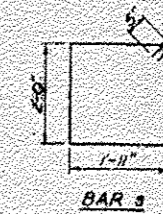
Project No.	Sheet No.	Scale	Sheet	Sheet	Sheet
U.S.G. 387	387	ASHT	A	B	5 SHEETS



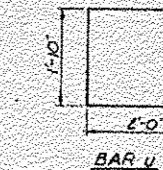
ELEVATION



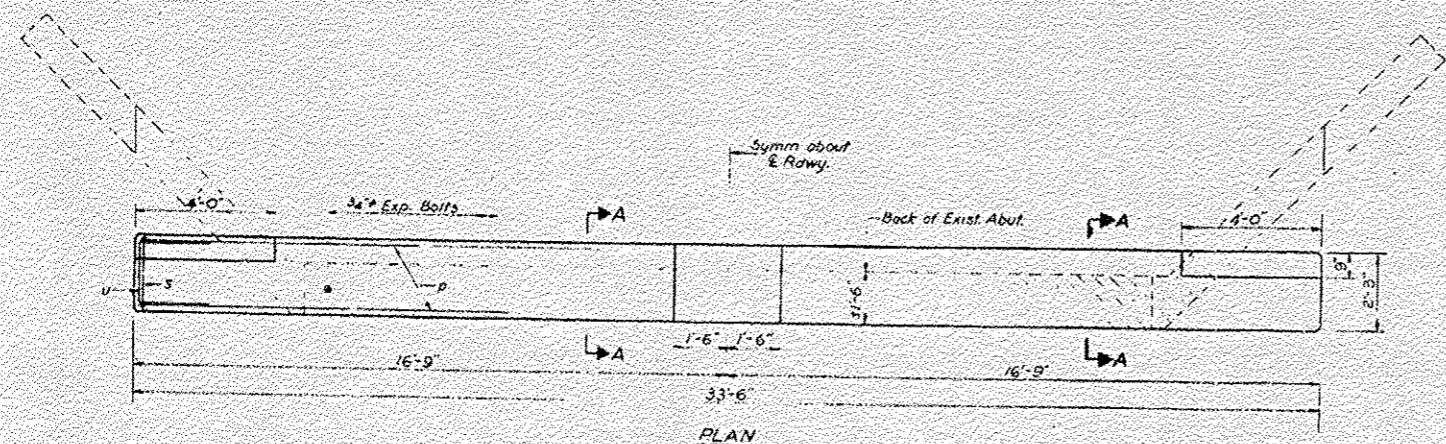
SECTION A-A



BAR 3



BAR 4



PLAN

**TWO ABUTS.
BILL OF MATERIAL**

Bar	No.	Size	Length	Shape
p	6	#9	33'-6"	—
pl	10	#5	33'-6"	—
s	68	#5	8'-8"	□
u	12	#6	5'-10"	□
Class X Concrete		Cu. Yds.	13.5	
Reinforcement Bars		Lbs.	1750	
Expansion Bolts		Each	32	
Concrete Removal		Cu. Yds.	9.0	

NOTE
Hatched area indicates Concrete Removal. Reinforcement extending into removed area shall be cleaned and incorporated into the new construction.
Expansion bolts shall be anchored in sound concrete.
All edges shall have standard 3/4" chamfers except as noted.

**ABUTMENTS
S.B.T. R.T. SEC. 3 BR
HENRY COUNTY
STA 477+86**

DESIGNED	18
CHECKED	16
DRAWN	J.C. Armstrong
CHECKED	
EXAMINED	
PASSED	
APPROVED	

A-10

