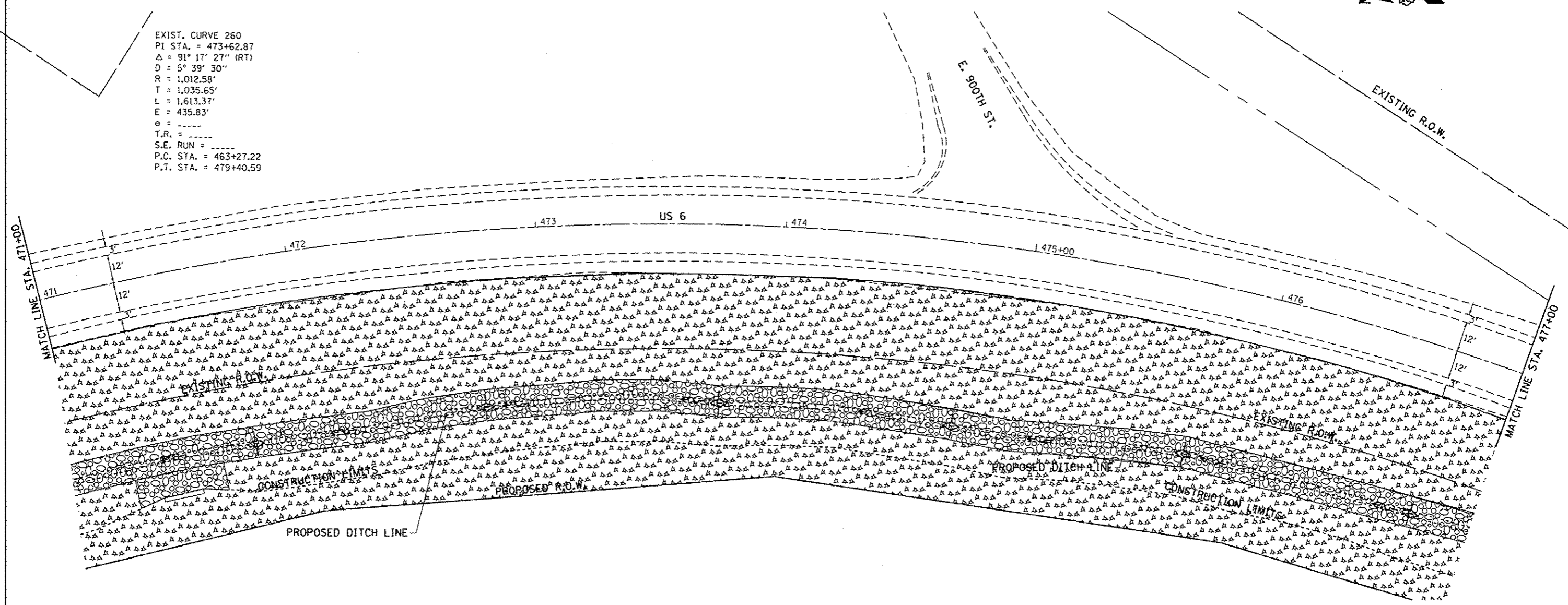


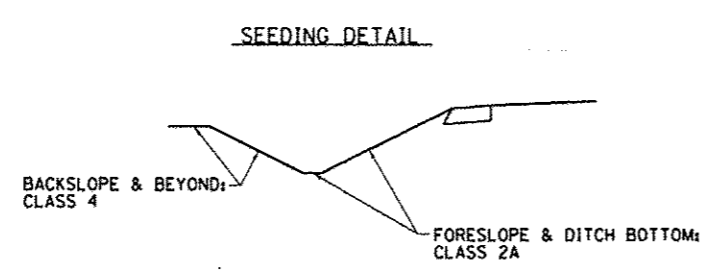
# EROSION CONTROL DETAILS



EXIST. CURVE 260  
 PI STA. = 473+62.87  
 $\Delta = 91^\circ 17' 27''$  (RT)  
 $D = 5^\circ 39' 30''$   
 $R = 1,012.58'$   
 $T = 1,035.65'$   
 $L = 1,613.37'$   
 $E = 435.83'$   
 $\theta = \dots$   
 $T.R. = \dots$   
 $S.E. RUN = \dots$   
 $P.C. STA. = 463+27.22$   
 $P.T. STA. = 479+40.59$



- = MULCH METHOD 3
- = TEMPORARY DITCH CHECKS
- = EROSION CONTROL BLANKET
- = PERIMETER EROSION BARRIER
- = INLET PIPE PROTECTION
- = RIP RAP
- = TURF REINFORCEMENT MAT



FILE NAME =	USER NAME = cushmanbw	DESIGNED -	REVISED -	<b>STATE OF ILLINOIS DEPARTMENT OF TRANSPORTATION</b>	<b>EROSION CONTROL DETAILS</b>	F.A.S. RTE. 226	SECTION 3T & 3BR-1	COUNTY HENRY	TOTAL SHEETS 210	SHEET NO. 84	
Plot Scale = 20,00000 / in.	Checked =	Revised =	Revised =			SCALE: SHEET OF SHEETS STA. TO STA.		CONTRACT NO. 64F25			
Plot Date = Fri Oct 19 13:59:54 2012	Date =	Revised =	Revised =			ILLINOIS FED. AID PROJECT					