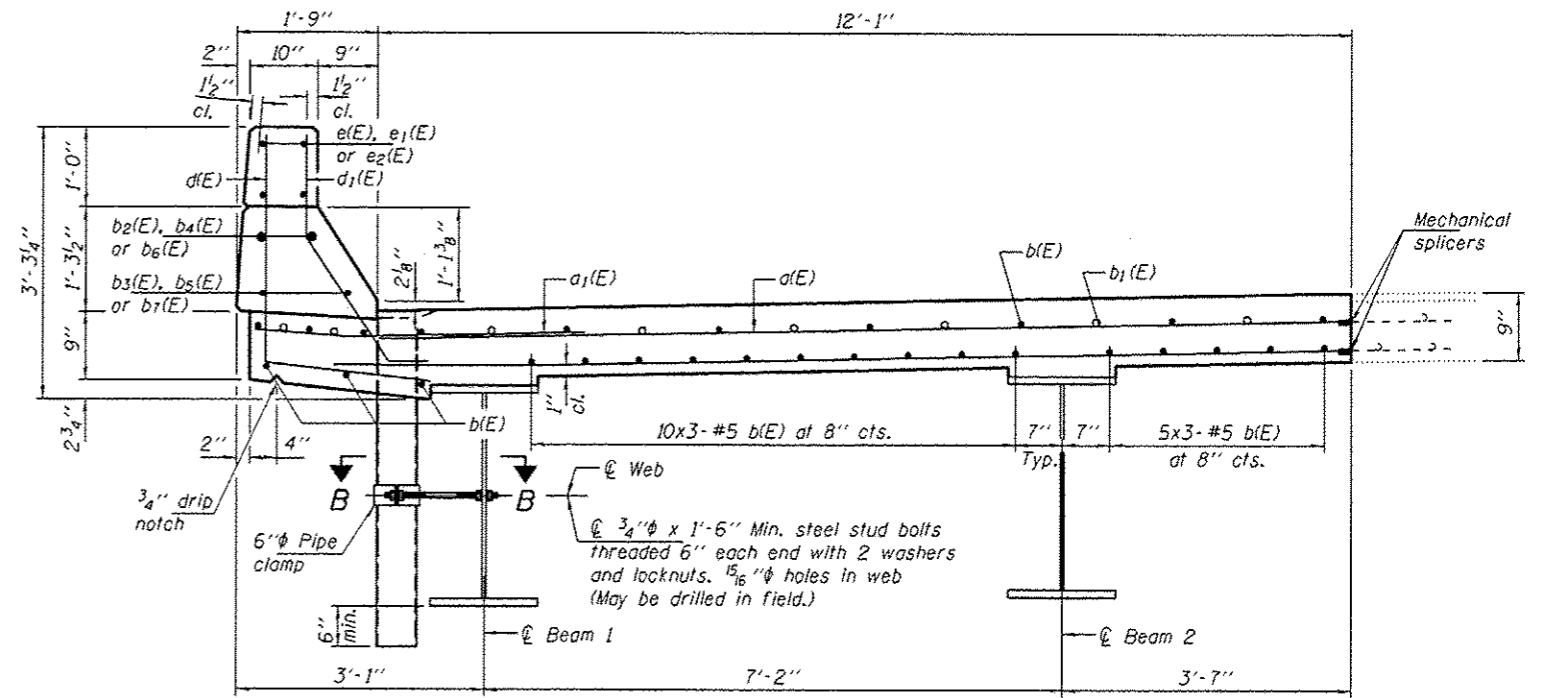
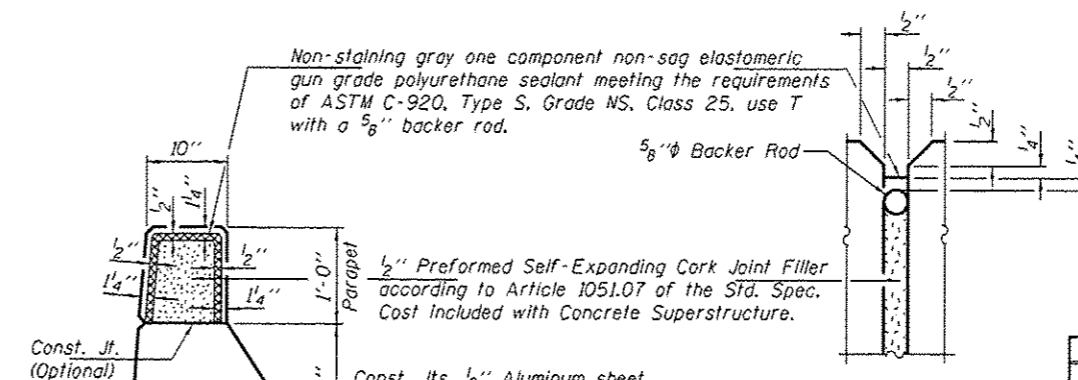


REPAIR F

Notes:
Hatched area indicates Concrete Removal.
Perimeters of concrete removal areas shall be saw cut 3/4" prior to the removal of concrete.



SECTION A-A

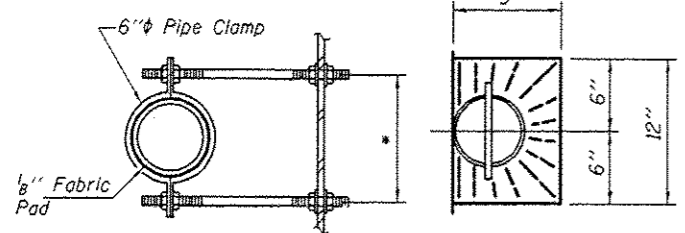


PARAPET JOINT DETAILS

BILL OF MATERIAL

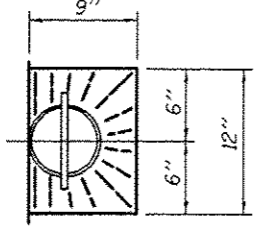
Bar	No.	Size	Length	Shape
a1(E)	156	#6	12'-9"	—
a2(E)	38	#6	4'-0"	—
b1(E)	102	#5	17'-9"	—
b2(E)	15	#6	37'-0"	—
b3(E)	2	#8	5'-8"	—
b4(E)	2	#5	5'-8"	—
b5(E)	4	#8	14'-8"	—
b6(E)	4	#5	14'-8"	—
b7(E)	2	#8	9'-1"	—
b7(E)	2	#5	9'-1"	—
d1(E)	46	#4	4'-9"	J
d2(E)	46	#5	3'-9"	J
d2(E)	10	#4	2'-1"	□
e1(E)	4	#4	5'-8"	—
e2(E)	8	#4	14'-8"	—
e2(E)	4	#4	9'-1"	—
Mechanical Splicers		Each	240	
Concrete Removal		Cu. Yd.	22.2	
Concrete Superstructure		Cu. Yd.	22.3	
Reinforcement Bars, Epoxy Coated		Lbs.	6730	

Bars indicated thus 13 x 3-#5 etc. indicates 13 lines of bars with 3 lengths per line.

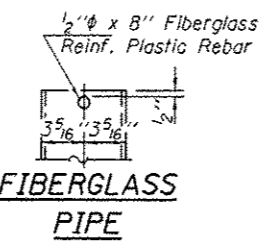


SECTION B-B

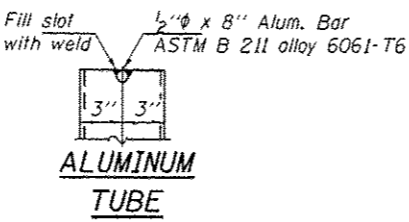
* Dimension as required by Pipe Clamp



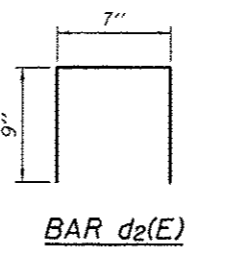
TOP PLAN



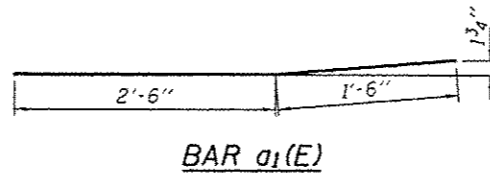
FIBERGLASS PIPE



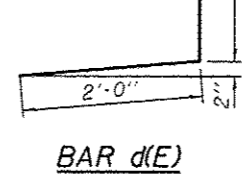
ALUMINUM TUBE



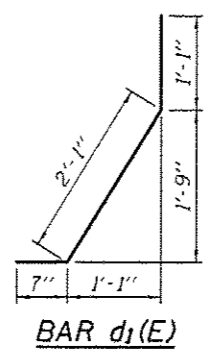
BAR d2(E)



BAR a1(E)



BAR d(E)



BAR d1(E)

Notes:
Drains shall be located clear of all diaphragms.
The exterior surfaces of the floor drains shall be painted with the finish coat as specified in the special provisions for Cleaning and Painting New Metal Structures. The exterior surfaces of the drains shall be cleaned according to the Society of Protective Coatings Spec. SSPC-SP1 prior to painting.
Fiberglass pipe shall conform to ASTM D 2996, with short-time rupture strength hoop tensile stress of 30,000 p.s.i. minimum.
Galvanize clamping device according to AASHTO M232. Cost of clamping device and inserts is included with Floor Drains.