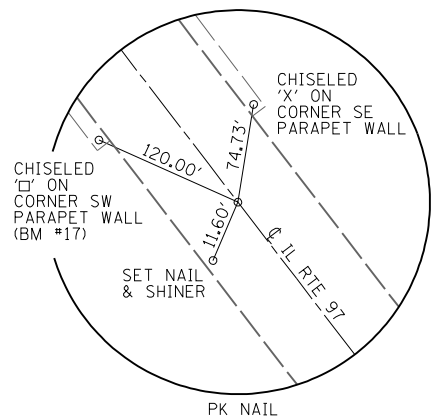
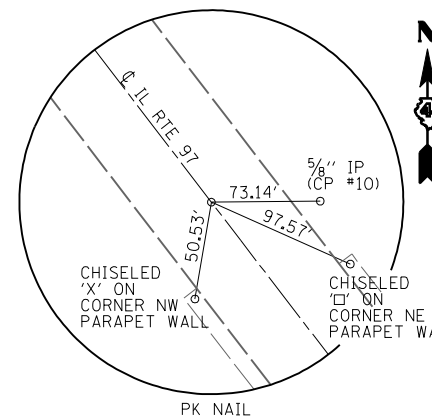


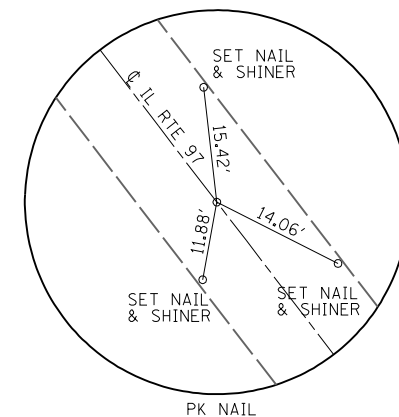
PT STA 1952+34.26
 N: 1,498,167.0080
 E: 2,301,474.9380



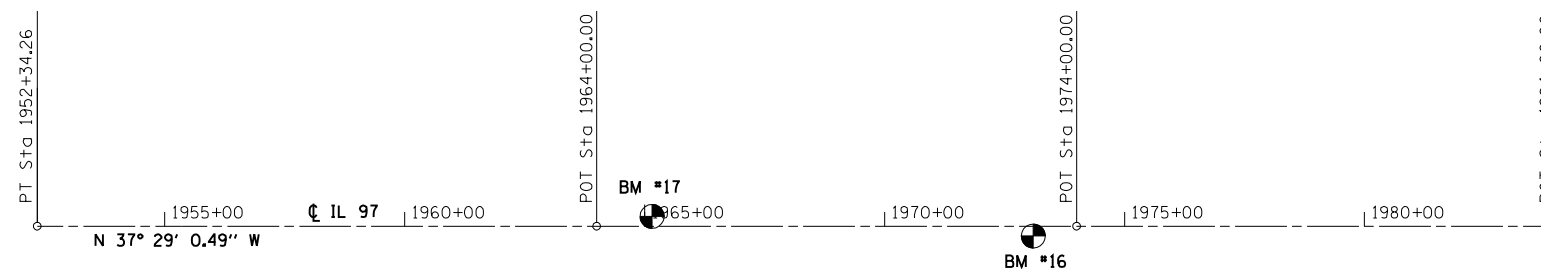
POT STA 1964+00.00
 N: 1,499,092.0571
 E: 2,300,765.5468



POT STA 1974+00.00
 N: 1,499,885.5860
 E: 2,300,157.0142

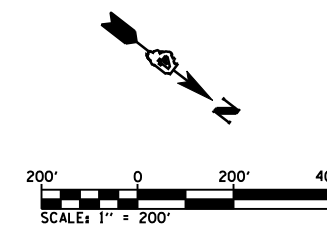


POT STA 1984+00.00
 N: 1,500,679.1150
 E: 2,299,548.4817



BM #17- CHISELED "X"
 ON PARAPET WALL AT
 SW CORNER OF STRUCTURE
 STA. 1965+15.37, 20.71' LT
 ELEVATION 562.09

BM #16- CHISELED "X"
 ON PARAPET WALL AT
 NE CORNER OF STRUCTURE
 STA. 1973+09.86, 20.58' RT
 ELEVATION 562.08



FILE NAME =
 D468759-sht-alignment.dgn

USER NAME = default
 PLOT TIME = 8:54:15 AM
 PLOT SCALE = 400.0000' / IN.
 PLOT DATE = 8/9/2013

DESIGNED - RGV
 DRAWN - RGV
 CHECKED - BPS
 DATE -

REVISED -
 REVISED -
 REVISED -
 REVISED -

**STATE OF ILLINOIS
 DEPARTMENT OF TRANSPORTATION**

ALIGNMENT TIES & BENCHMARKS

SCALE: 1"=200' SHEET 1 OF 1 SHEETS STA. TO STA.

F.A.P. RTE.	SECTION	COUNTY	TOTAL SHEETS	SHEET NO.
626	(44-B-1) BR	KNOX	122	19
CONTRACT NO. 68759				
ILLINOIS FED. AID PROJECT				