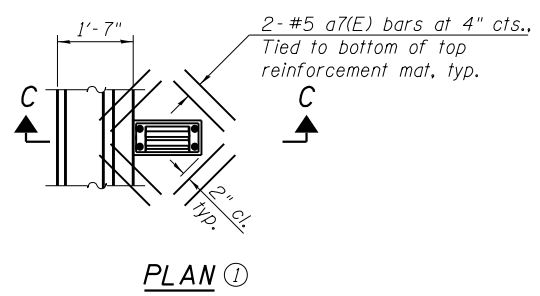
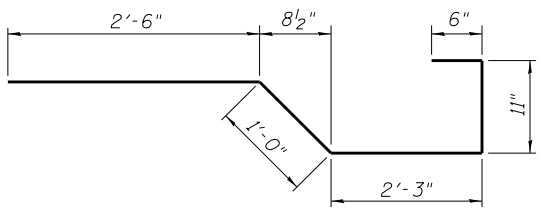


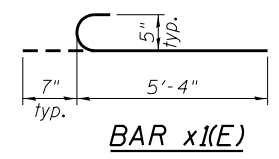
SECTION C-C



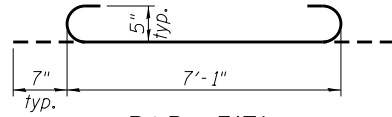
PLAN 1



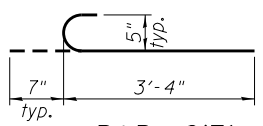
BAR x(E)



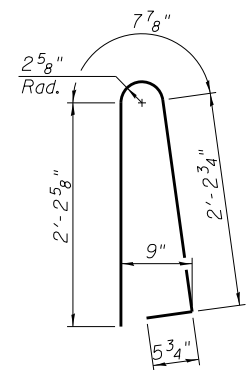
BAR x1(E)



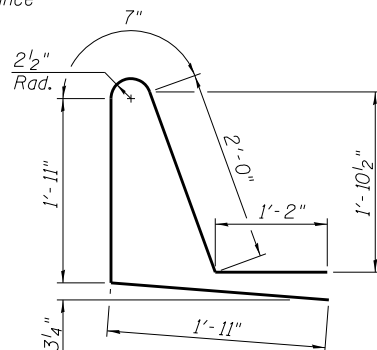
BAR a3(E)



BAR a6(E)



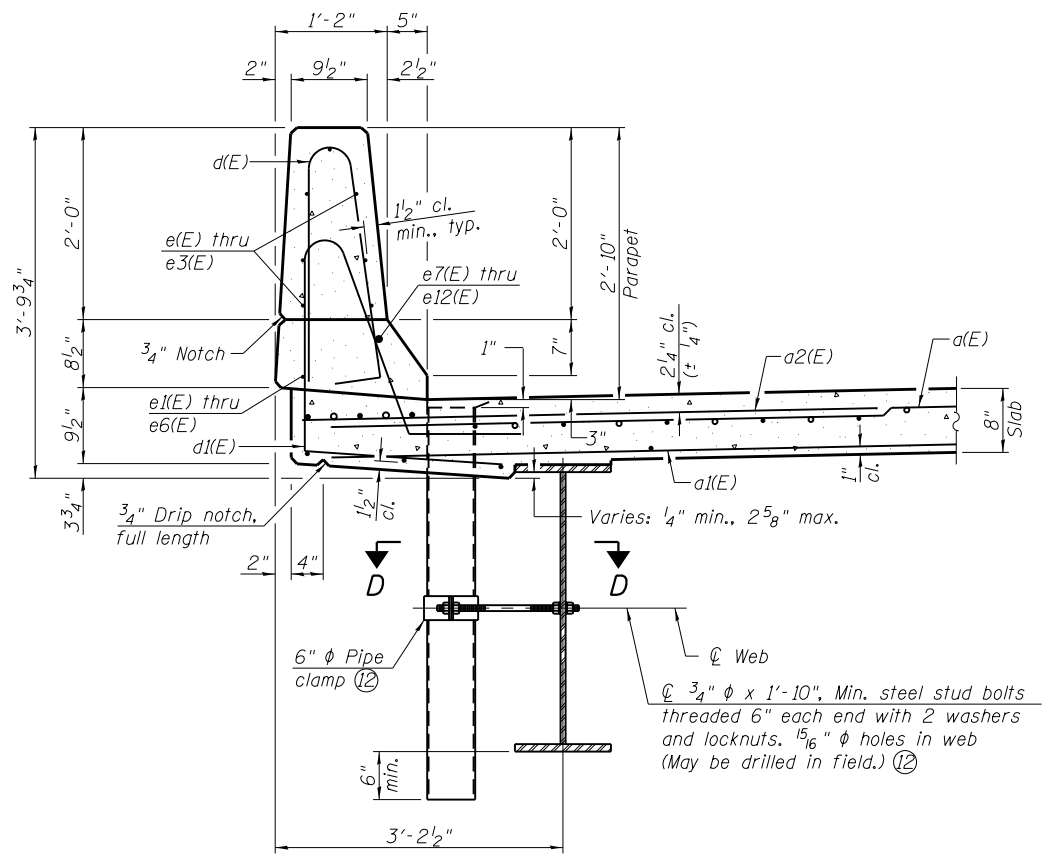
BAR d(E)



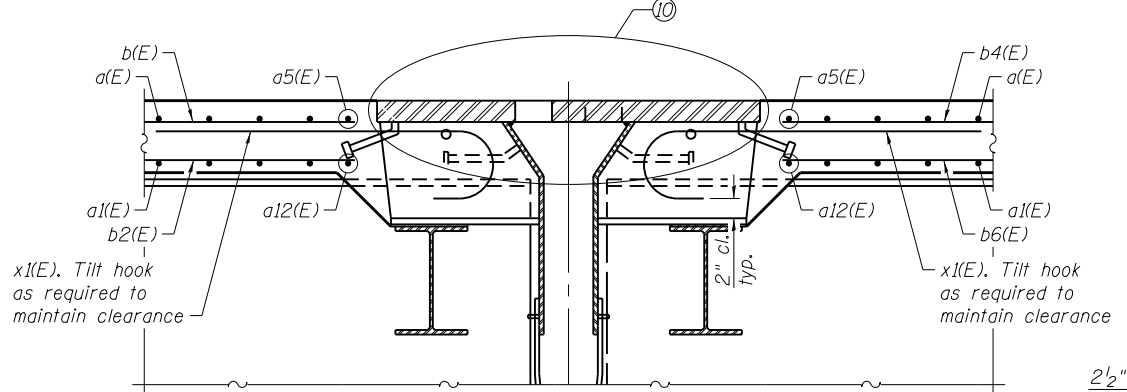
BAR d1(E)

**SUPERSTRUCTURE
BILL OF MATERIAL**

Bar	No.	Size	Length	Shape
a(E)	2910	#5	17'-1"	—
a1(E)	2038	#5	16'-9"	—
a2(E)	2882	#6	6'-6"	—
a3(E)	32	#5	8'-3"	U
a4(E)	4	#5	18'-1"	—
a5(E)	24	#5	22'-0"	—
a6(E)	16	#5	3'-11"	U
a7(E)	160	#5	1'-6"	—
a12(E)	4	#5	21'-8"	—
b(E)	608	#5	29'-11"	—
b1(E)	204	#6	22'-0"	—
b2(E)	476	#5	28'-4"	—
b3(E)	102	#6	21'-2"	—
b4(E)	570	#5	29'-6"	—
b5(E)	204	#6	29'-1"	—
b6(E)	448	#5	27'-10"	—
d(E)	1858	#5	5'-7"	L
d1(E)	1858	#5	7'-7"	L
e(E)	448	#4	17'-0"	—
e1(E)	64	#4	15'-7"	—
e2(E)	32	#4	15'-2"	—
e3(E)	148	#4	19'-5"	—
e4(E)	32	#4	23'-3"	—
e5(E)	16	#4	27'-6"	—
e6(E)	10	#4	25'-7"	—
e7(E)	8	#8	15'-7"	—
e8(E)	4	#8	15'-2"	—
e9(E)	8	#8	19'-5"	—
e10(E)	24	#8	32'-5"	—
e11(E)	16	#8	29'-11"	—
e12(E)	8	#8	33'-10"	—
x(E)	52	#5	7'-2"	U
x1(E)	60	#5	5'-11"	U
Concrete Superstructure		Cu. Yd.	1,005.6	
Reinforcement Bars, Epoxy Coated		Pound	239,600	

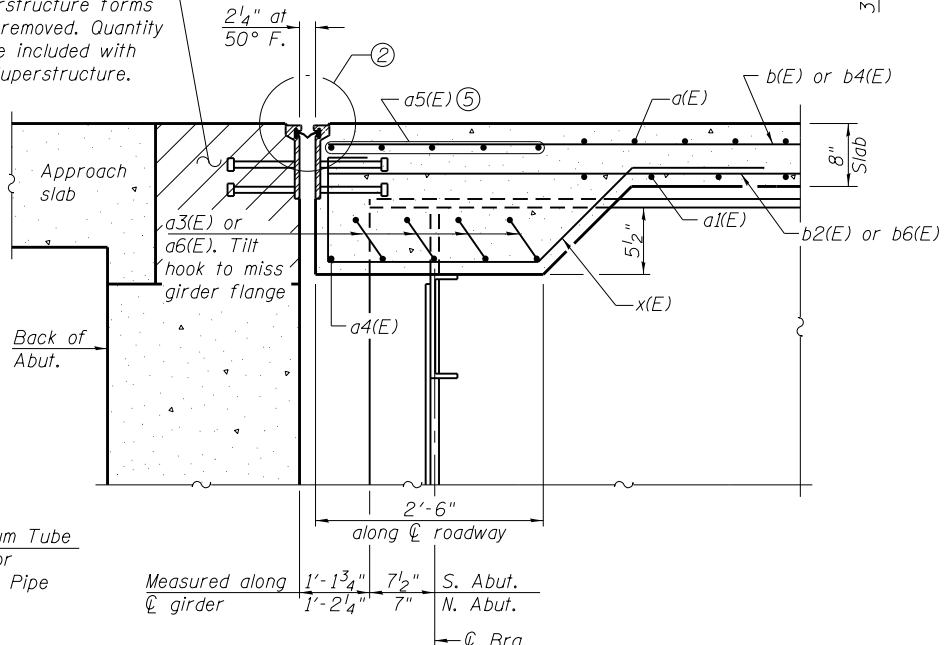


SECTION THRU PARAPET
(Showing 6" φ floor drains) (4)(11)

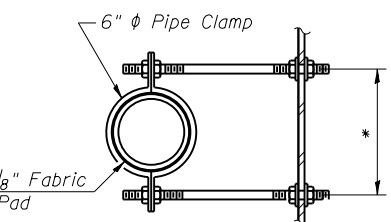


SECTION B-B

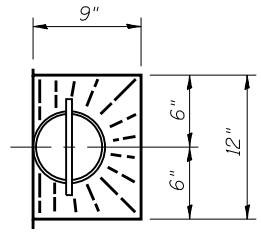
Hatched area to be poured after superstructure forms have been removed. Quantity of concrete included with Concrete Superstructure.



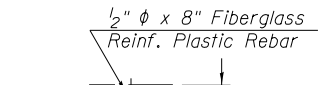
SECTION A-A



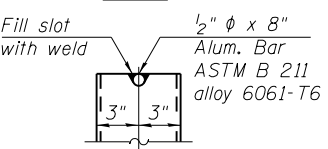
SECTION D-D
*Dimension as required by Pipe Clamp



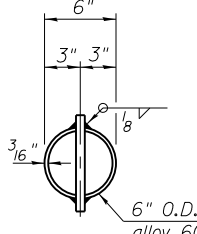
TOP PLAN



FIBERGLASS PIPE



ALUMINUM TUBE



TOP PLAN
(Showing Aluminum Tube)

- Notes:
- 1 Cut longitudinal reinforcement to clear drainage scuppers.
 - 2 For details of expansion joint, see sheet 25 of 62.
 - 3 For location of drainage scuppers, see sheet 1 of 62.
 - 4 For details of drainage scuppers, see sheet 24 of 62.
 - 5 For location of floor drains, see sheet 1 of 62.
 - 6 Place 5 a5(E) bars under longitudinal bars as shown in Section A-A.
 - 7 Drains shall be located clear of all diaphragms and cross frames.
 - 8 Floor drains need not be painted.
 - 9 Fiberglass pipe shall conform to ASTM D 2996, with short-time rupture strength hoop tensile stress of 30,000 p.s.i. minimum.
 - 10 Galvanize clamping device according to AASHTO M232. Cost of clamping device and inserts is included with Floor Drains.
 - 11 For details of finger plate expansion joint, see sheets 26 and 27 of 62.
 - 12 6" φ floor drains shown. Drainage scuppers similar.
 - 13 At 6" φ floor drains only. Omit at Drainage Scuppers, DS-II.



OATES ASSOCIATES, Inc.
100 Lamar Court, Suite 100
Columbia, MD 21046
Tel: 410-326-2200
Fax: 410-326-2201

USER NAME =
DESIGNED - MAG
CHECKED - SUN
PLOT SCALE =
DRAWN - MAG
PLOT DATE =
CHECKED - SUN

DESIGNED - MAG
CHECKED - SUN
DRAWN - MAG
CHECKED - SUN

REVISED
REVISED
REVISED
REVISED

**STATE OF ILLINOIS
DEPARTMENT OF TRANSPORTATION**

**SUPERSTRUCTURE DETAILS
STRUCTURE NO. 048-0100**

SHEET NO. 20 OF 62 SHEETS

F.A.P. RTE.	SECTION	COUNTY	TOTAL SHEETS	SHEET NO.
626	(44-B-1)BR	KNOX	122	50
CONTRACT NO. 68759				

ILLINOIS FED. AID PROJECT