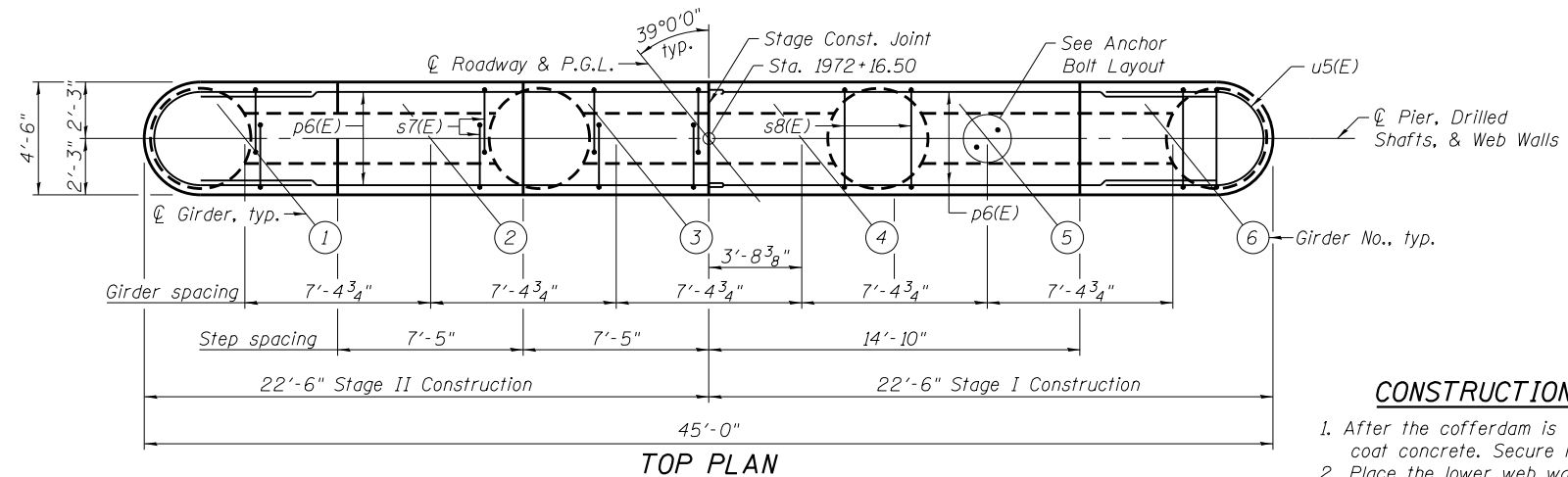


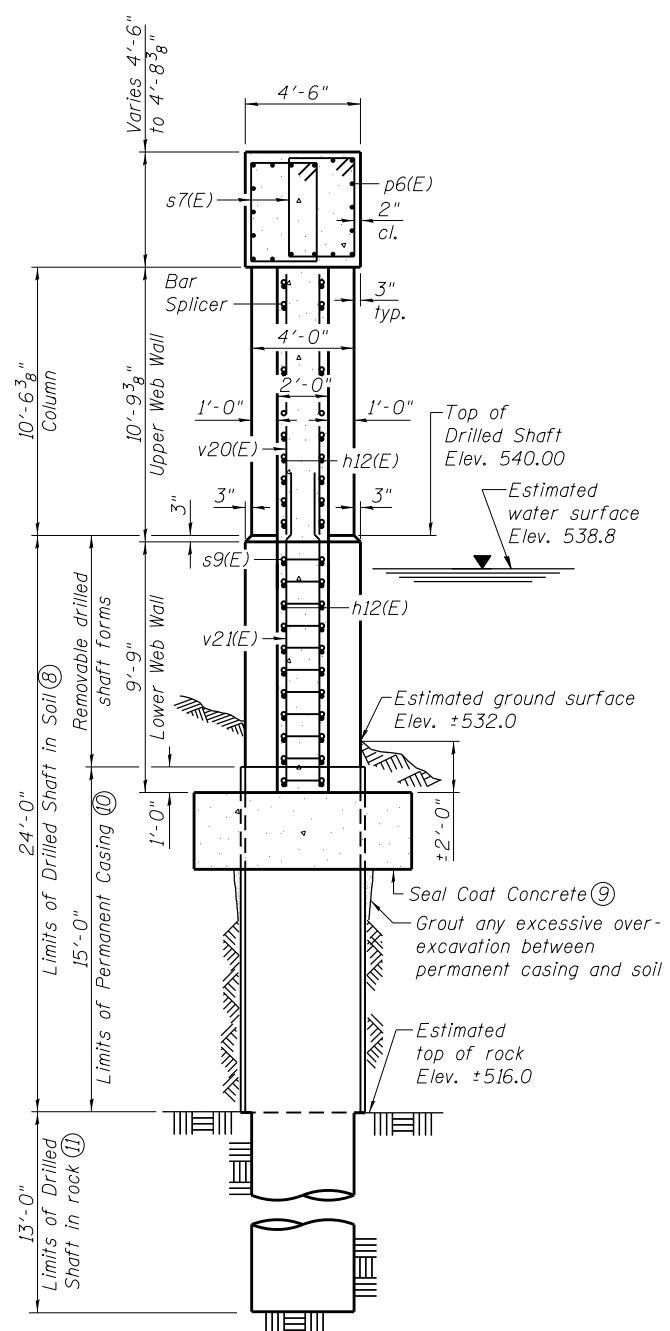
ANCHOR BOLT LAYOUT ③



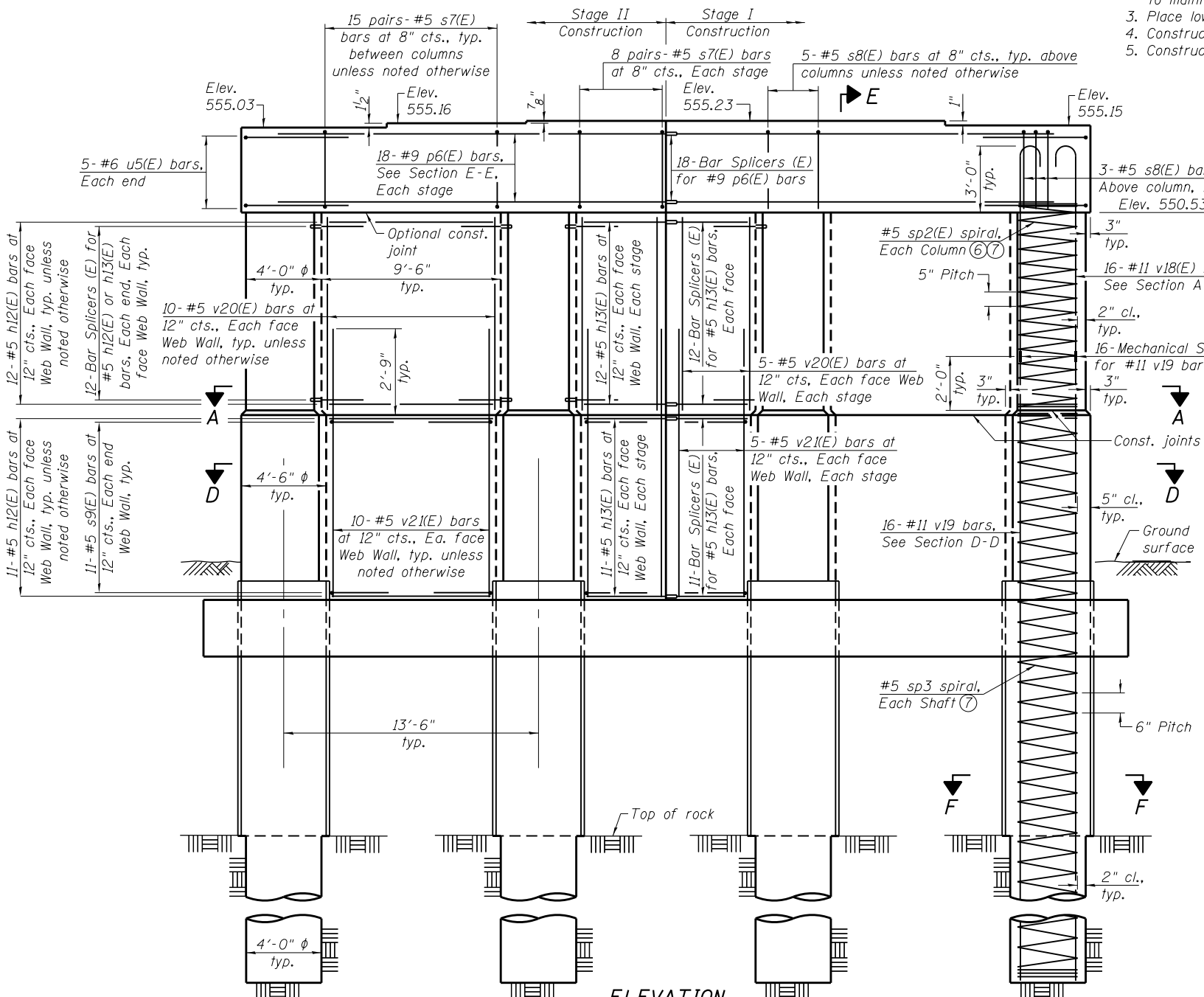
TOP PLAN

CONSTRUCTION SEQUENCE FOR WEB WALL

1. After the cofferdam is dewatered, set lower web wall forms to bear on seal coat concrete. Secure in place with struts or tie forms together as required.
2. Place the lower web wall reinforcement cage into the forms using spacers to maintain proper clearances.
3. Place lower web wall concrete.
4. Construct Columns.
5. Construct upper web walls.



SECTION E-E



ELEVATION
(Looking North)

- Notes:
- ① Cast steps monolithically with cap.
 - ② Minimum lap for epoxy coated spirals = 3'-9" Minimum lap for non epoxy coated spirals = 2'-6"
 - ③ Space reinforcement in cap to miss anchor bolts.
 - ④ For details of Bar Splicers and Mechanical Splicers, see sheet 51 of 62.
 - ⑤ For Section A-A, D-D, and F-F, bar details, and Bill of Material, see sheet 49 of 62.
 - ⑥ Extend spiral 2" into pier cap.
 - ⑦ Provide 1/2 extra turns top and bottom. Provide min. 4-#4 spacers or equivalent.
 - ⑧ If the prevailing water surface elevation during construction is consistently different than estimated on the plans, the Contractor may propose an adjustment to the top of the drilled shaft elevation as part of their installation procedure. The top of all drilled shaft shall be constructed to the same elevation and extend above the prevailing water surface. The quantities and reinforcement detailing are based on the top of shaft and the estimated elevations shown.
 - ⑨ For details of Cofferdam (Type 2) and Seal Coat Concrete, see sheet 5 of 62
 - ⑩ Contractor is responsible for determining the casing thickness and the actual tip elevation to be used. See Article 516.06(d) of the Standard Specifications. Pay limits for the Permanent Casing are based on the minimum length shown.
 - ⑪ Methods of drilling that produce a smooth rock socket are not allowed.



USER NAME =	DESIGNED - JAD	REVISED
PLOT SCALE =	CHECKED - SUN	REVISED
PLOT DATE =	DRAWN - DBB	REVISED
	CHECKED - JAD	REVISED

STATE OF ILLINOIS
DEPARTMENT OF TRANSPORTATION

PIER 6 DETAILS
STRUCTURE NO. 048-0100

SHEET NO. 48 OF 62 SHEETS

F.A.P. RTE.	SECTION	COUNTY	TOTAL SHEETS	SHEET NO.
626	(44-B-1)BR	KNOX	122	78
CONTRACT NO. 68759				

ILLINOIS FED. AID PROJECT