

**INDEX OF SHEETS**

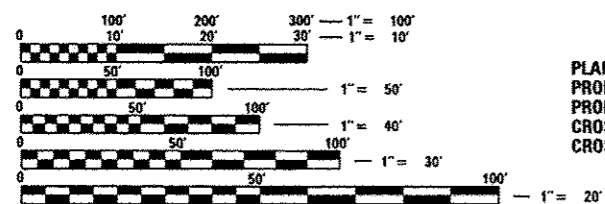
- 1 COVER SHEET
- 2-3 GENERAL NOTES AND COMMITMENTS
- 4 STATUS OF UTILITIES
- 5-13 SUMMARY OF QUANTITIES
- 14-16 TYPICAL SECTIONS
- 17-18 SCHEDULES OF QUANTITIES
- 19 ALIGNMENT TIES & BENCHMARKS
- 20-21 PLAN AND PROFILE SHEETS
- 22-27 SUGGESTED STAGES OF CONSTRUCTION AND TRAFFIC CONTROL
- 28 EROSION CONTROL & PAVEMENT MARKING SHEET
- 29 REMOVAL PLAN SHEET
- 30 RIGHT-OF-WAY PLAN SHEET
- 31-92 STRUCTURE PLANS AND STRUCTURE BORINGS
- 93-96 CONSTRUCTION DETAILS
- 97-105 DISTRICT 4 STANDARDS
- 106-122 CROSS SECTIONS

**HIGHWAY STANDARDS**

- 000001-06 STANDARD SYMBOLS, ABBREVIATIONS AND PATTERNS
- 001001-02 AREAS OF REINFORCEMENT BARS
- 001006 DECIMAL OF AN INCH AND OF A FOOT
- 280001-07 TEMPORARY EROSION CONTROL SYSTEMS
- 420401-09 BRIDGE APPROACH PAVEMENT CONNECTOR
- 482001-02 HMA SHOULDER ADJACENT TO FLEXIBLE PAVEMENT
- 515001-03 NAME PLATE FOR BRIDGES
- 542401-01 METAL END SECTIONS FOR PIPE CULVERTS
- 601101-01 CONCRETE HEADWALL FOR PIPE DRAIN
- 606001-05 CONCRETE CURB TYPE B AND COMBINATION CONCRETE CURB AND GUTTER
- 610001-06 SHOULDER INLET WITH CURB
- 630001-10 STEEL PLATE BEAM GUARDRAIL
- 630301-06 SHOULDER WIDENING FOR TYPE 1 (SPECIAL) GUARDRAIL TERMINALS
- 631011-09 TRAFFIC BARRIER TERMINAL, TYPE 2
- 631031-11 TRAFFIC BARRIER TERMINAL, TYPE 6
- 635006-03 REFLECTOR AND TERMINAL MARKER PLACEMENT
- 635011-02 REFLECTOR MARKER AND MOUNTING DETAILS
- 701001-02 OFF-RD OPERATIONS, 2L, 2W, MORE THAN 15' (4.5 m) AWAY
- 701006-04 OFF-RD OPERATIONS, 2L, 2W 15' (4.5 m) TO 24" (600 mm) FROM PAVEMENT EDGE
- 701011-03 OFF-RD MOVING OPERATIONS, 2L, 2W, DAY ONLY
- 701201-04 LANE CLOSURE, 2L, 2W, DAY ONLY, FOR SPEEDS > 45 MPH
- 701301-04 LANE CLOSURE, 2L, 2W, SHORT TIME OPERATIONS
- 701306-03 LANE CLOSURE, 2L, 2W, SLOW MOVING OPERATIONS DAY ONLY, FOR SPEEDS > 45 MPH
- 701311-03 LANE CLOSURE, 2L, 2W, MOVING OPERATIONS-DAY ONLY
- 701321-13 LANE CLOSURE, 2L, 2W, BRIDGE REPAIR WITH BARRIER
- 701326-04 LANE CLOSURE, 2L, 2W, PAVEMENT WIDENING, FOR SPEEDS > 45 MPH
- 701901-02 TRAFFIC CONTROL DEVICES
- 704001-07 TEMPORARY CONCRETE BARRIER
- 780001-03 TYPICAL PAVEMENT MARKINGS

**DISTRICT 4 STANDARDS**

- 205001-D4 SLOPE STEPS DETAIL
- 406101-D4 BUTT JOINTS
- 440001-D4 HOT MIX ASPHALT SURFACE REMOVAL (COLD MILLING)
- 601301-D4 PIPE ELBOW
- 630101-D4 GUARDRAIL EROSION CONTROL TREATMENTS
- 667101-D4 PERMANENT SURVEY TIE & PERMANENT SURVEY MARKERS TY.I - TY.II
- 780001-D4 TYPICAL PAVEMENT MARKINGS



FULL SIZE PLANS HAVE BEEN PREPARED USING STANDARD ENGINEERING SCALES. REDUCED SIZED PLANS WILL NOT CONFORM TO STANDARD SCALES. IN MAKING MEASUREMENTS ON REDUCED PLANS, THE ABOVE SCALES MAY BE USED.

**PROJECT ENGINEER** CHRISTOPHER MAUSHARD 309-671-3453

**PROJECT MANAGER** MICHAEL HUDELSON 309-671-3466

**CONTRACT NO. 68759**  
**CATALOG NO. 033598-00D**

J.U.L.I.E.  
JOINT UTILITY LOCATION INFORMATION  
FOR EXCAVATION  
1-800-892-0123 OR 811

**STATE OF ILLINOIS**  
**DEPARTMENT OF TRANSPORTATION**  
**DIVISION OF HIGHWAYS**  
**PROPOSED**  
**HIGHWAY PLANS**

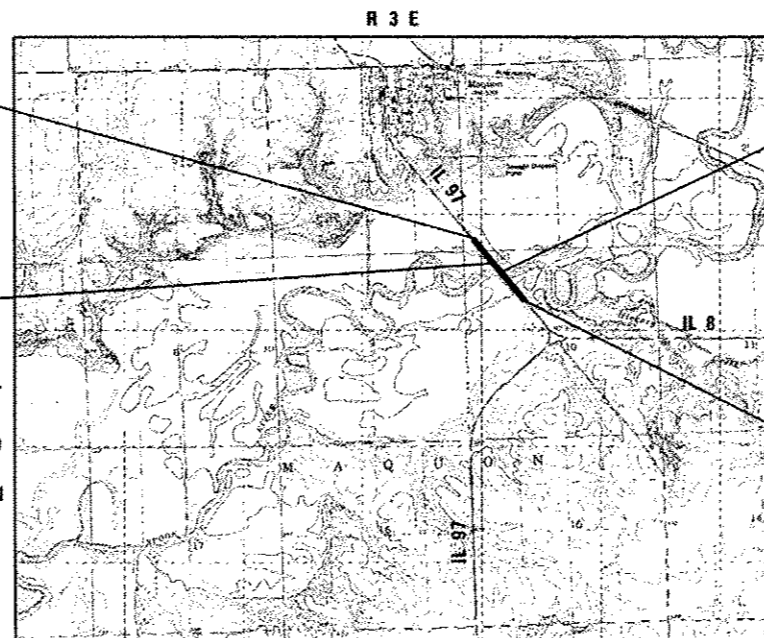
**FAP ROUTE 626 (IL 97)**  
**SECTION (44-B-1) BR**  
**PROJECT ACF-06226(007)**  
**BRIDGE REPLACEMENT**  
**KNOX COUNTY**  
**C-94-138-07**

**IL ROUTE 97 OVER SPOON RIVER**  
**REPLACEMENT OF EXISTING BRIDGE**

**END SECTION**  
**STA. 1980 + 25**

**STA. 1964 + 57.30 TO**  
**STA. 1973 + 72.70**  
**BRIDGE REPLACEMENT**

**BEGIN SECTION**  
**STA. 1958 + 80**



PROJECT INCLUDES A 7-SPAN STRUCTURE, CONSISTING OF A REINFORCED CONCRETE DECK ON STEEL PLATE GIRDER SUPERSTRUCTURE FOUNDED ON OPEN ABUTMENTS AND PILE/DRILLED SHAFT SUPPORTED PIERS  
EXIST. S. N. 048-0075  
PROP. S. N. 048-0100



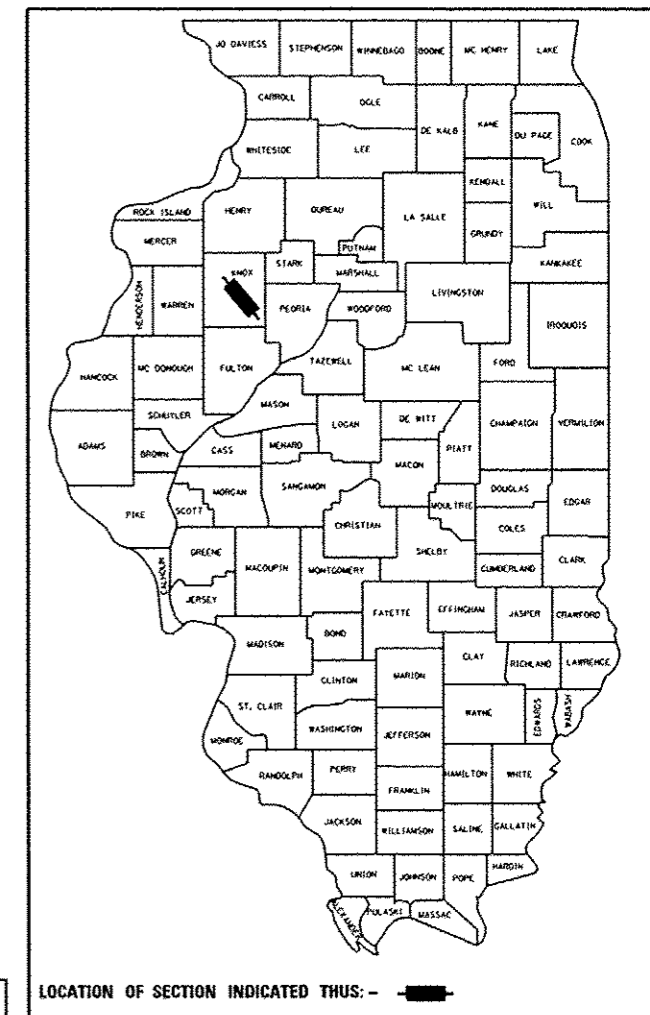
GROSS LENGTH = 2,145.00 FT. = 0.406 MILE  
NET LENGTH = 2,145.00 FT. = 0.406 MILE



*Bruce P. Schopp* 8/9/13  
Date  
BRUCE P. SCHOPP, P.E.  
License Expires 11/30/2013

F.A.P. RTE.	SECTION	COUNTY	TOTAL SHEETS	SHEET NO.
626	(44-B-1) BR	KNOX	122	1
ILLINOIS		CONTRACT NO. 68759		

D-94-093-07



LOCATION OF SECTION INDICATED THUS: -

**DESIGN DESIGNATION**

MINOR ARTERIAL (RURAL)  
CURRENT ADT: 1,800 (2011)  
DESIGN ADT: 2,200 (2031)  
DESIGN SPEED: 55 MPH  
POSTED SPEED: 55 MPH  
MU = 5.0%, SU = 5.0%

STATE OF ILLINOIS  
DEPARTMENT OF TRANSPORTATION  
DIVISION OF HIGHWAYS

SUBMITTED 8-13 2013  
*Joseph E. Crowe*  
DEPUTY DIRECTOR OF HIGHWAYS, REGION ENGINEER  
October 4 2013  
*John D. Baranzelli, P.E.*  
acting ENGINEER OF DESIGN AND ENVIRONMENT  
October 4 2013  
*Omer Osman, P.E.*  
DIRECTOR OF HIGHWAYS, CHIEF ENGINEER

**OATES ASSOCIATES**  
Engineering + Architecture  
www.oatesassociates.com

ILLINOIS  
Eastport Business Center 1  
100 Lantor Court, Suite 1  
Collinsville, IL 62234  
tel 618.345.2200  
fax 618.345.7233

MISSOURI  
Laclede Gas Building  
720 Olive, Suite 1600  
St. Louis, MO 63101  
tel 314.588.0381  
fax 314.588.9605

**PRINTED BY THE AUTHORITY**  
**OF THE STATE OF ILLINOIS**