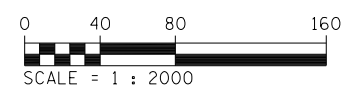
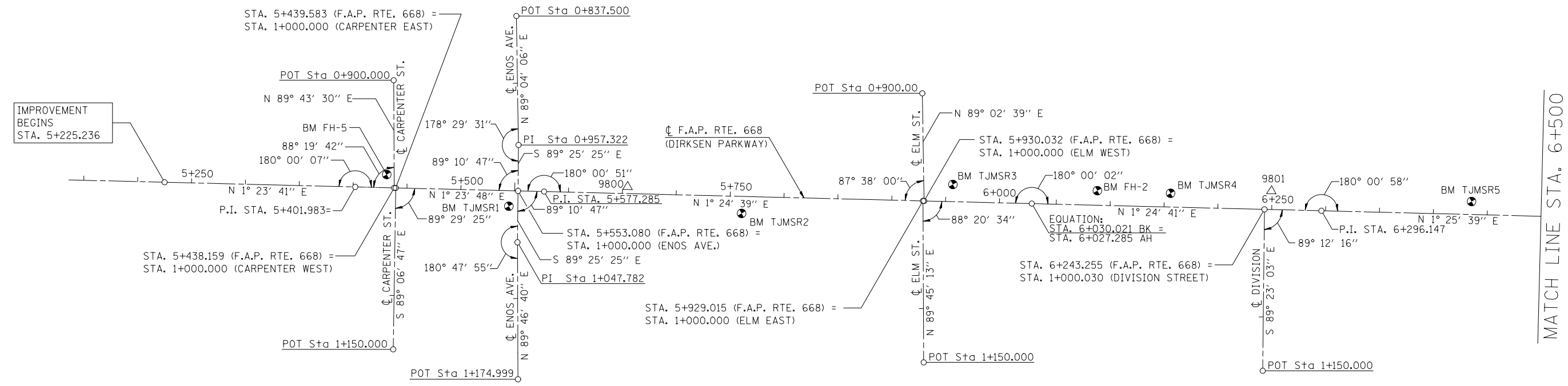


F.A.P. RTE.	SECTION	COUNTY	TOTAL SHEETS	SHEET NO.
668	28R-1	SANGAMON	354	51
STA. 5+225.000		TO STA. 6+500.000		
FED. ROAD DIST. NO.		ILLINOIS	FED. AID PROJECT	
CONTRACT NO. 72501				

FINAL SURVEY PLOTTED	BY	DATE
NOTE BOOK NO.		
AREAS CHECKED		

ORIGINAL SURVEY PLOTTED	BY	DATE
NOTE BOOK NO.		
AREAS CHECKED		



REVISIONS	
NAME	DATE

ILLINOIS DEPARTMENT OF TRANSPORTATION
 HORIZONTAL ALIGNMENT & TIES
 F.A.P. ROUTE 668 (DIRKSEN PARKWAY)
 SECTION 28R-1
 SANGAMON COUNTY

SCALE 1 : 2000
 DATE 06/2013

DRAWN BY DAS
 CHECKED BY GLW