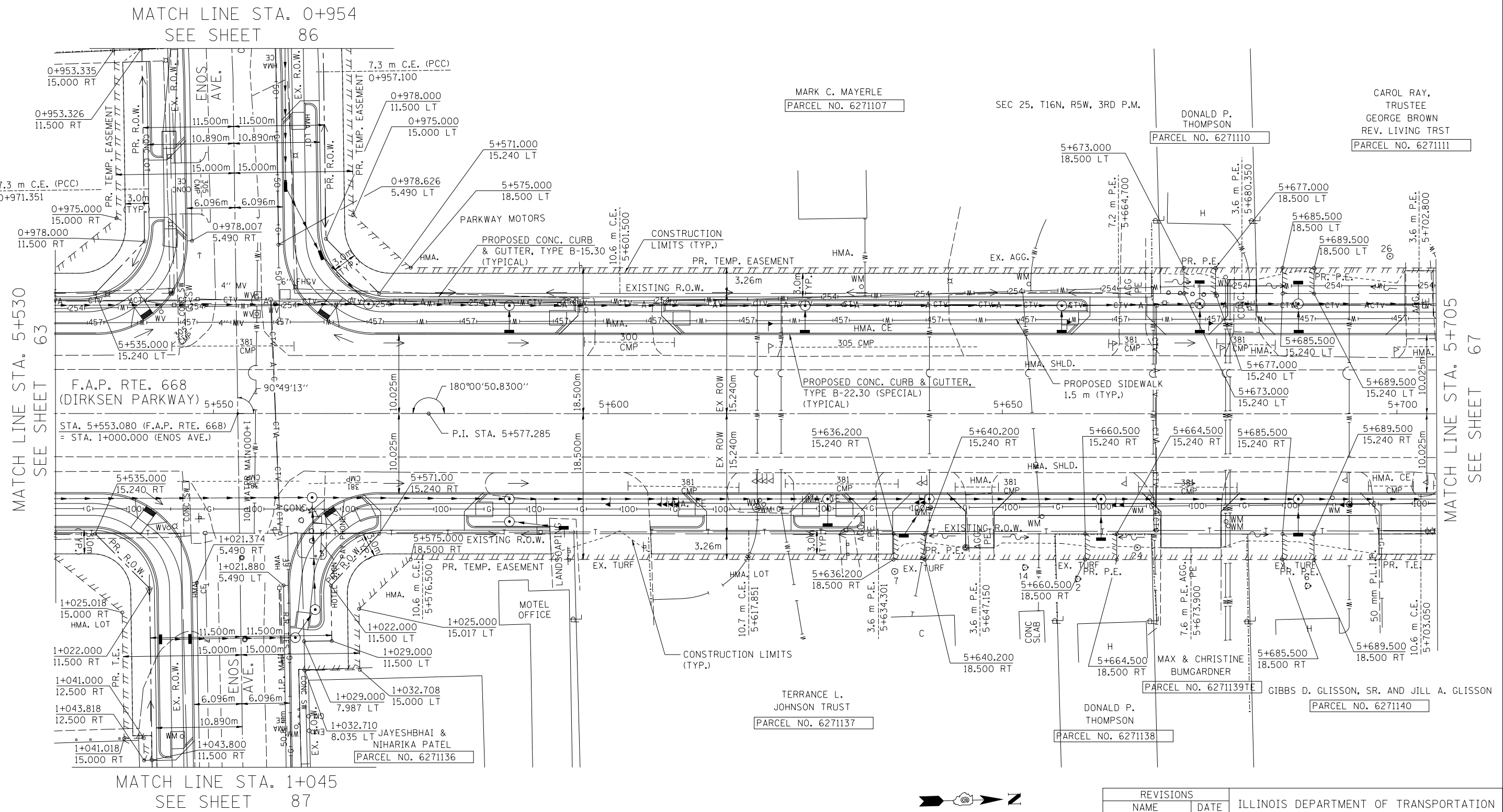


F.A.P. RTE.	SECTION	COUNTY	TOTAL SHEETS	SHEET NO.
668	28R-1	SANGAMON	354	65
STA.	5+530.000	TO STA.	5+705.000	
FED. ROAD DIST. NO.	ILLINOIS	FED. AID PROJECT		
CONTRACT NO. 72501				

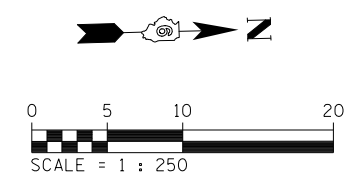
BM TJM SR #1 CHSLD 'X' IN TOP BOLT OF THE FH ON THE SE QUAD OF THE DIRKSEN PKWY & ENOS ST INTERSECTION STA. 5+544.92, 14.41m RT, ELEV 181.902m

BY	DATE
FINAL SURVEY PLOTTED	
NOTE BOOK TEMPLATE	
AREAS CHECKED	
NO.	

BY	DATE
ORIGINAL SURVEY PLOTTED	
NOTE BOOK TEMPLATE	
AREAS CHECKED	
NO.	



NOTE:  
SEE DRAINAGE PLANS FOR STATION, OFFSET, AND ELEVATION INFORMATION FOR PROPOSED CURB AND GUTTER SECTIONS BEYOND PROPOSED SIDEWALK. ALL CURB AND GUTTER POINTS ARE CALLED OUT TO THE TOP OF FACE OF CURB.



REVISIONS	
NAME	DATE

ILLINOIS DEPARTMENT OF TRANSPORTATION  
ROADWAY PLANS  
F.A.P. ROUTE 668 (DIRKSEN PARKWAY)  
SECTION 28R-1  
SANGAMON COUNTY  
SCALE 1 : 250  
DATE 06/2013  
DRAWN BY RK  
CHECKED BY FML

MATCH LINE STA. 5+530  
SEE SHEET 63

MATCH LINE STA. 5+705  
SEE SHEET 67

MATCH LINE STA. 0+954  
SEE SHEET 86

MATCH LINE STA. 1+045  
SEE SHEET 87