

F.A.P. RTE.	SECTION	COUNTY	TOTAL SHEETS	SHEET NO.
668	28R-1	SANGAMON	354	81
STA. 6+755.000		TO STA. 6+900.000		
FED. ROAD DIST. NO.		ILLINOIS	FED. AID PROJECT	
CONTRACT NO. 72501				

BM TJM SR #7 CHSLD 'X' IN TOP SE BOLT OF THE FH +/- 45m WEST OF DIRKSEN PKWY & RIDGE AVE IN FRONT OF CASEY'S GENERAL STORE  
ELEV 178.584m

GRIFFITT'S CONSTRUCTION CO., INC.

LABORER'S INTERNATIONAL UNION OF NORTH AMERICA LOCAL #477

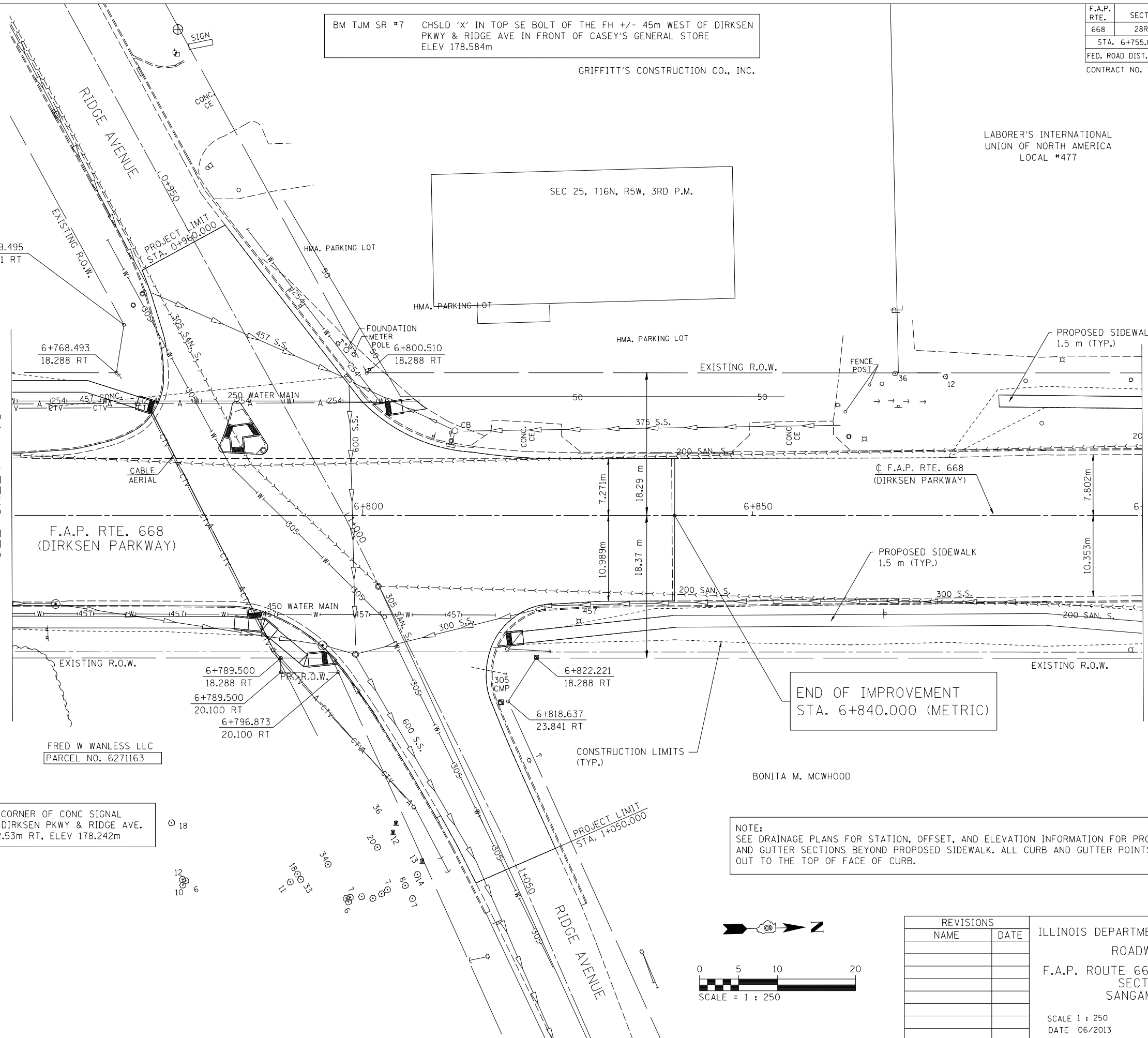
FINAL SURVEY PLOTTED	BY	DATE
NOTE BOOK TEMPLATE		
AREAS CHECKED		
NO.		

ORIGINAL SURVEY PLOTTED	BY	DATE
NOTE BOOK TEMPLATE		
AREAS CHECKED		
NO.		

MARINE BANK

MATCH LINE STA. 6+755  
SEE SHEET 79

MATCH LINE STA. 6+900  
SEE SHEET 83

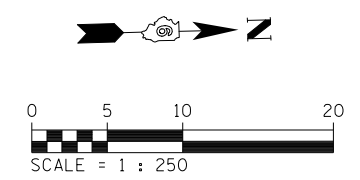


BM TJM SR #6 CHSLD 'Q' IN NW CORNER OF CONC SIGNAL FDN SE QUAD OF DIRKSEN PKWY & RIDGE AVE.  
STA. 6+782.49, 12.53m RT, ELEV 178.242m

FRED W WANLESS LLC  
PARCEL NO. 6271163

END OF IMPROVEMENT  
STA. 6+840.000 (METRIC)

NOTE:  
SEE DRAINAGE PLANS FOR STATION, OFFSET, AND ELEVATION INFORMATION FOR PROPOSED CURB AND GUTTER SECTIONS BEYOND PROPOSED SIDEWALK. ALL CURB AND GUTTER POINTS ARE CALLED OUT TO THE TOP OF FACE OF CURB.



REVISIONS	
NAME	DATE

ILLINOIS DEPARTMENT OF TRANSPORTATION  
ROADWAY PLANS  
F.A.P. ROUTE 668 (DIRKSEN PARKWAY)  
SECTION 28R-1  
SANGAMON COUNTY  
SCALE 1 : 250  
DATE 06/2013  
DRAWN BY RK  
CHECKED BY FML