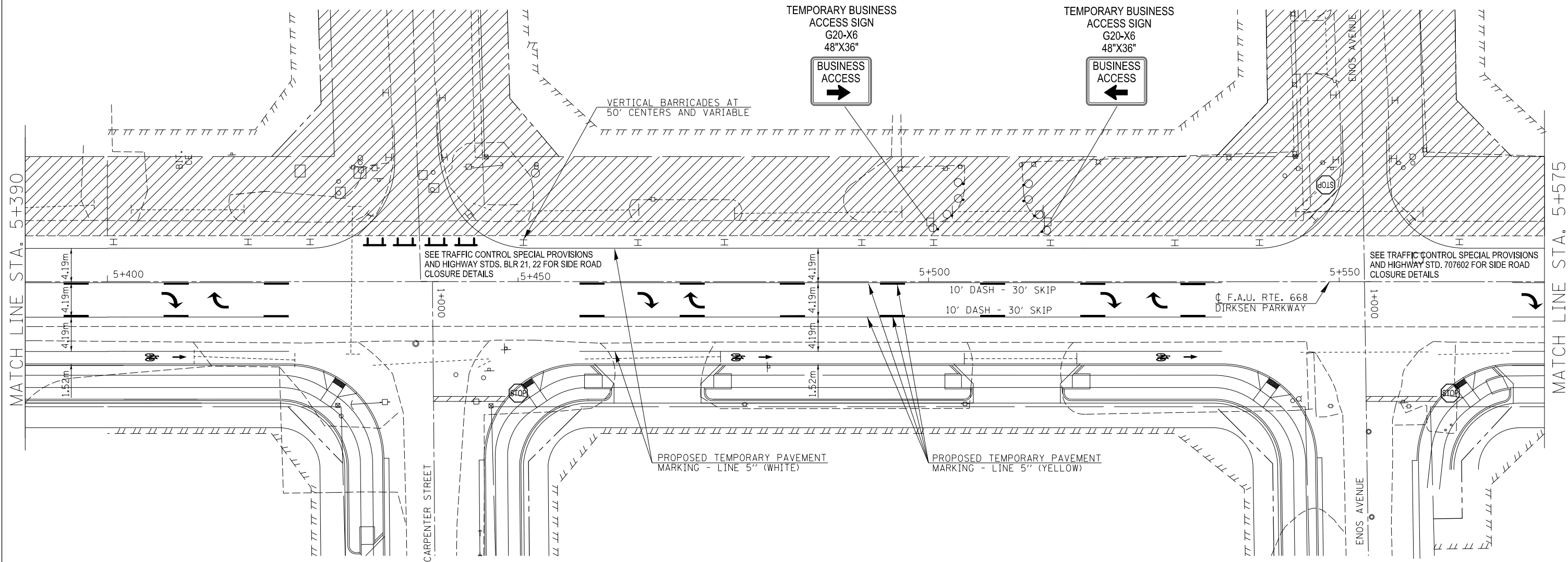


TYPICAL BUSINESS ENTRANCE DETAIL DURING CONSTRUCTION
 (ACCESS TO BUSINESSES AT ALL TIMES DURING CONSTRUCTION,
 SEE SPECIAL PROVISIONS FOR STAGED TRAFFIC CONTROL)



NOTES:

REFER TO HIGHWAY STANDARD 701602 FOR THE PLACEMENT OF TRAFFIC CONTROL SIGNING DURING CONSTRUCTION.



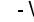




THE CONTRACTOR SHALL MAINTAIN ALL TEMPORARY PAVEMENT MARKINGS THROUGHOUT THE CONSTRUCTION STAGES OF THIS PROJECT.

ACCESS TO ALL BUSINESS AND RESIDENTIAL PROPERTIES SHALL BE PRESERVED DURING ALL STAGES OF PROPOSED CONSTRUCTION WITH APPROPRIATE SIGNAGE FOR BUSINESS ENTRANCES POSTED.

REFER TO THE SPECIAL PROVISIONS AND HIGHWAY STANDARDS BLR 21, 22 FOR SIDE ROAD CLOSURE DURING ALL STAGES OF CONSTRUCTION.

ONLY ALTERNATING SIDEROAD CLOSURES ARE ALLOWED DURING ALL STAGES OF CONSTRUCTION FOR TRAFFIC CONTROL.



-  - DESIGNATES WORK ZONE AREA DURING STAGE 1 CONSTRUCTION
-  - DRUM BARRICADE
-  - VERTICAL BARRICADE
-  - DIRECTION INDICATOR BARRICADE
-  - TYPE I OR II BARRICADE
-  - TYPE III BARRICADE
-  - STOP SIGN, TEMPORARY

FILE NAME =	USER NAME = Plotted by Scott	DESIGNED - RTS	REVISED -
...Temp Pavement Marking Sheets, Stage 2b.dgn		DRAWN -	REVISED -
\$MODELNAME\$	PLOT SCALE = 40.0000' / in.	CHECKED -	REVISED -
	PLOT DATE	DATE - 05-20-13	REVISED -

**STATE OF ILLINOIS
 DEPARTMENT OF TRANSPORTATION**

STAGE CONSTRUCTION, STAGE 2b

SCALE: SHEET 5 OF 10 SHEETS STA. TO STA.

F.A.P. RTE.	SECTION	COUNTY	TOTAL SHEETS	SHEET NO.
668	28R-1	SANGAMON	354	95
			CONTRACT NO. 72501	
ILLINOIS FED. AID PROJECT				