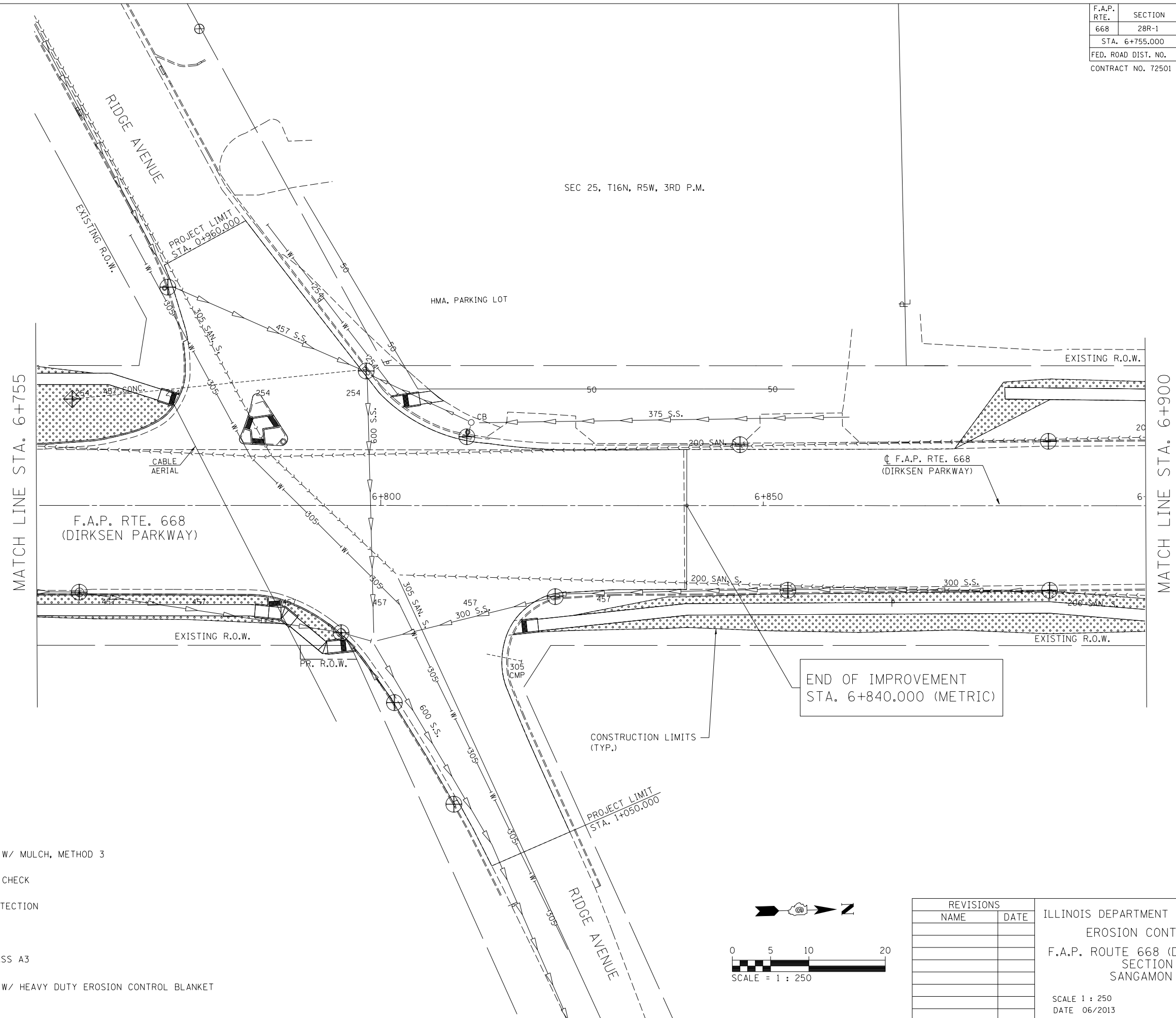


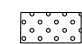
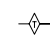



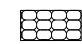
F.A.P. RTE.	SECTION	COUNTY	TOTAL SHEETS	SHEET NO.
668	28R-1	SANGAMON	354	137
STA. 6+755.000		TO STA. 6+900.000		
FED. ROAD DIST. NO.		ILLINOIS	FED. AID PROJECT	
CONTRACT NO. 72501				

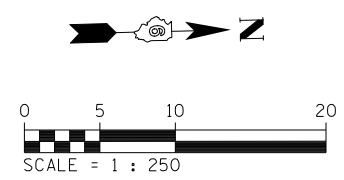
FINAL SURVEY PLOTTED	BY	DATE
NO.		
SURVEYED		
PLOTTED		
TEMPLATE		
AREAS		
CHECKED		

ORIGINAL SURVEY PLOTTED	BY	DATE
NO.		
SURVEYED		
PLOTTED		
TEMPLATE		
AREAS		
CHECKED		



LEGEND

-  SEEDING, CLASS 1 W/ MULCH, METHOD 3
-  TEMPORARY DITCH CHECK
-  INLET & PIPE PROTECTION
-  INLET FILTER
-  STONE RIPRAP CLASS A3
-  SEEDING, CLASS 1 W/ HEAVY DUTY EROSION CONTROL BLANKET



REVISIONS	
NAME	DATE

ILLINOIS DEPARTMENT OF TRANSPORTATION
 EROSION CONTROL PLANS
 F.A.P. ROUTE 668 (DIRKSEN PARKWAY)
 SECTION 28R-1
 SANGAMON COUNTY

SCALE 1 : 250
 DATE 06/2013

DRAWN BY RK
 CHECKED BY SEW