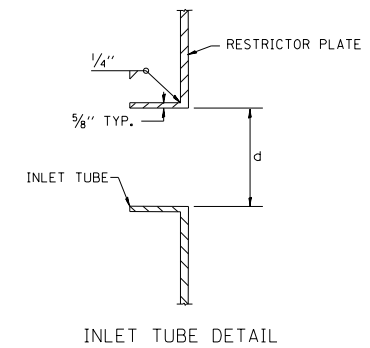
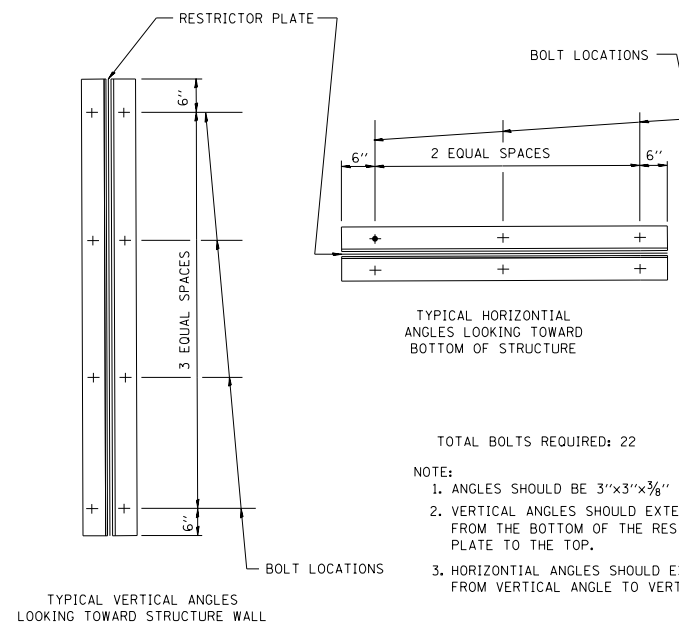


- NOTES:
1. ALL STEEL ANGLES AND PLATES TO BE GALVANIZED AFTER FABRICATION.
 2. ALL RESTRICTOR PLATES, ANGLES AND HARDWARE TO BE INCLUDED IN THE COST OF THE STRUCTURE.



RESTRICTOR STRUCTURE NO.	STATION/OFFSET	STRUCTURE DIAMETER	FRAME AND GRATE	RESTRICTOR TYPE	INSIDE RESTRICTOR TYPE DIAMETER	INVERT OF RESTRICTOR TYPE	ELEVATION OF TOP OF PLATE OVERFLOW
1	STA. 5+925.00; O/S 13.7 LT	2.1 M	CLOSED LID	TYPE 6	300 MM	177.52	178.72
2	STA. 5+925.00; O/S 15.2 RT	2.7 M	CLOSED LID	TYPE 6	250 MM	177.52	178.72
3	STA. 6+172.26; O/S 12.6 LT	1.2 M	CLOSED LID	TYPE 6	150 MM	179.05	179.65
4	STA. 6+200.00; O/S 12.6 LT	1.5 M	CLOSED LID	TYPE 6	175 MM	179.12	179.72
5	STA. 6+187.50; O/S 10.2 RT	1.5 M	CLOSED LID	TYPE 6	200 MM	179.00	179.75
6	STA. 6+172.26; O/S 10.2 RT	1.2 M	CLOSED LID	TYPE 6	150 MM	178.97	179.57

BASIS OF PAYMENT: CONTROL STRUCTURE, RESTRICTOR PLATE WITH THE FRAME AND GRATE AND DIAMETER SPECIFIED.



- TOTAL BOLTS REQUIRED: 22
- NOTE:
1. ANGLES SHOULD BE 3"x3"x3/8"
 2. VERTICAL ANGLES SHOULD EXTEND FROM THE BOTTOM OF THE RESTRICTOR PLATE TO THE TOP.
 3. HORIZONTAL ANGLES SHOULD EXTEND FROM VERTICAL ANGLE TO VERTICAL ANGLE.

RESTRICTOR TYPE					
1	2	3	4	5	6
RE-ENTRANT TUBE	SHARP EDGED	SQUARE EDGED	RE-ENTRANT TUBE	SQUARE EDGED	ROUNDED
LENGTH: 1/2 TO 1 DIA.		STREAM CLEARS SIDES	LENGTH: 2-1/2 DIA.	LENGTH: 2-1/2 DIA.	
C=.52	C=.61	C=.61	C=.73	C=.82	C=.98

VALUES OF "C" FOR CIRCULAR AND SQUARE ORIFICES

ALL DIMENSIONS ARE IN INCHES UNLESS OTHERWISE SHOWN.

ILLINOIS DEPARTMENT OF TRANSPORTATION

CONTROL STRUCTURE WITH RESTRICTOR PLATE

F.A.P. ROUTE 668 (DIRKSEN PARKWAY)
SECTION 28R-1
SANGAMON COUNTY

REVISIONS	
NAME	DATE