

F.A.P. RTE.	SECTION	COUNTY	TOTAL SHEETS	SHEET NO.
668	28R-1	SANGAMON	354	063
STA. 5+375.000 TO STA. 5+530.000				
FED. ROAD DIST. NO.		ILLINOIS FED. AID PROJECT		
CONTRACT NO. 72501				

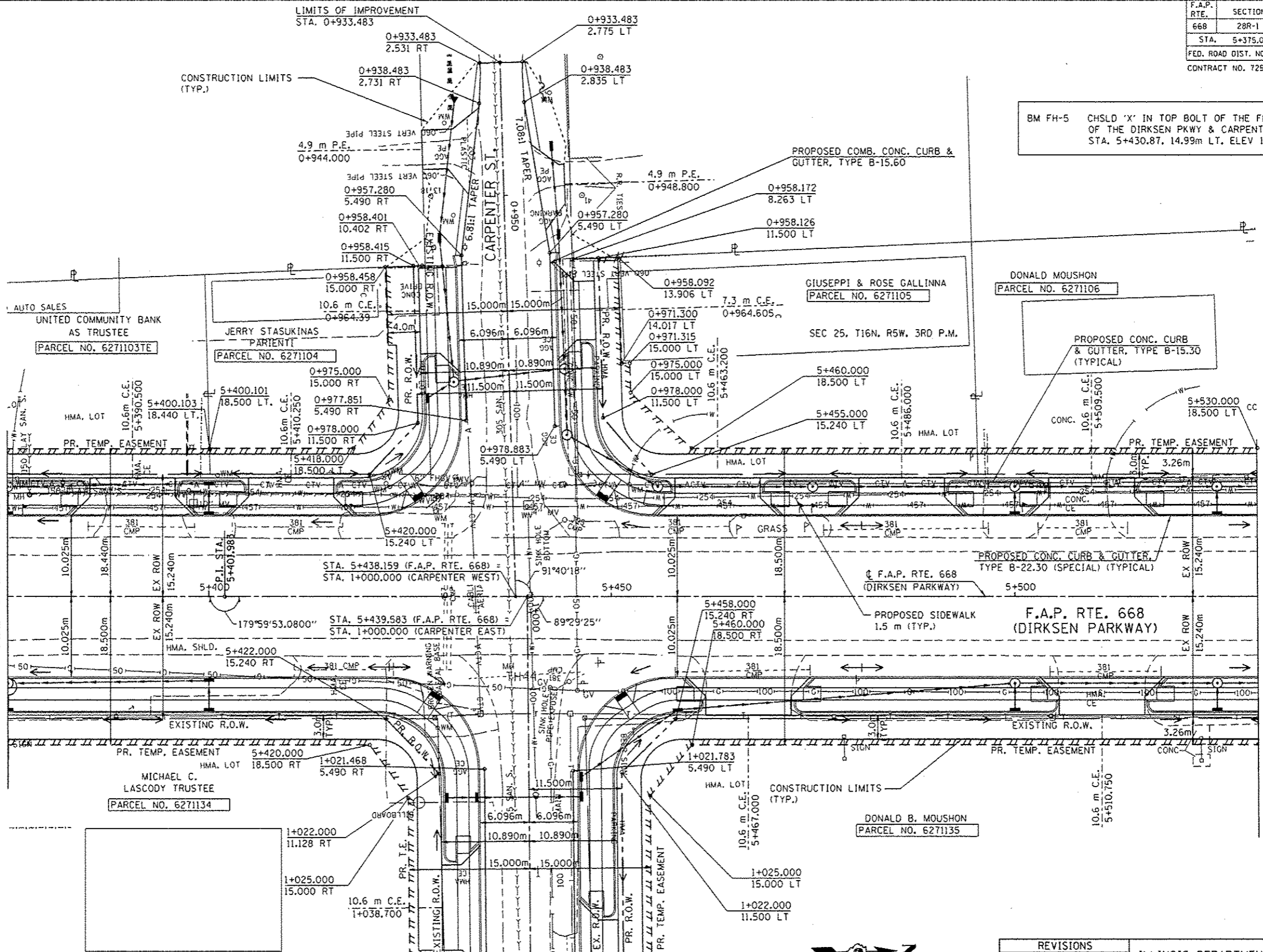
BM FH-5 CHSLD 'X' IN TOP BOLT OF THE FH ON THE SW CORNER OF THE DIRKSEN PKWY & CARPENTER ST. INTERSECTION STA. 5+430.87, 14.99m LT. ELEV 181.670m

MATCH LINE STA. 5+375
SEE SHEET \$PL1

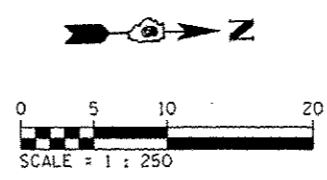
MATCH LINE STA. 5+530
SEE SHEET \$PL3

DATE	BY

NOTE:
SEE DRAINAGE PLANS FOR STATION, OFFSET, AND ELEVATION INFORMATION FOR PROPOSED CURB AND GUTTER SECTIONS BEYOND PROPOSED SIDEWALK. ALL CURB AND GUTTER POINTS ARE CALLED OUT TO THE TOP OF FACE OF CURB.



MATCH LINE STA. 1+045
SEE SHEET \$PL12



REVISIONS	
NAME	DATE

ILLINOIS DEPARTMENT OF TRANSPORTATION
ROADWAY PLANS
F.A.P. ROUTE 668 (DIRKSEN PARKWAY)
SECTION 28R-1
SANGAMON COUNTY

SCALE 1 : 250
DATE 06/2013

DRAWN BY RK
CHECKED BY FML