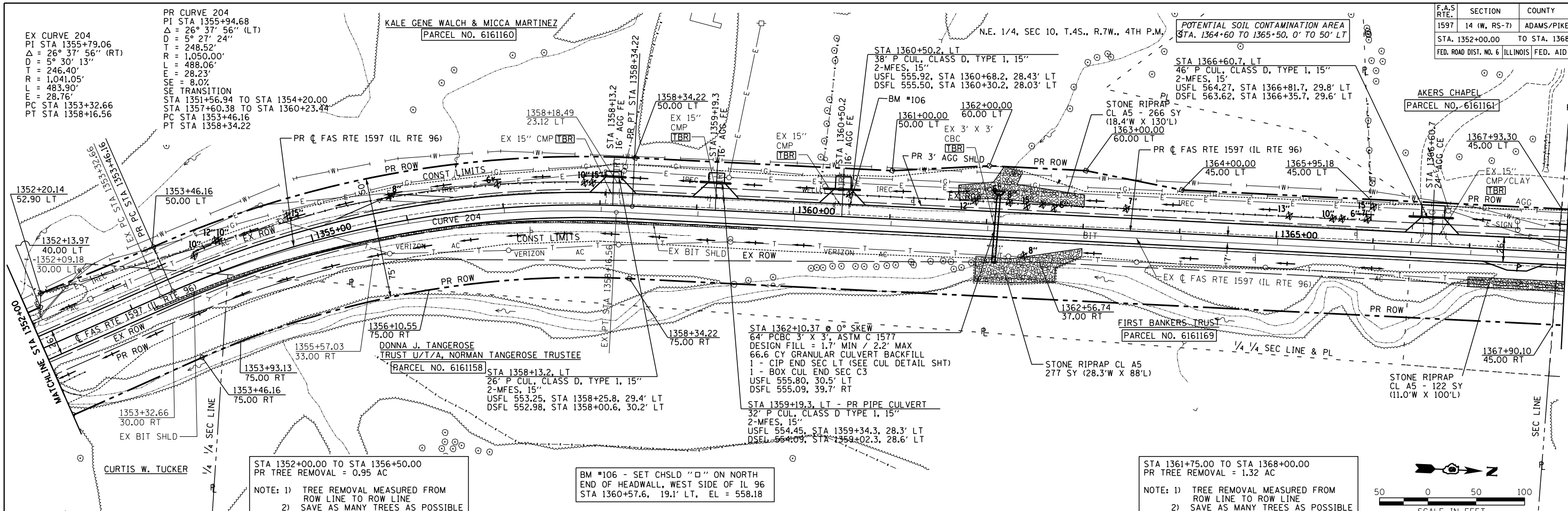


F.A.S. RTE.	SECTION	COUNTY	TOTAL SHEETS	SHEET NO.
1597	14 (W, RS-7)	ADAMS/PIKE	152	34
STA. 1352+00.00 TO STA. 1368+00.00				
FED. ROAD DIST. NO. 6 ILLINOIS FED. AID PROJECT				



STA 1352+00.00 TO STA 1356+50.00
PR TREE REMOVAL = 0.95 AC
NOTE: 1) TREE REMOVAL MEASURED FROM ROW LINE TO ROW LINE
2) SAVE AS MANY TREES AS POSSIBLE

BM #106 - SET CHSLD "O" ON NORTH END OF HEADWALL, WEST SIDE OF IL 96
STA 1360+57.6, 19.1' LT, EL = 558.18

STA 1361+75.00 TO STA 1368+00.00
PR TREE REMOVAL = 1.32 AC
NOTE: 1) TREE REMOVAL MEASURED FROM ROW LINE TO ROW LINE
2) SAVE AS MANY TREES AS POSSIBLE

PLAN	SURVEYED	BY	DATE
	PLOTTED		
	CHECKED		
	BY		
	NO. OF WAY CHECKED		
	NOTE BOOK NO.		
	STRUCTURE NOTATIONS CHKD		
	NO.		

PROFILE	SURVEYED	BY	DATE
	PLOTTED		
	CHECKED		
	BY		
	NO. OF WAY CHECKED		
	NOTE BOOK NO.		
	STRUCTURE NOTATIONS CHKD		
	NO.		

