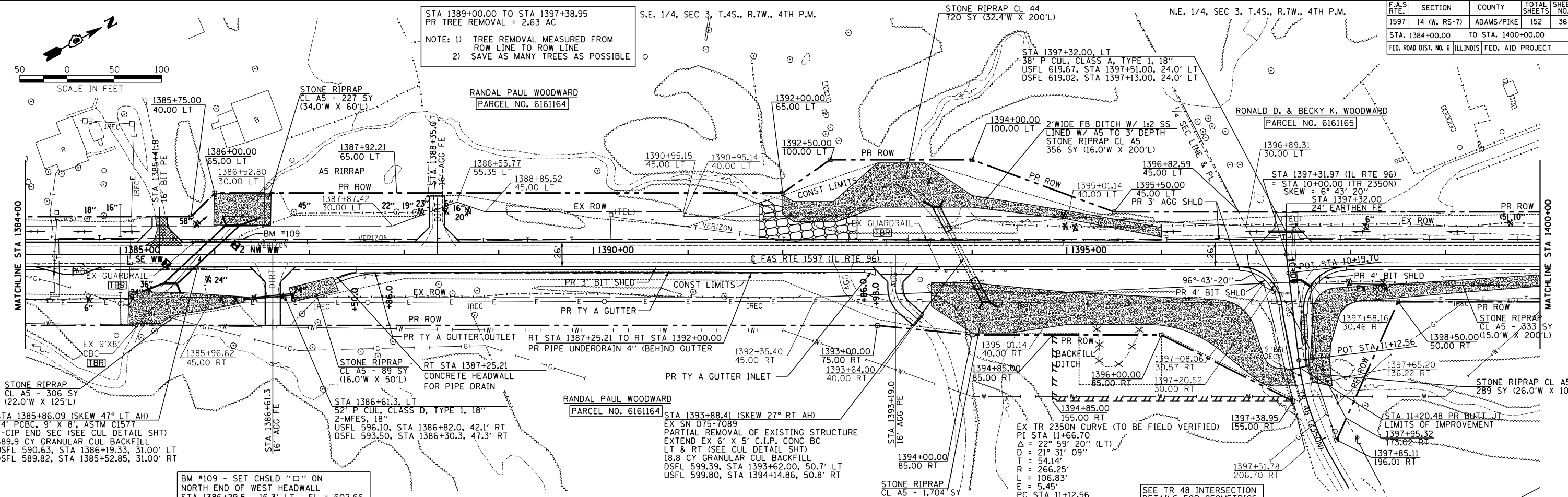


F.A.S. RTE.	SECTION	COUNTY	TOTAL SHEETS	SHEET NO.
1597	14 (W, RS-7)	ADAMS/PIKE	152	36
STA. 1384+00.00 TO STA. 1400+00.00				
FED. ROAD DIST. NO. 6 (ILLINOIS) FED. AID PROJECT				

S.E. 1/4, SEC 3, T.4S., R.7W., 4TH P.M.

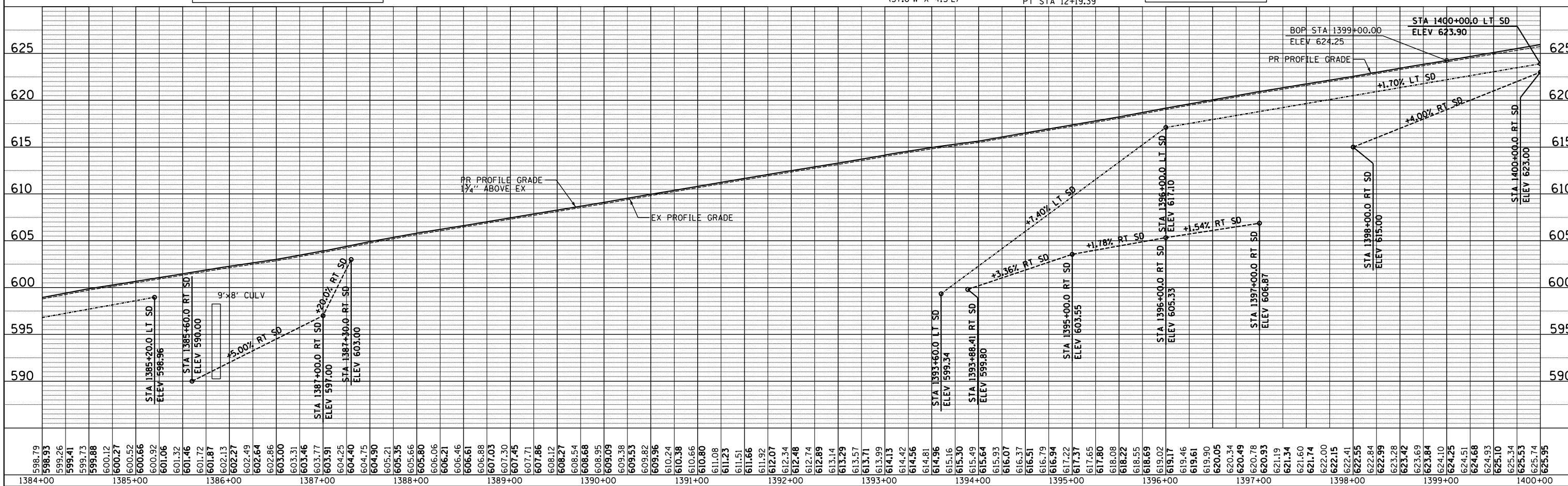
N.E. 1/4, SEC 3, T.4S., R.7W., 4TH P.M.

STA 1389+00.00 TO STA 1397+38.95
PR TREE REMOVAL = 2.63 AC
NOTE: 1) TREE REMOVAL MEASURED FROM ROW LINE TO ROW LINE
2) SAVE AS MANY TREES AS POSSIBLE



DATE	BY	REVISION

DATE	BY	REVISION



SEE TR 48 INTERSECTION
DETAILS FOR GEOMETRICS