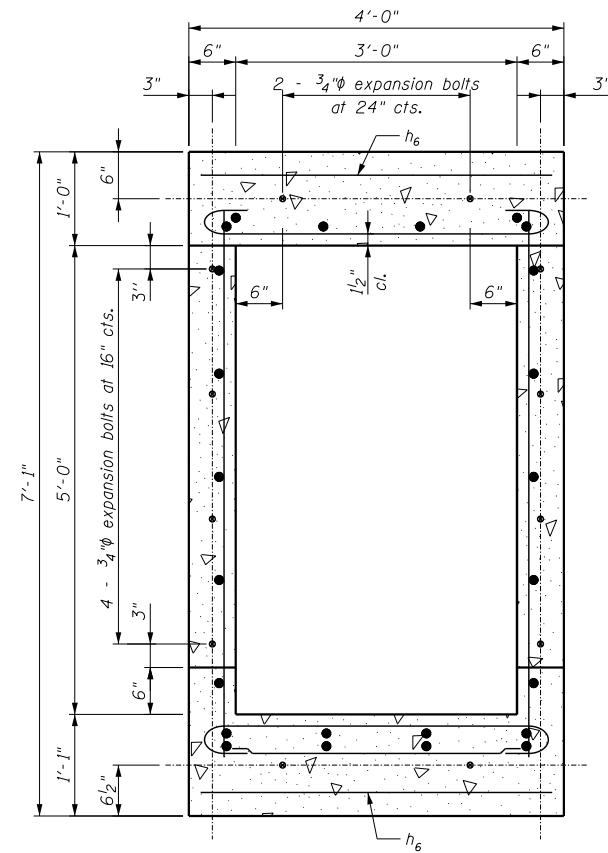
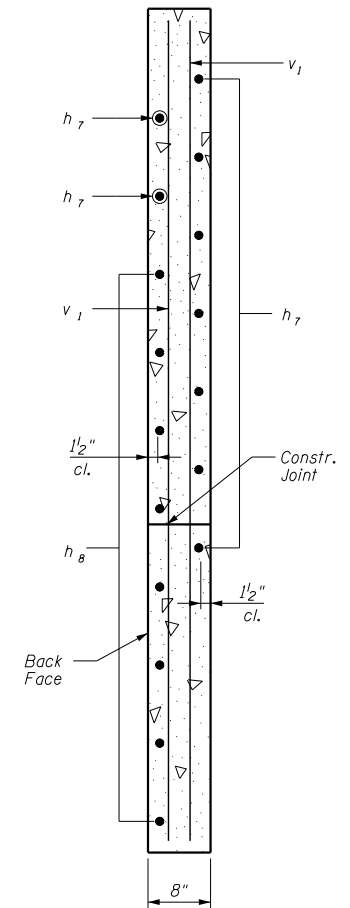


SECTION THRU BARREL



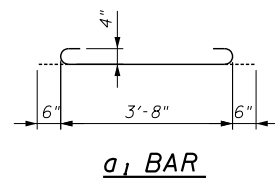
SECTION B-B

Expansion Bolt Locations
Section Shown Without Skew

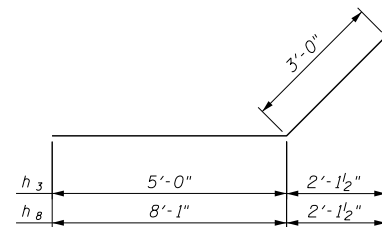


SECTION A-A

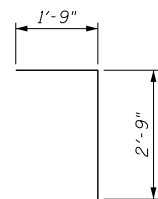
Wing Wall



a₁ BAR



h BARS

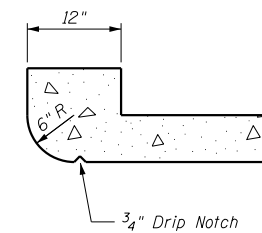


d BAR

BAR BEND DETAILS

BILL OF MATERIAL

Bar	No.	Size	Length	Shape
a ₁	30	5	4'-8"	
a ₂	7	4	3'-4"	
d	8	4	4'-6"	
h	6	5	10'-7"	
h ₁	8	4	10'-7"	
h ₂	10	5	10'-7"	
h ₃	18	6	8'-0"	
h ₄	12	6	3'-9"	
h ₈	16	6	11'-1"	
v	56	4	5'-9"	
v ₁	16	4	8'-9"	
3/4" Expansion Bolts			Each	12
Concrete Box Culverts			Cu. Yd.	7.2
Reinforcement Bars			Pound	1290
Granular Culvert Backfill			Cu Yd	63.0



SECTION THRU HEADWALL

(UPSTREAM END ONLY)

FILE NAME = culvert1345+7189 CIP-WEST-EXT.dgn

USER NAME = notel
 DRAWN - PSBA
 CHECKED - CSB
 PLOT SCALE = 4:1.1369 1/4" = 1"
 PLOT DATE = 8/16/2013

DESIGNED - TCD
 DRAWN - PSBA
 CHECKED - CSB
 DATE - 07/2013

REVISED -
 REVISED -
 REVISED -
 REVISED -

**STATE OF ILLINOIS
 DEPARTMENT OF TRANSPORTATION**

**CULVERT DETAILS
 CULVERT EXTENSION: STA 1345 + 71.89, LT**

SCALE: NTS SHEET 2 OF 2 SHEETS STA. TO STA.

F.A.S. RTE.	SECTION	COUNTY	TOTAL SHEETS	SHEET NO.
1597	14 (W, RS-7)	ADAMS/PIKE	152	56
				72781

ILLINOIS FED. AID PROJECT