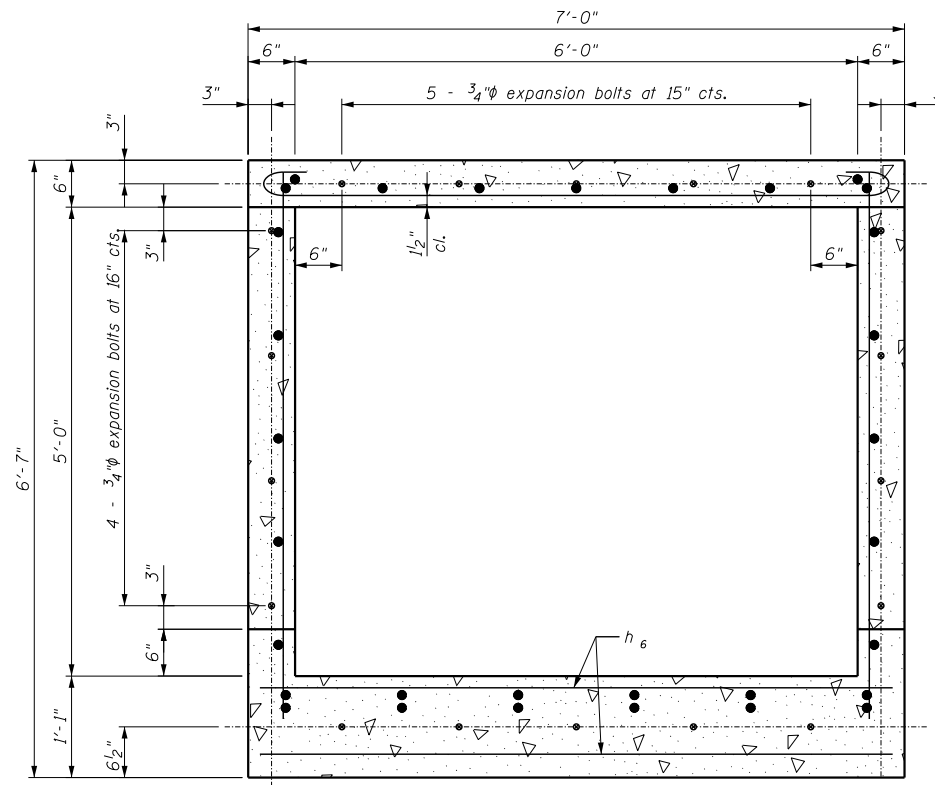
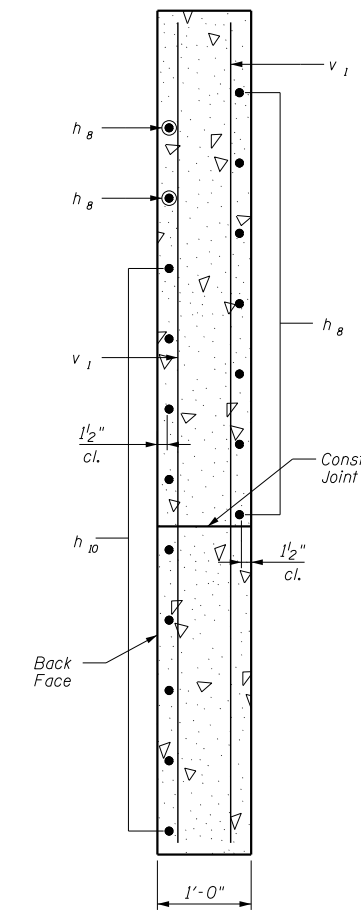


SECTION THRU BARREL

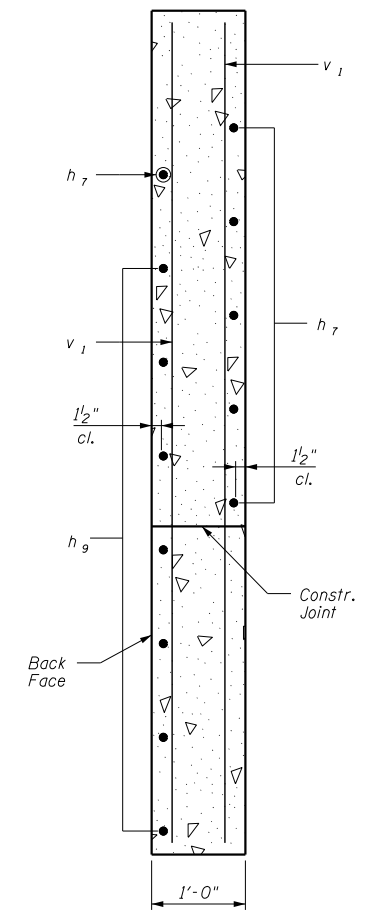


SECTION C-C

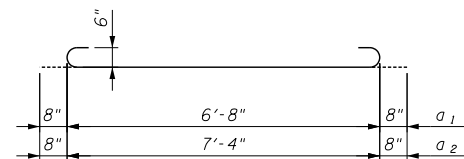
Expansion Bolt Locations
Section Shown Without Skew



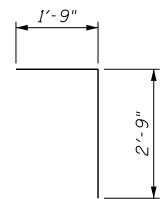
SECTION A-A
Long Wing Wall



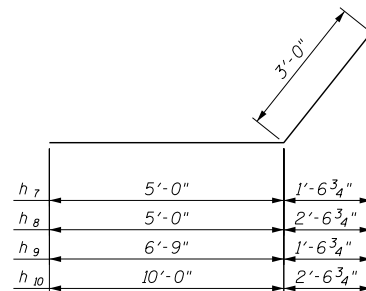
SECTION B-B
Short Wing Wall



a BARS



d BAR



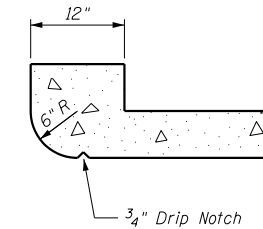
h BARS

BAR BEND DETAILS

BILL OF MATERIAL

Bar	No.	Size	Length	Shape
a ₁	126	6	8'-0"	
a ₂	50	6	8'-8"	
a ₃	18	4	6'-6"	
a ₄	8	4	7'-2"	
d	14	4	4'-6"	
* h	9	5	30'-10"	
* h ₁	9	5	30'-5"	
h ₂	12	4	25'-2"	
h ₃	12	4	26'-1"	
h ₄	10	5	25'-2"	
h ₅	10	5	26'-1"	
h ₆	20	6	7'-7"	
h ₇	12	4	8'-0"	
h ₈	18	6	8'-0"	
h ₉	14	4	9'-9"	
h ₁₀	18	6	13'-0"	
v	142	4	5'-9"	
v ₁	16	4	8'-9"	
3/4" Expansion Bolts			Each	18
Concrete Box Culverts			Cu. Yd.	38.5
Reinforcement Bars			Pound	5,450
Granular Culvert Backfill			Cu. Yd.	18.8

*Cut to fit in field.



SECTION THRU HEADWALL
(UPSTREAM END ONLY)

DESIGN STRESSES

F_y = 60,000 psi
F'_c = 3,500 psi

LOADING HS 20-44 & ALT.

FILE NAME =
culvert1393+8841.dgn

USER NAME = nate1

PLOT SCALE = 4:1.1369 1/4" = 1'-0"

PLOT DATE = 8/16/2013

DESIGNED - TCD

DRAWN - PSBA

CHECKED - CSB

DATE - 07/2013

REVISED -

REVISED -

REVISED -

REVISED -

STATE OF ILLINOIS
DEPARTMENT OF TRANSPORTATION

CULVERT DETAILS
CULVERT EXTENSION: STA 1393+88.41, LT & RT

SCALE: NTS SHEET 3 OF 3 SHEETS STA. TO STA.

F.A.S. SECTION COUNTY TOTAL SHEETS SHEET NO.

1597 14 (W, RS-7) ADAMS/PIKE 152 63

CONTRACT NO. 72781

ILLINOIS FED. AID PROJECT