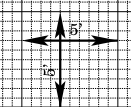
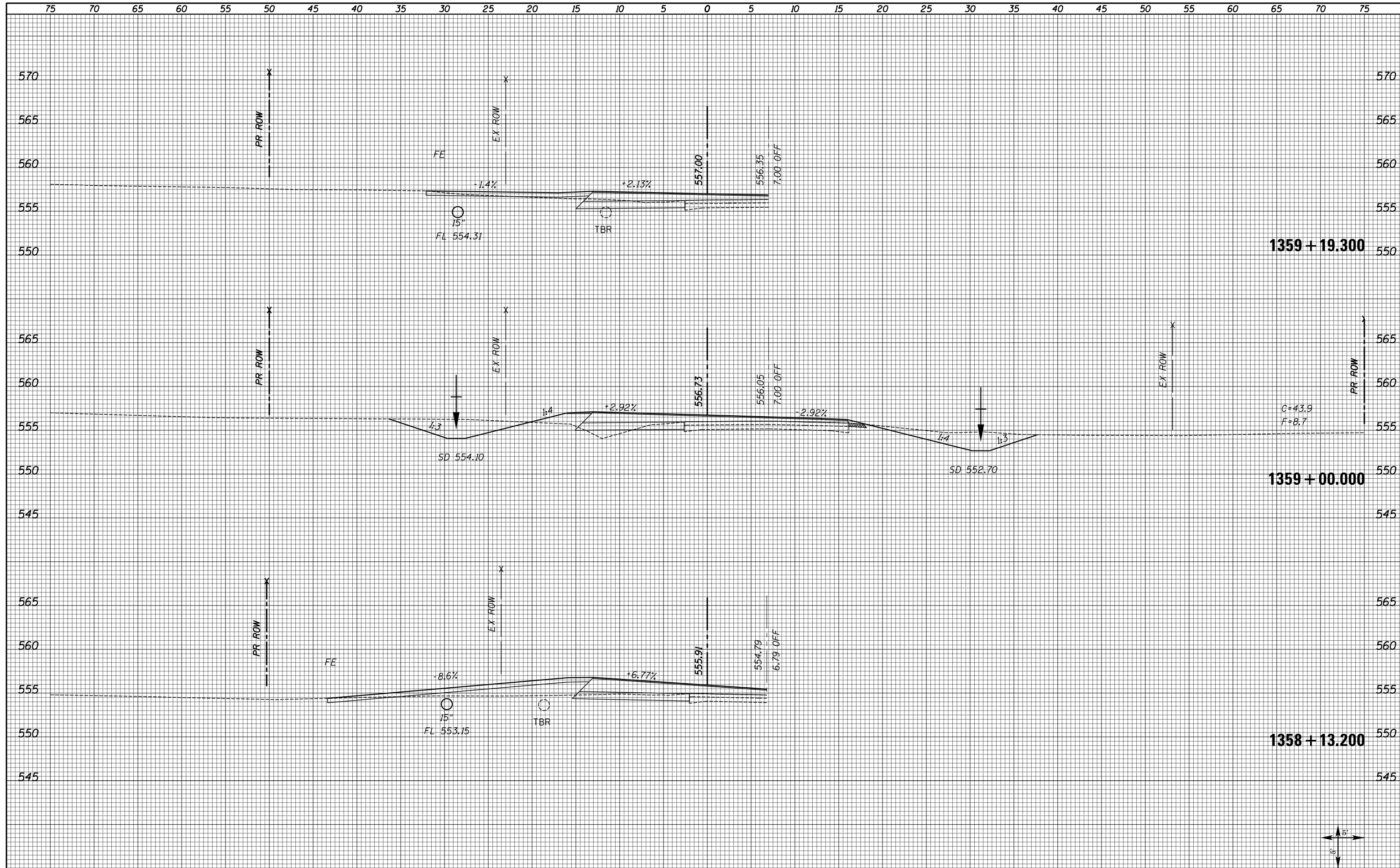


DATE	
BY	
FINAL SURVEY	SURVEYED
NOTE BOOK	PLOTTED
NO.	TEMPLATE
	AREAS
	CHECKED

DATE	
BY	
ORIGINAL SURVEY	SURVEYED
NOTE BOOK	PLOTTED
NO.	TEMPLATE
	AREAS
	CHECKED



FILE NAME = XS_SHEETS-NEW.dgn	USER NAME = notel	DESIGNED -	REVISÉ -	STATE OF ILLINOIS DEPARTMENT OF TRANSPORTATION	FAS 1597 (IL 96) CROSS SECTIONS		F.A.S. RTE. 1597	SECTION 14 (W, RS-7)	COUNTY ADAMS/PIKE	TOTAL SHEETS 152	SHEET NO. 104	
	PLOT SCALE = 10.0000' / 1"	DRAWN -	REVISÉ -		SCALE: SHOWN	SHEET NO. 29 OF 72 SHEETS	STA. 1358+13.200	STA. 1359+19.300	CONTRACT NO. 72781			
	PLOT DATE = 8/16/2013	CHECKED -	REVISÉ -		ILLINOIS FED. AID PROJECT							
		DATE -	REVISÉ -									